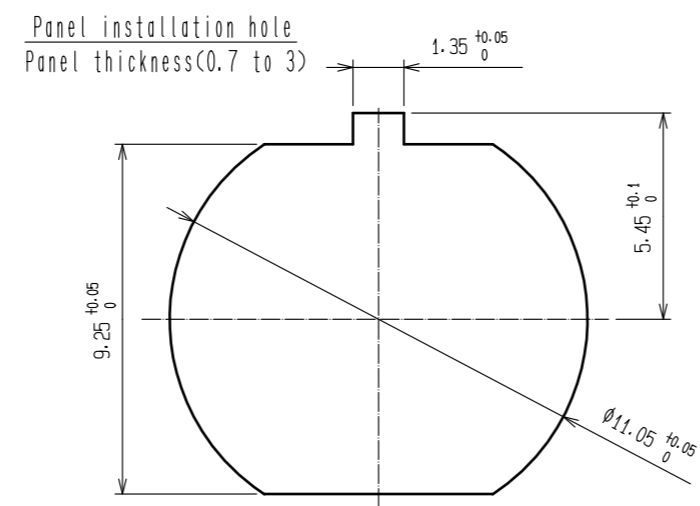
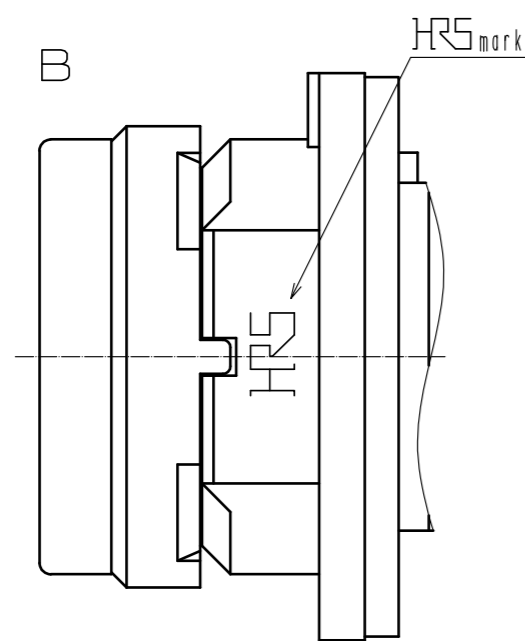
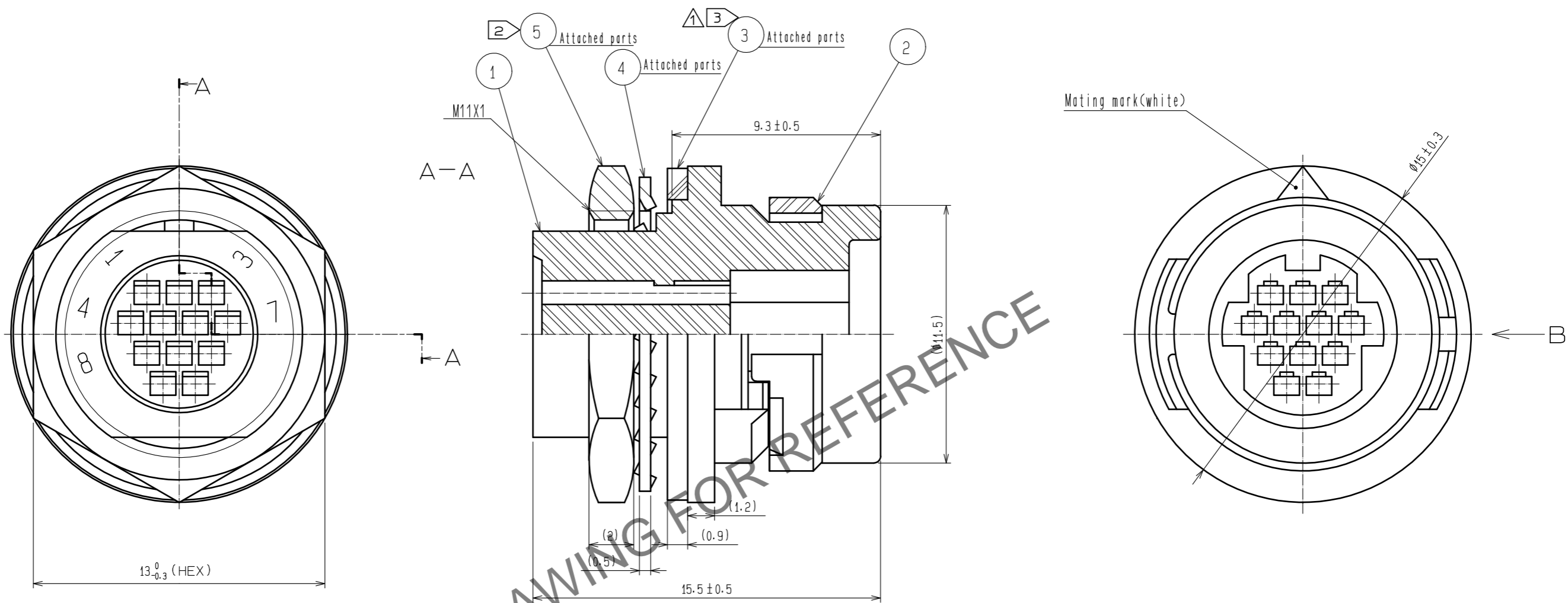


Apr.1.2024 Copyright 2024 HIROSE ELECTRIC CO., LTD. All Rights Reserved.
 In case of consideration for using Automotive equipment / device which demand high reliability, kindly contact our sales window correspondents.



HRS DRAWING FOR REFERENCE

- Notes 1 Applicable crimping contact:HR30-PC-211
 (Applicable wire: 26 to 30 AWG wire jacket diameter:φ1 max)
 Applicable crimp contact extraction tool:HR30-TP
- ② The recommended clamp torque of Ref. No. ⑤ to be 0.8N·m.
 LOCTITE 263, LOCPRIMER 7649, ROCTITE JAPAN is recommended to prevent Ref. No. ⑤ from loosening.
- ⚠③ When this connector is mounted on to panel, be careful Ref. No. ③ is assembled surely
 Ref. No. ① as shown in this figure to keep waterproof effectiveness.
- ⚠ 4 The assembly of this product applies to the manual ETAD-C0302-00.

NO.	MATERIAL	FINISH .	REMARKS	NO.	MATERIAL	FINISH .	REMARKS
3	CR	(Black)					
2	PPS	(Black)	UL94V-0	5	Brass	Nickel plating	
1	PPS	(Black)	UL94V-0	4	Phosphor bronze	Nickel plating	

UNITS	SCALE	COUNT	DESCRIPTION OF REVISIONS	DESIGNED	CHECKED	DATE
mm	5 : 1	3	DIS-C-00014887	HY. KISHI	HY. KOBAYASHI	20230328

APPROVED	20180312	DRAWING NO.	EDC-112155-31-00
HY. KOBAYASHI		PART NO.	HR30-7R-12PC(31)
HY. KOBAYASHI		CODE NO.	CL0130-1013-8-31
DS. MATSUNE			
DS. MATSUNE			