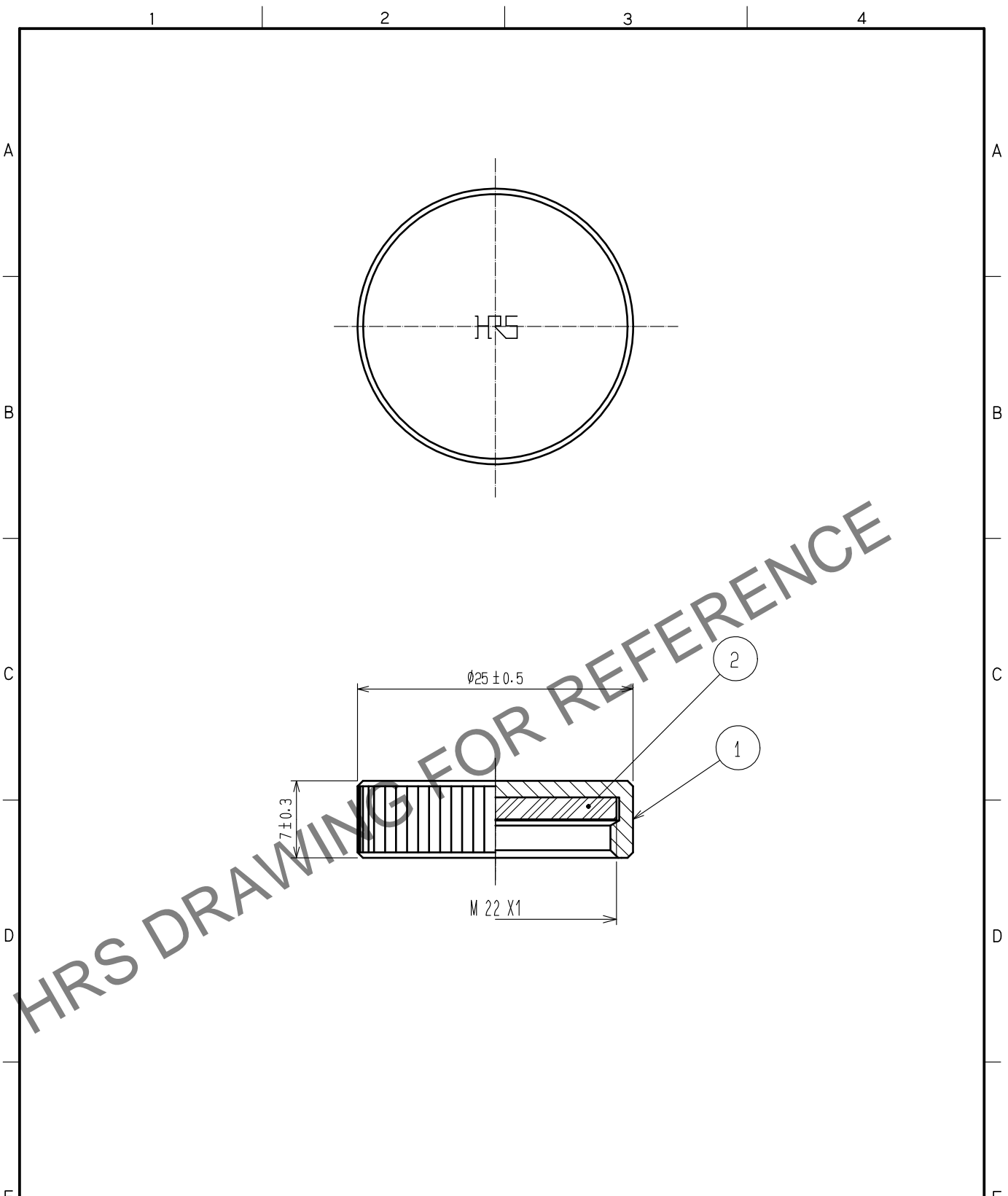


Apr.1.2024 Copyright 2024 HIROSE ELECTRIC CO., LTD. All Rights Reserved.
 In case of consideration for using Automotive equipment / device which demand high reliability, kindly contact our sales window correspondents.



HRS DRAWING FOR REFERENCE

NOTE 1 THIS PRODUCT IS A CAP FOR JR※16WR※-※(※).
 IT IS APPLICABLE REGARDLESS OF GIVEN ALPHABETS AND/OR NUMBERS SHOWN AT ※.

1	BRASS	BLACK CHROME PLATING	2	CHLORPRENE RUBBER (BLACK)	
NO.	MATERIAL	FINISH . REMARKS	NO.	MATERIAL	FINISH . REMARKS
UNITS mm		SCALE 2 : 1	COUNT 	DESCRIPTION OF REVISIONS	DESIGNED
					CHECKED
					DATE
HRS HIROSE ELECTRIC CO., LTD.	APPROVED	HY. KOBAYASHI	18. 02. 26	DRAWING NO.	EDC-113026-31-00
	CHECKED	HY. KOBAYASHI	18. 02. 26	PART NO.	JR16WRC(31)
	DESIGNED	TH. KAMEYA	18. 02. 24	CODE NO.	CL114-2162-4-31
	DRAWN	MK. INOUE	18. 02. 14		