

## EL LED ENCLOSURE LIGHTS OVERVIEW



The EL LED Enclosure Lights have integrated a quick-install feature which can be fitted anywhere in the 25 mm hole pattern of the nVent HOFFMAN enclosure profiles. The lights are easy to install which reduces assembly time and may be fastened to the enclosure with screws or magnets.

All connections to the LED lights are designed to make connecting fast and easy. The infeed, through wiring, and door switch connections are a plug-and-play system.

There are many different versions available. The version with an integrated motion detector eliminates the need for installing an external door switch. Versions with integrated sockets allow for connecting additional devices whenever needed for maintenance.

The LED lights can be used in all nVent HOFFMAN enclosures and are available for operating voltages of 110-115VAC, 50/60Hz and 24 VDC with several different lumens.

## EL LED ENCLOSURE LIGHT WITH SOCKET AND MOTION SENSOR



### INDUSTRY STANDARDS

UL 1598 Listed; File No. E514459  
 cUL Listed per CSA C22.2 NO. 250.0-18; File No. E514459

IP20

### FEATURES

- With integrated socket and motion detector
- Fast and tool-free assembly designed with a latching hook system to fit the 25 mm (.98) hole pattern on nVent HOFFMAN enclosures
- The Light may be installed horizontally or vertically
- Mounting accessories are required and must purchase separately when the light is not installed in the 25 mm (.98) hole pattern
- Purchase infeed cable or connectors separately to supply power to the light

Catalog Number	Height in./mm	Width in./mm	Depth in./mm	Socket Type	Lamp Type	Luminosity (lm)	Light Color Temp. (K)	Light Color	Power (W)	Voltage (VAC)	Hertz (Hz)	Connection	Operating Temp. (°F)	Operating Temp. (°C)	Sensor On Time (s)
EL1200MS-US	2.99 76	14.33 364	1.89 48	Socket B	LED	1200	4000	Neutral White	12	100-125	50/60	3-Pole Infeed and Through Wiring	-4 to 131	-20 to +55	180

**EL LED ENCLOSURE LIGHT WITH SOCKET**



**INDUSTRY STANDARDS**

UL 1598 Listed; File No. E514459  
 cUL Listed per CSA C22.2 NO. 250.0-18; File No. E514459

IP20

**FEATURES**

- With integrated socket and door-operated switch connection
- Fast and tool-free assembly designed with a latching hook system to fit the 25mm (.98) hole pattern on nVent HOFFMAN enclosures
- The Light may be installed horizontally or vertically
- Mounting accessories are required and must purchase separately when the light is not installed in the 25mm (.98) hole pattern
- Purchase infeed cable or connectors separately to supply power to the light

Catalog Number	Height in./mm	Width in./mm	Depth in./mm	Socket Type	Lamp Type	Luminosity (lm)	Light Color Temp. (K)	Light Color	Power (W)	Voltage (VAC)	Hertz (Hz)	Connection	Operating Temp. (°F)	Operating Temp. (°C)
EL900DS-US	2.99 76	14.33 364	1.89 48	Socket B	LED	900	4000	Neutral White	9	100-125	50/60	3-Pole Infeed and Through Wiring	-4 to 131	-20 to +55
EL1200DS-US	2.99 76	14.33 364	1.89 48	Socket B	LED	1200	4000	Neutral White	12	100-125	50/60	3-Pole Infeed and Through Wiring	-4 to 131	-20 to +55

**EL LED ENCLOSURE LIGHT WITH MOTION SENSOR**



**INDUSTRY STANDARDS**

VAC Version:

UL 1598 Listed; File No. E514459  
 cUL Listed per CSA C22.2 NO. 250.0-18; File No. E514459

CE/ENEC  
 IP20

VDC Version:

UL 2108 Listed; File No. E516511  
 cUL Listed per CSA C22.2 NO. 9.0-96,; File No. E516511

CE  
 IP20

**FEATURES**

- With motion sensor
- Fast and tool-free assembly designed with a latching hook system to fit the 25mm (.98) hole pattern on nVent HOFFMAN enclosures
- The Light may be installed horizontally or vertically
- Mounting accessories are required and must purchase separately when the light is not installed in the 25 mm (.98) hole pattern
- Purchase infeed cable or connectors separately to supply power to the light

Catalog Number	Height in./mm	Width in./mm	Depth in./mm	Lamp Type	Luminosity (lm)	Light Color Temp. (K)	Light Color	Power (W)	Voltage (VAC)	Voltage (VDC)	Hertz (Hz)	Connection	Operating Temp. (°F)	Operating Temp. (°C)	Sensor On Time (s)
EL1200M	2.99 76	12.40 315	1.89 48	LED	1200	4000	Neutral White	12	100-240	—	50/60	3-Pole Infeed and Through Wiring	-4 to 131	-20 to +55	180
EL1200M24V	2.99 76	12.40 315	1.89 48	LED	1200	4000	Neutral White	10	—	24	—	2-Pole Infeed and Through Wiring	-4 to 131	-20 to +55	180

**EL LED ENCLOSURE LIGHT**

**INDUSTRY STANDARDS**

VAC Version:

 UL 1598 Listed; File No. E514459  
 cUL Listed per CSA C22.2 NO. 250.0-18; File No. E514459

 CE/ENEC  
 IP20

VDC Version:

 UL 2108 Listed; File No. E516511  
 cUL Listed per CSA C22.2 NO. 9.0-96,; File No. E516511

 CE  
 IP20

**FEATURES**

- With door-operated switch connection
- Fast and tool-free assembly designed with a latching hook system to fit the 25mm hole pattern on nVent HOFFMAN enclosures
- The Light may be installed horizontally or vertically
- Mounting accessories are required and must purchase separately when the light is not installed in the 25 mm (.98) hole pattern
- Purchase infeed cable or connectors separately to supply power to the light

Catalog Number	Height in./mm	Width in./mm	Depth in./mm	Lamp Type	Luminosity (lm)	Light Color Temp. (K)	Light Color	Power (W)	Voltage (VAC)	Voltage (VDC)	Hertz (Hz)	Connection	Operating Temp. (°F)	Operating Temp. (°C)
EL900D	2.99 76	12.40 315	1.89 48	LED	900	4000	Neutral White	9	100-240	–	50/60	3-Pole Infeed and Through Wiring	-4 to 131	-20 to +55
EL1200D24V	2.99 76	12.40 315	1.89 48	LED	1200	4000	Neutral White	10	–	24	–	2-Pole Infeed and Through Wiring	-4 to 131	-20 to +55

**DOOR-OPERATED SWITCH FOR EL LED ENCLOSURE LIGHTS**

**FEATURES**

- Door switch is used with LED enclosure lights that do not have a motion detector
- Delivered with a 31.50 inch (800mm) door switch cable to connect directly to the EL LED Enclosure light
- Mount on the inside hole pattern of the IEC floor-standing enclosure frame only. Not compatible with ProLine enclosure frame or other enclosures.

Catalog Number	Height in./mm	Width in./mm	Depth in./mm
ELD0801U	2.48 63	1.22 31	1.22 31

### CABLE, DOOR SWITCH FOR EL LED ENCLOSURE LIGHTS

#### FEATURES

- Pre-fabricated cables for LED enclosure lights
- Cables provide time saving, easy mounting of the EL LED Enclosure Lights



Catalog Number	Description	Length (ft.)	Length (m)	Connection	Color	Quantity
ELC3001DU	Door switch cable, 3.0m, UL	9.84	3.0	TPS-cable for doorswitch, UL version	Black	1

### CONNECTORS FOR EL LED ENCLOSURE LIGHTS

#### APPLICATION

The Connectors for EL LED Enclosure Light provide a flexible solution for customers to connect the enclosure light using their own cables, which can be cut to size. These connectors can be used to connect the enclosure light to a power source or to another enclosure light.

#### FEATURES

- With screw connection strain relief
- Terminals are self-locking and need to be unlocked by tool
- 1 input connector and 1 output connector are included



Catalog Number	Description	Height in./mm	Width in./mm	Depth in./mm	Cable Diameter Range in./mm	Rated Current (A)	Rated Voltage (V)	Material	Color	Quantity
ELCN1	Connectors for EL LED Enclosure Light, AC, input and output	2.09 53	0.90 23	0.55 14	.22-.35 5.5-9.0	16	250	Polyamide	Black	2
ELCN124V	Connectors for EL LED Enclosure Light, DC, input and output	2.09 53	0.90 23	0.55 14	.24-.30 6.0-7.7	16	50	Polyamide	Light Blue	2

## CABLE, THROUGH-WIRING FOR EL LED ENCLOSURE LIGHTS



### FEATURES

- Pre-fabricated cables for LED enclosure lights
- Cables provide time saving, easy mounting of the EL LED Enclosure Lights

Catalog Number	Description	Length (ft.)	Length (m)	Rated Current (A)	Rated Voltage (V)	Voltage (VAC)	Voltage (VDC)	Connection	Color	Quantity
ELC0601TBUL	Through-Wiring cable Black, 0.6m, UL	1.97	0.6	10	250	100-240	–	Through Wiring, 3-Pole	Black	1
ELC0601TG24V	Through-Wiring cable Grey, 0.6m, 24V	1.97	0.6	10	50	–	24	Through Wiring, 2-Pole	Gray	1
ELC1001TBUL	Through-Wiring cable Black, 1.0m, UL	3.28	1.0	10	250	100-240	–	Through Wiring, 3-Pole	Black	1
ELC1001TG24V	Through-Wiring cable Grey, 1.0m, 24V	3.28	1.0	10	50	–	24	Through Wiring, 2-Pole	Gray	1

## CABLE, POWER FOR EL LED ENCLOSURE LIGHTS

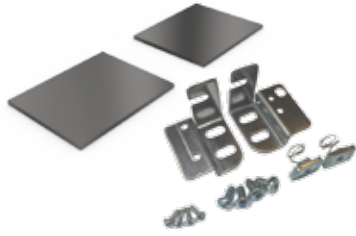


### FEATURES

- Pre-fabricated cables for LED enclosure lights
- Cables provide time saving, easy mounting of the EL LED Enclosure Lights

Catalog Number	Description	Length (ft.)	Length (m)	Rated Current (A)	Rated Voltage (V)	Voltage (VAC)	Voltage (VDC)	Connection	Color	Quantity
ELC1001PBUL	Power cable female Black, 1.0m, UL	3.28	1.0	10	250	100-240	–	Power Cable, 3-Pole	Black	1
ELC1001PG24V	Power cable female Grey, 1.0m, 24V	3.28	1.0	10	50	–	24	Power Cable, 2-Pole	Gray	1
ELC2001PBUL	Power cable female Black, 2.0m, UL	6.56	2.0	10	250	100-240	–	Power Cable, 3-Pole	Black	1
ELC2001PG24V	Power cable female Grey, 2.0m, 24V	6.56	2.0	10	50	–	24	Power Cable, 2-Pole	Gray	1

**MOUNTING ACCESSORIES FOR EL LED ENCLOSURE LIGHTS**

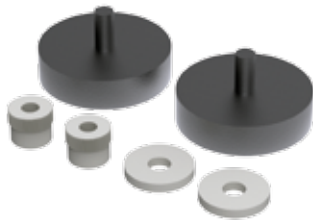


**FEATURES**

- Alternative mounting of LED enclosure lights
- Magnets for magnetic mounting or screws for fastener mounting

Catalog Number	Mounting Type	Quantity
ELA02MF	Magnet	2
ELA02SF	Screw	2

**HEAVY DUTY MAGNETIC MOUNTING KIT FOR EL LED LIGHTS**



**APPLICATION**

Heavy Duty Magnetic Mounting Kit can be used to attach any device or component to flat steel surface. Each kit comes with 2 magnets with 55 lbs. minimum holding force on each side. Furnished with two #10-32 nylon thumb nuts and two flat washers to mount to any mounting brackets.

**FEATURES**

- Neodymium magnet with strong holding force
- Purchase screw mounting brackets separately
- Two magnets, 2 nylon thumb nuts, and 2 flat washers are included

Catalog Number	Diameter		Thread Length
	in./mm	Thread	in./mm
LEDMAG	1.26	10-32	0.38
	32		9.5