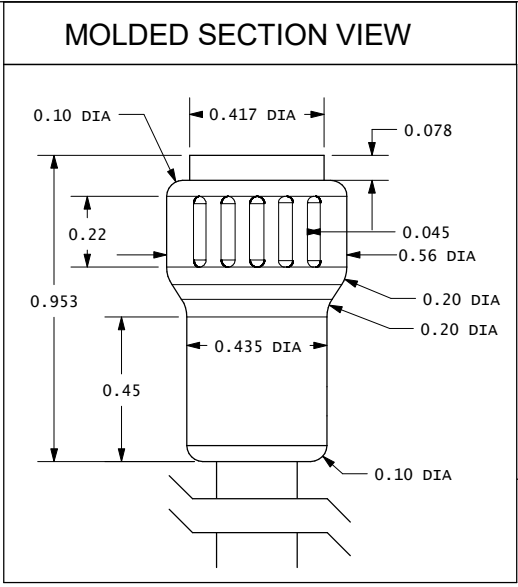
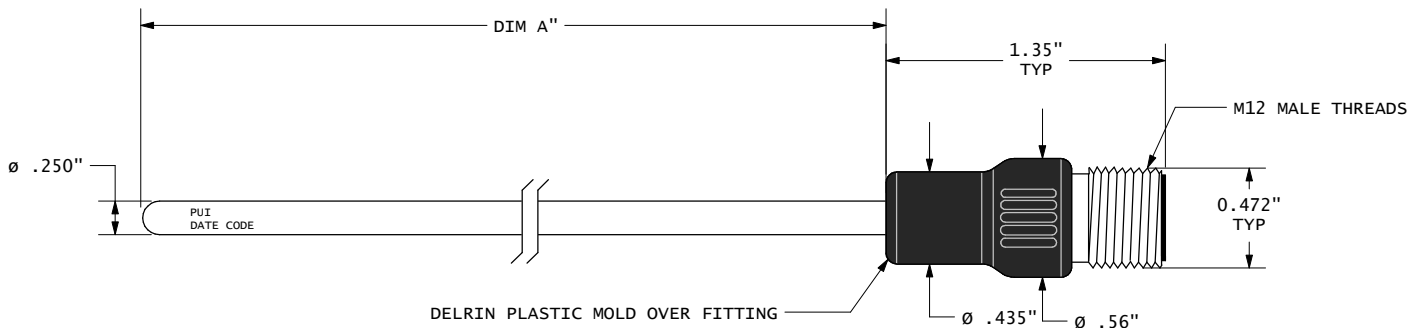


TABLE 1				TABLE 2					
PUI ITEM #	DIM A	TOLERANCE	CUSTOMER ITEM#	DWG REV	ECO NUMBER	REV BY	DATE	DESCRIPTION	
P100-21040106	6	CLASS B, ± .12% [-50°C TO +500°C]	TBD	X1	21040101	PSM	04/01/21	INITIAL DRAWING	
P100-21040112	12	CLASS B, ± .12% [-50°C TO +500°C]	TBD	X2	21051701	PSM	05/17/21	ADDED ANOTHER PART FOR CLASS 1/3B SENSOR	
P100-21040212	12	CLASS 1/3B, ± .04% [0°C TO +150°C]	TBD	X3	21072901	PSM	07/29/21	REV TO ADD NOTES AND PRODUCT PHOTO	

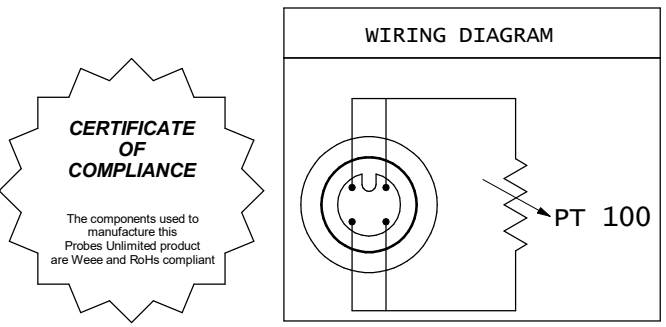
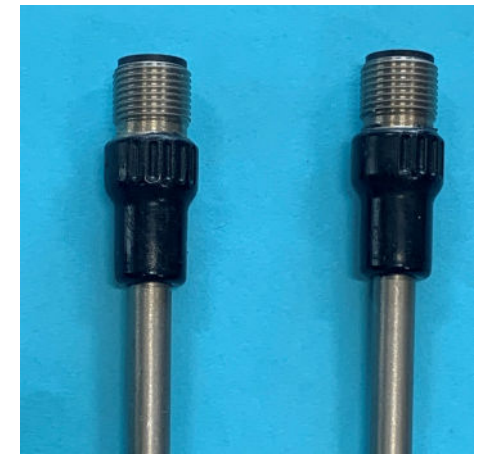


**PRELIMINARY DRAWING**

THIS DRAWING IS NOT FOR PRODUCTION USE OR SUBSTITUTION  
FOR ANY PART UNTIL FORMAL APPROVAL AND RELEASE.

°C	OHMS	°C	OHMS	°C	OHMS
0	100.00	36	114.00	72	127.84
1	100.39	37	114.38	73	128.22
2	100.78	38	114.77	74	128.61
3	101.17	39	115.15	75	128.99
4	101.56	40	115.54	76	129.37
5	101.95	41	115.93	77	129.75
6	102.34	42	116.31	78	130.13
7	102.73	43	116.70	79	130.52
8	103.12	44	117.08	80	130.90
9	103.51	45	117.47	81	131.28
10	103.90	46	117.86	82	131.66
11	104.29	47	118.24	83	132.04
12	104.68	48	118.63	84	132.42
13	105.07	49	119.01	85	132.80
14	105.46	50	119.40	86	133.18
15	105.85	51	119.78	87	133.57
16	106.24	52	120.17	88	133.95
17	106.63	53	120.55	89	134.33
18	107.02	54	120.94	90	134.71
19	107.40	55	121.32	91	135.09
20	107.79	56	121.71	92	135.47
21	108.18	57	122.09	93	135.85
22	108.57	58	122.47	94	136.23
23	108.96	59	122.86	95	136.61
24	109.35	60	123.24	96	136.99
25	109.73	61	123.63	97	137.37
26	110.12	62	124.01	98	137.75
27	110.51	63	124.39	99	138.13
28	110.90	64	124.78	100	138.51
29	111.29	65	125.16	101	138.88
30	111.67	66	125.54	102	139.26
31	112.06	67	125.93	103	139.64
32	112.45	68	126.31	104	140.02
33	112.83	69	126.69	105	140.40
34	113.22	70	127.08	106	140.78
35	113.61	71	127.46	107	141.16

- NOTES:
- 1) SENSOR: PT100, .00385 ALPHA THIN FILM RTD SENSOR, DIN EN 60 751  
SEE TABLE 1, DIM A FOR SENSOR ACCURACY  
P100-21040106: ±.12% CLASS B SENSOR  
P100-21040112: ±.12% CLASS B SENSOR  
P100-21040212: ±.04% CLASS 1/3 DIN SENSOR
  - 2) SHEATH: SS304/316, PLASMA WELDED CLOSED ONE END, COMMERCIAL GRADE FINISH
  - 3) CONSTRUCTION: SHEATH CONTAINS MOISTURE RESISTANT POTTING COMPOUND, DELRIN PLASTIC MOLDED OVER THE SHEATH AND FITTING
  - 4) LEADS: (4) 22 AWG, SILVER PLATED COPPER, 7/30 STRANDS, TEFLON INSULATED
  - 5) TERMINATION: M12 MALE 4 POSITIN CONNECTOR
  - 6) OPERATING TEMPERATURE: -40°C TO +200°C EXCEPT CONNECTOR -40°C TO +85°C
  - 7) APPLICATION: IMMERSION PROBE
  - 8) IP67 RATED



**DWG NOT TO SCALE**

QUOTE #: Q21040101 SAMPLE DATE: TBD  
CUSTOMER: TBD  
APPROVED:

This drawing is the intellectual property of Probes Unlimited, Inc. It is not to be reproduced without the express written consent of Probes Unlimited, disclosure of this information is expressly prohibited.  
© Copyright 2021. by Probes Unlimited, Inc. all International Rights reserved.



Manufacturers of OEM Sensing Devices

**Probes Unlimited, Inc.**  
836 W. 8th Street  
Lansdale, PA 19446  
[www.probesunlimited.com](http://www.probesunlimited.com)  
[info@probesunlimited.com](mailto:info@probesunlimited.com)

<b>DRAWING #:</b>  P100-310	<b>REV:</b>  X3
-----------------------------------	-----------------------

ALL DIMENSIONS ARE IN INCHES, STANDARD TOLERANCES UNLESS STATED OTHERWISE: X.XX" = ± .12" X.XXX" = ± .062" ANGLES = ± 3°