

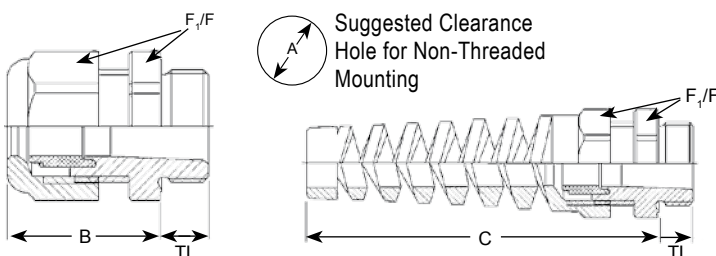


Part Numbers				Cable Range	Thread Type & Size	Dimensions in Inches (mm)				
-40°F to 212°F (-40°C to 100°C)						A	B	C	TL	F ₁ /F
Dome Fittings		Flex Fittings		Inches (mm)	See Page 56 for thread specs	Clearance Hole	Body Length (Dome)	Body Length (Flex)	Thread Length	Wrench Flats
Black	Gray	Black	Gray			+ .01" (+.25 mm)				
CD12MA-BK	CD12MA-GY	CF12MA-BK	CF12MA-GY	.12 - .26 (3 - 6.5)	M12 X 1.5	.47 (12)	.83 (21)	2.13 (54)	.31 (8)	.59 (15)
CD12MR-BK	CD12MR-GY	CF12MR-BK	CF12MR-GY	.08 - .20 (2 - 5)						
CD16MA-BK	CD16MA-GY	CF16MA-BK	CF16MA-GY	.16 - .31 (4 - 8)	M16 X 1.5	.63 (16)	.87 (22)	2.48 (63)	.31 (8)	.75 (19)
CD16MR-BK	CD16MR-GY	CF16MR-BK	CF16MR-GY	.08 - .24 (2 - 6)						
CD17MA-BK	CD17MA-GY	CF17MA-BK	CF17MA-GY	.20 - .39 (5 - 10)	M16 X 1.5 Enlarged	.63 (16)	.98 (25)	3.07 (78)	.31 (8)	.87 (22)
CD17MR-BK	CD17MR-GY	CF17MR-BK	CF17MR-GY	.12 - .28 (3 - 7)						
CD20MA-BK	CD20MA-GY	CF20MA-BK	CF20MA-GY	.24 - .47 (6 - 12)	M20 X 1.5	.79 (20)	1.06 (27)	3.54 (90)	.35 (9)	.94 (24)
CD20MR-BK	CD20MR-GY	CF20MR-BK	CF20MR-GY	.20 - .35 (5 - 9)						
CD22MA-BK	CD22MA-GY	CF22MA-BK	CF22MA-GY	.39 - .55 (10 - 14)	M20 X 1.5 Enlarged	.79 (20)	1.10 (28)	3.94 (100)	.39 (10)	1.06 (27)
CD22MR-BK	CD22MR-GY	CF22MR-BK	CF22MR-GY	.28 - .47 (7-12)						
CD25MA-BK	CD25MA-GY	CF25MA-BK	CF25MA-GY	.51 - .71 (13 - 18)	M25 X 1.5	.98 (25)	1.22 (31)	4.49 (114)	.43 (11)	1.30 (33)
CD25MR-BK	CD25MR-GY	CF25MR-BK	CF25MR-GY	.35 - .63 (9 - 16)						
CD32MA-BK	CD32MA-GY	-	-	.71 - .98 (18 - 25)	M32 X 1.5	1.26 (32)	1.54 (39)	-	.43 (11)	1.65 (42)
CD32MR-BK	CD32MR-GY	-	-	.51 - .79 (13 - 20)						
CD40MA-BK	CD40MA-GY	-	-	.87 - 1.26 (22 - 32)	M40 X 1.5	1.57 (40)	1.89 (48)	-	.51 (13)	2.09 (53)
CD40MR-BK	CD40MR-GY	-	-	.79 - 1.02 (20 - 26)						
CD50MA-BK	CD50MA-GY	-	-	1.26 - 1.50 (32 - 38)	M50 X 1.5	1.97 (50)	1.93 (49)	-	.51 (13)	2.36 (60)
CD50MR-BK	CD50MR-GY	-	-	.98 - 1.22 (25 - 31)						
CD63MA-BK	CD63MA-GY	-	-	1.46 - 1.73 (37 - 44)	M63 X 1.5	2.48 (63)	1.93 (49)	-	.55 (14)	2.56 (65) / 2.68 (68)
CD63MR-BK	CD63MR-GY	-	-	1.14 - 1.38 (29 - 35)						

*UL f1 (746C) rating applies to Black Nylon Fittings only.



Installs in either knockout or threaded holes.



Dome Fittings also available with the following approvals:



www.SealconEX.com



Optional Locking Nuts, O-Rings & Other Accessories starting on Page 29 - 40.