

## Product Advisory

Issue Date: May 9, 2023

**Change Type:**

Packaging update to consolidate labeling

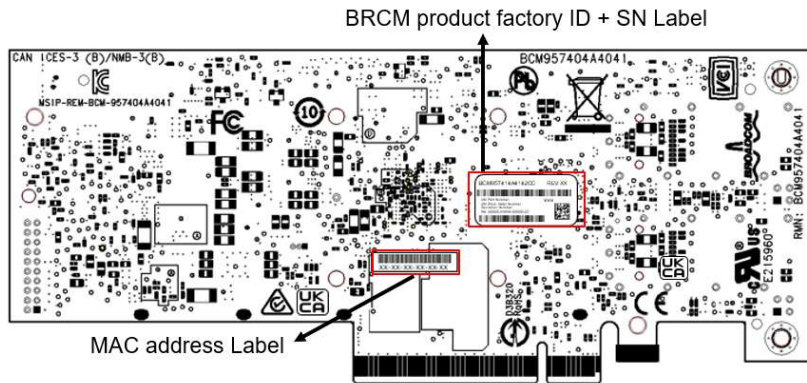
**Parts Affected:**

Part Numbers			
BCM95719A1904AC	BCM957414A4140C	BCM957504-M1100G16	BCM957508-N2100GI
BCM95719N1905C	BCM957414A4142CC	BCM957504-N1100G	BCM957508-P1200G
BCM95719N1905CI	BCM957414M4142C	BCM957504-N1100GD	BCM957508-P2100G
BCM95720A2003AC	BCM957414M4143C	BCM957504-N1100GI	BCM958802A8046C
BCM95720A2003ACBLK	BCM957414M4146C	BCM957504-N2100GI	
BCM957302A3021AC	BCM957414N4140C	BCM957504-N425G	
BCM957314A3143CC	BCM957414N4140CI	BCM957504-N425GI	
BCM957412A4120AC	BCM957416A4160C	BCM957504-P425G	
BCM957412M4122C	BCM957416M4163C	BCM957508-N1200G	
BCM957412M4123C	BCM957416N4160C	BCM957508-N1200GI	
BCM957412N4120C	BCM957416N4160CI	BCM957508-N2100G	
BCM957412N4120CI	BCM957502-N150G	BCM957508-N2100GD	

**Description and Extent of Change:**

The Product Factory ID label, MAC Address label and Serial Number label will be combined into a single new label.

Current PCBA labels (PCIe card):

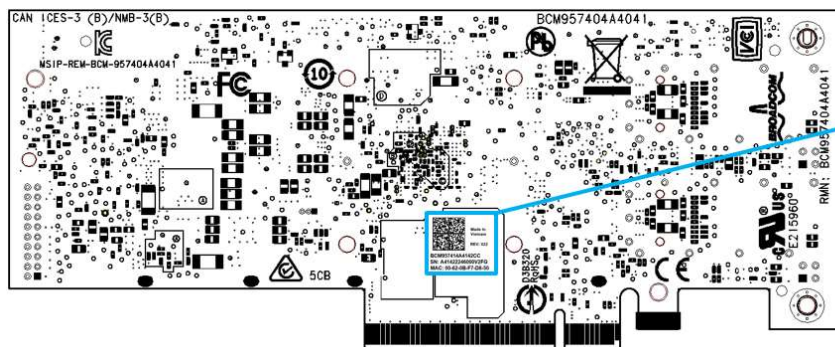


BCM product factory ID + SN Label



Image of label is for illustrative purposes only – Actual label may contain different data

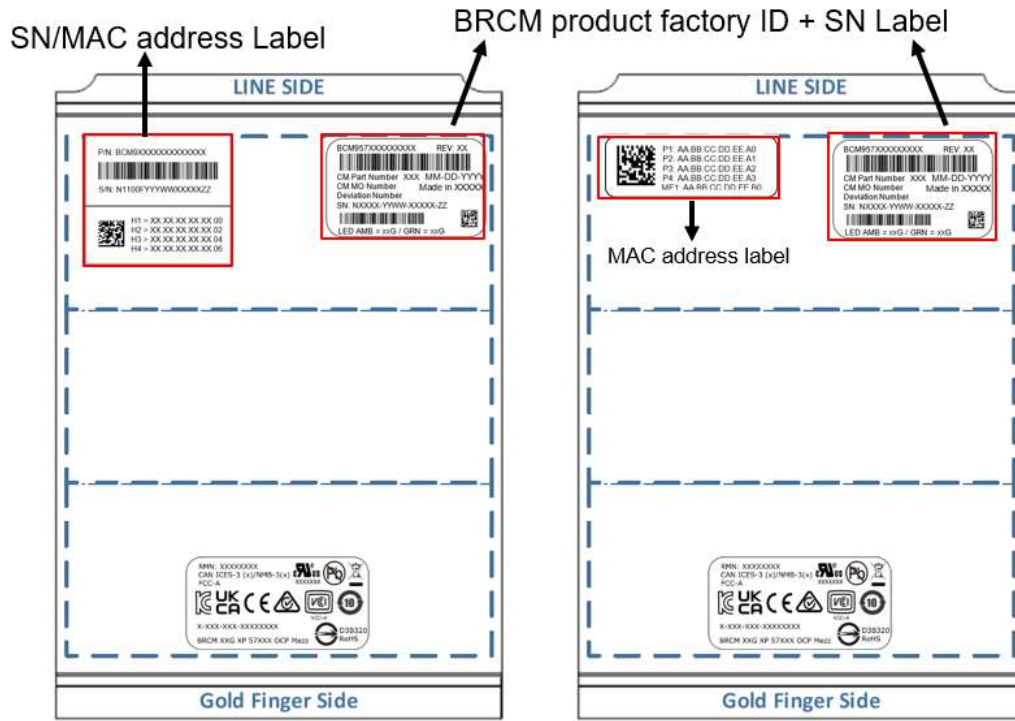
New PCBA labels (PCIe card):



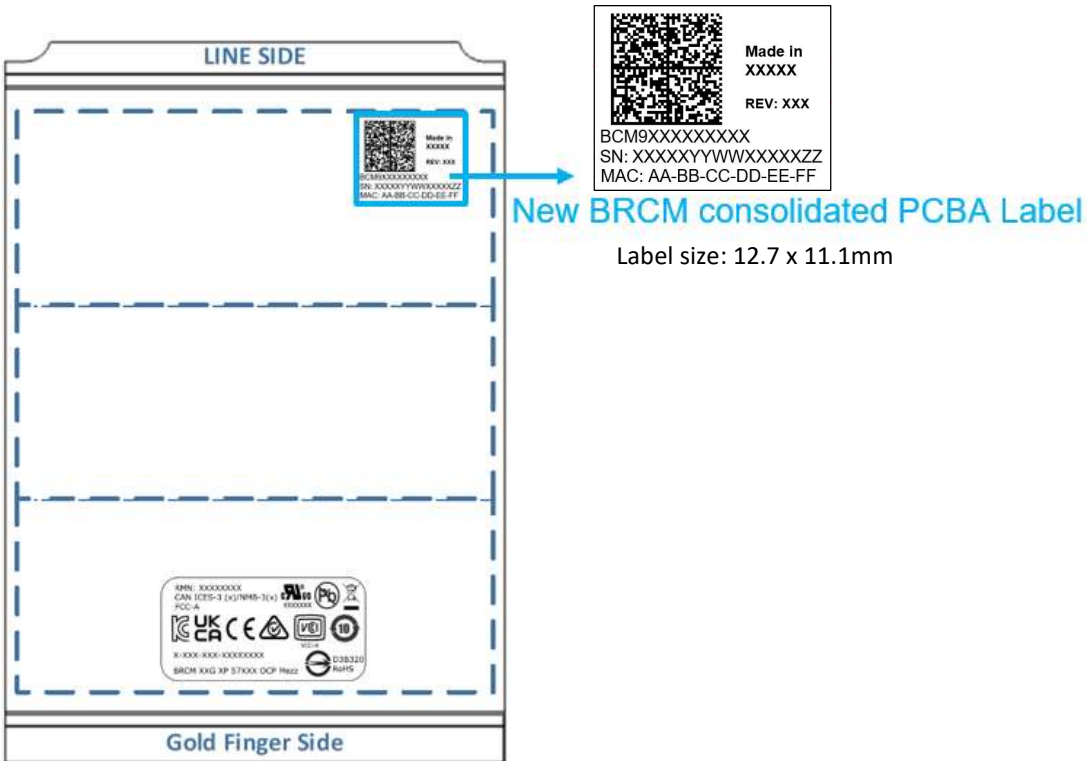
New BRCM consolidated PCBA Label

Label size: 12.7 x 11.1mm

Current PCBA labels (OCP 3.0 card):



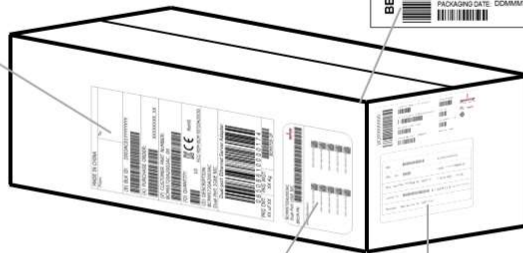
New PCBA labels (OCP 3.0 card):



**Current Carton Label**

MADE IN VIETNAM	
From :	To :
(B) OP ID: P425G18YYYYYY	
(K) PURCHASE ORDER: XXXXXXXXXX	
(P) CUSTOMER PART NUMBER: BCM957504-P425G REV: 18	
(Q) QUANTITY: XX	
 R-R-BCM-CX15D105	
(D) DESCRIPTION: P425G Thor 4 x 25G NIC Generic	
 1 6 5 0 8 6 1 0 0 6 3 5 7	
PKG CNT: XX of XX	PKG WGT: XX Kg
 BCM425-4P	

Box ID label



BBXXXXXXXX	CARTON MODEL # PK:XXX	VENDOR NAME
	UP SUPPLIER ID BCMXXXXXXXXXXXXXXX	 RoHS
	SD DATE CODE: YYYYWW	QTY QUANTITY: XXX
	PACKAGING DATE: CMMYYYY	ASSEMBLED IN VIETNAM

LPN label

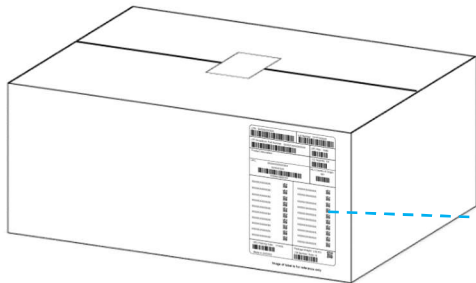
BCM957504-P425G	
P425G Thor 4 x 25G NIC Generic	
BRCM PN:	
Serial Numbers:	
P425G-YYYY-C0000-FG	P425G-YYYY-C0000-FG
P425G-YYYY-C0000-FG	P425G-YYYY-C0000-FG
P425G-YYYY-C0000-FG	P425G-YYYY-C0000-FG
P425G-YYYY-C0000-FG	P425G-YYYY-C0000-FG
P425G-YYYY-C0000-FG	P425G-YYYY-C0000-FG

SN label

MO:	XXXXXXXXXX
Qty: XX	Date: YYYY/MM/DD
Hon Hai P/N: F57504-P425G	FXCN REV: VVSS
Carton ID:	P425G18YYYYYY
Remark: BRCM P/N: P425G18	

Factory carton label

**New Carton Label**



LPN: BXSSSSSSSS	Lot Number: ZAYYSSSSSS
(1P) Broadcom Part Number: XXXXX:XXXXXXXXXX	(2P) Rev: RRR
Product Description:	(Q) Quantity: XX
UPC: XXXXXXXXXXXXX	(4L) Country of Origin: MY
 1650861006357	
XXXXXXXXXXXX	XXXXXXXXXXXX
XXXXXXXXXXXX	XXXXXXXXXXXX
XXXXXXXXXXXX	XXXXXXXXXXXX
XXXXXXXXXXXX	XXXXXXXXXXXX
XXXXXXXXXXXX	XXXXXXXXXXXX
XXXXXXXXXXXX	XXXXXXXXXXXX
XXXXXXXXXXXX	XXXXXXXXXXXX
XXXXXXXXXXXX	XXXXXXXXXXXX
(9D) Packing Date: YYYYWW	Package Weight: 3.00 KG
Made in XXXXXX	CM Number: Note 14

Label size: 5 x 4 inches

**Reasons for Change:**

The change is being implement to further enhance supply continuity and standardize package labeling across the product line.

**Effect of Change on Fit, Form, Function, Quality, or Reliability:**

The adapter specification will remain the same. No changes to adapter form, fit, function, quality and reliability.



**Effective Date of Change:**

The label consolidation will be implemented as a running change. Product shipments start after May 15, 2023.

---

Please contact your Broadcom field sales engineer or Contact Center for any questions or support requirements. Please return any response as soon as possible, but not to exceed 30 days.