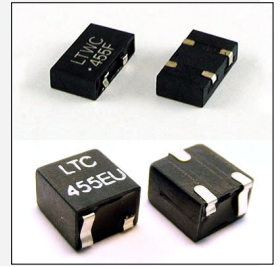


CERAMIC FILTER - 450KHZ SERIES

LTC450-U Series (SMD 3 pads)

LTC450-W Series (SMD 4 pads)

OPERATING TEMPERATURE: -20°C TO +80°C



► LTC450-U

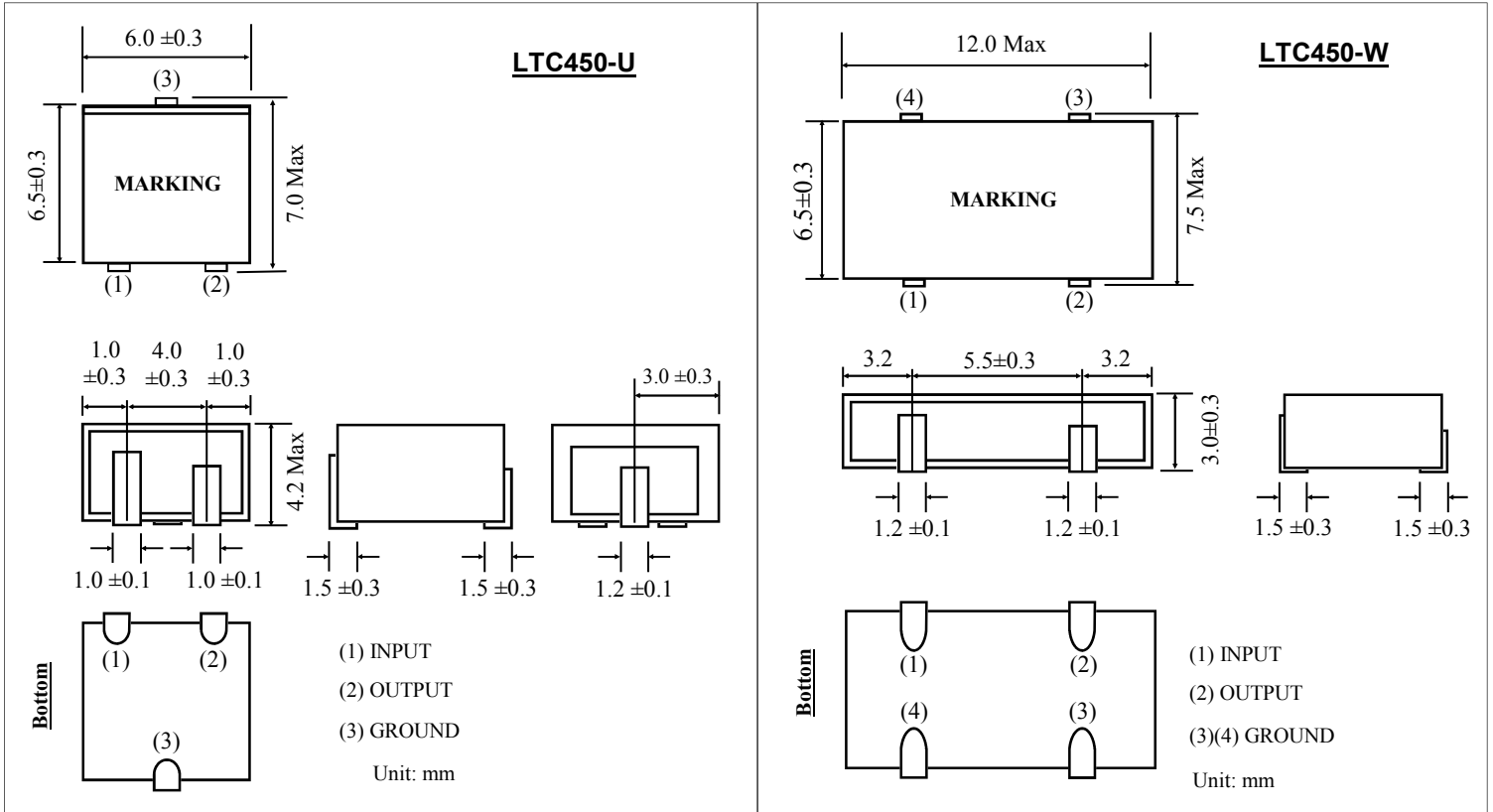
PART NUMBER	CENTER FREQUENCY (kHz)	INSERTION LOSS (dB) MAX.	PASS BAND RIPPLE (dB) MAX.	AT 6dB BANDWIDTH (kHz) MIN.	50dB BANDWIDTH (kHz) MAX.	STOP BAND ±100kHz (dB) MIN.	INPUT/OUTPUT IMPEDANCE (Ω)
LTC450BU	450 ± 2.0	4	2	± 15.0	± 30.0	30	1500
LTC450CU	450 ± 2.0	4	2	± 12.5	± 24.0	30	1500
LTC450DU	450 ± 1.5	4	2	± 10.0	± 20.0	30	1500
LTC450EU	450 ± 1.5	6	2	± 7.5	± 15.0	30	1500
LTC450FU	450 ± 1.5	6	2	± 6.0	± 12.5	30	2000
LTC450GU	450 ± 1.5	6	2	± 4.5	± 10.0	30	2000
LTC450HU	450 ± 1.0	6	2	± 3.0	± 9.0	30	2000
LTC450IU	450 ± 1.0	6	2	± 2.0	± 7.5	30	2000
LTC450HTU	450 ± 1.0	6	2	± 3.0	± 9.0	35	2000

► LTC450-W

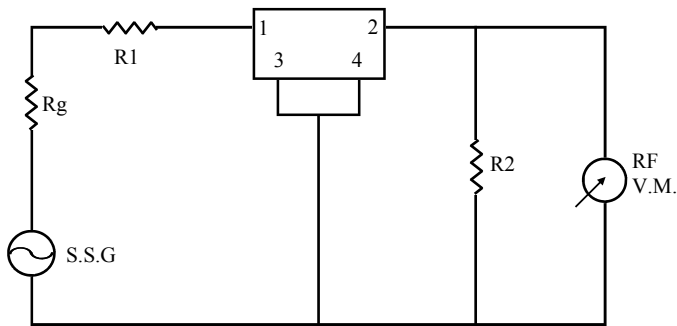
PART NUMBER	CENTER FREQUENCY (kHz)	INSERTION LOSS (dB) MAX.	PASS BAND RIPPLE (dB) MAX.	AT 6dB BANDWIDTH (kHz) MIN.	50dB BANDWIDTH (kHz) MAX.	STOP BAND ±100kHz (dB) MIN.	INPUT/OUTPUT IMPEDANCE (Ω)
LTC450BW	450 ± 2.0	4	2	± 15.0	± 30.0	40	1500
LTC450HW	450 ± 2.0	4	2	± 12.5	± 24.0	40	1500
LTC450DW	450 ± 1.5	4	2	± 10.0	± 20.0	40	1500
LTC450EW	450 ± 1.5	6	2	± 7.5	± 15.0	40	1500
LTC450FW	450 ± 1.5	6	2	± 6.0	± 12.5	40	2000
LTC450GW	450 ± 1.5	6	2	± 4.5	± 10.0	40	2000
LTC450HW	450 ± 1.0	6	2	± 3.0	± 9.0	40	2000
LTC450IW	450 ± 1.0	6	2	± 2.0	± 7.5	40	2000
LTC450HTW	450 ± 1.0	6	2	± 3.0	± 9.0	60	2000

Transko Electronics, Inc reserves the right to make changes to the product (s), service (s), and specification (s) described herein without notice. See "Terms of Sale" for details on our website.

► **PACKAGE DIMENSIONS**

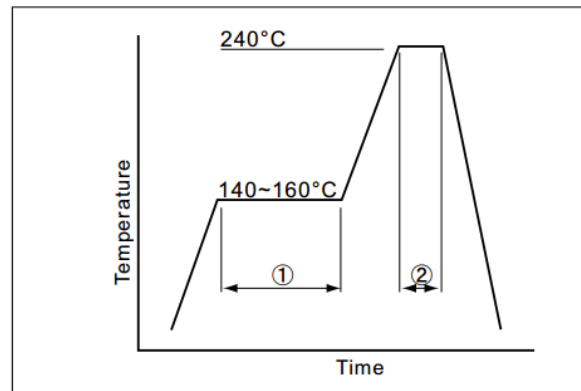


► **TEST CIRCUIT**



$R_g + R_1 = R_2 =$ INPUT/OUTPUT IMPEDANCE
RF V.M. (RADIO FREQUENCY VOLTAGE METER)
S.S.G. (STANDARD SIGNAL GENERATION)

► **REFLOW**



①	Preheat	140~160°C	120sec.
②	Peak	240°C	10sec.