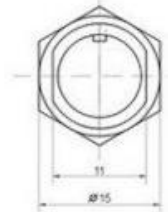
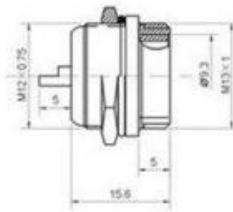
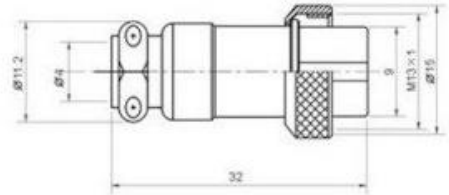




## CONNECTOR-GX12-4

### AVIATION PLUG 4 PIN CONNECTORS TYPE RS765 (GX12)



针脚数 No. of Pin	12-2	12-3	12-4	12-5
触点排列 Contact Arrangements				
接触体直径数量	$\phi 1.2 \times 2$	$\phi 1.2 \times 3$	$\phi 1.2 \times 4$	$\phi 1.2 \times 5$
额定电流/电压	5A/250V	5A/250V	5A/250V	5A/250V
耐电压 (AC, V) 1分钟	1500	1500	1500	1500
绝缘阻抗 (M $\Omega$ ) DV500V	2000	2000	2000	2000

Male (Cable End) and Female (Panel) sold in set together. Great connector for stepper motors or power supply.

### FEATURES

- Number of pins: 4pin
- Shell: Zinc, nickel plating
- Install diameter: 12mm
- Insulator: Bakelite inner core
- Installation way: Thread tighten
- Plug with socket connection type: Thread tighten
- Environment temperature: -50~+70C°
- Relative humidity: up to 98%
- Atmospheric pressure: up to 4,4kpa
- Vibration: vibration freq 10~100Hz, acceleration 100m/s<sup>2</sup>
- Shock: Frequency 60~80 /min, acceleration 250m/s<sup>2</sup>
- Nominal voltage: 250VAC 300VDC
- Rated current: 5A
- Contact resistance: not more than 5m $\Omega$
- Insulation resistance:  $\geq 500M\Omega$
- Temperature rise: ambient temperature +50C°