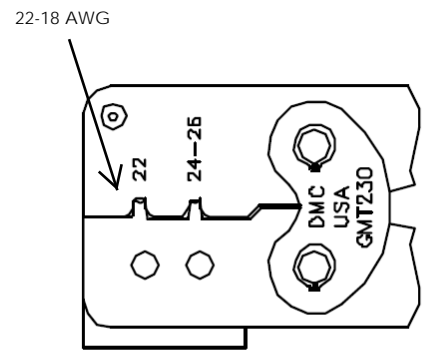
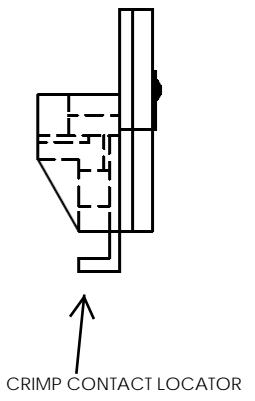
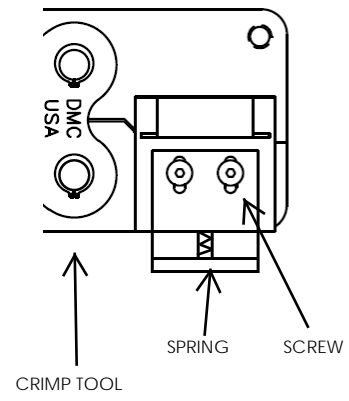
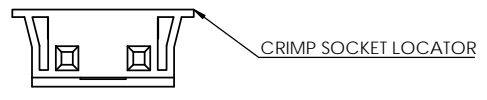
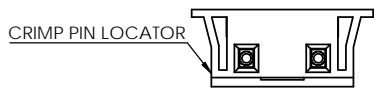
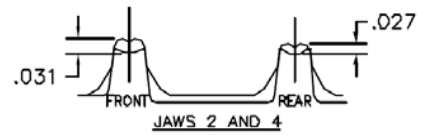
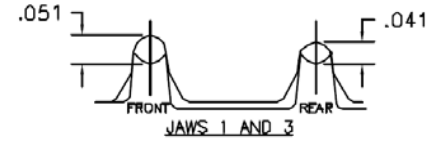
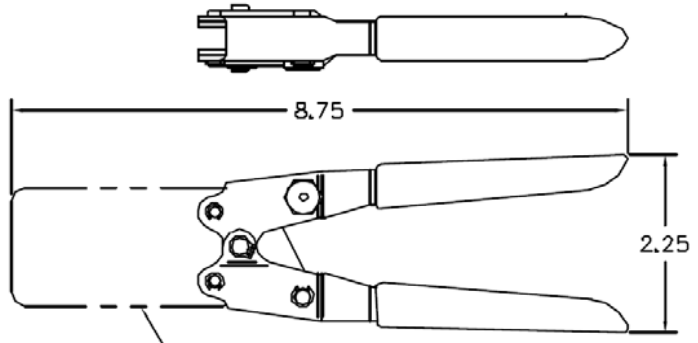


REVISIONS			
REV	DESCRIPTION, ECN, EAR NO.	DATE	APP'D
B	UPDATED SALES DRAWING	JUL03/19	S.M



VIEW "A"

NOTES:

1. CRIMP PIN LOCATOR TO BE USED WITH PIN CONTACT ONLY
2. CRIMP SOCKET LOCATOR TO BE USED WITH SOCKET CONTACT ONLY
3. PLEASE REFER TO APPLICATION SPECIFICATION NO. S 6147C



AMPHENOL PART No. FLH-CT-0-01

UNLESS SPECIFIED OTHERWISE	DRAWN	B.COPPING	DEC03/18
PRIMARY UNITS MILLIMETERS	CHECKED	S.MUGAN	DEC03/18
SECONDARY REFERENCE IN PARENTHESES	M.E. APP'D		
GENERAL TOLERANCES	Q.A. APP'D		
1 DECIMAL PLACE	DWG APPR.		
2 DECIMAL PLACES	ENG. REL. NO.		
3 DECIMAL PLACES	REF.		
ANGULAR DEGREES	THIRD ANGLE PROJECTION		DO NOT SCALE DRAWING

Amphenol Canada Corp. Commercial Products			
FLH CRIMP TOOL ASSY			
DWG. NO.	P-FLH-CT-0-01		REV B
CODE ID NO. 03554	DWG SIZE: X	SCALE: 5:1	SHEET 1 OF 1