

DIP M49/S-SMD

7.0 x 4.0 x 2.3mm 2PINS



MDH Technology Co.,Ltd

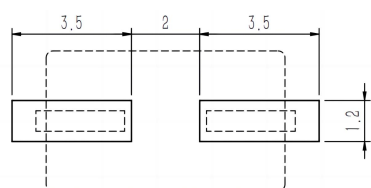
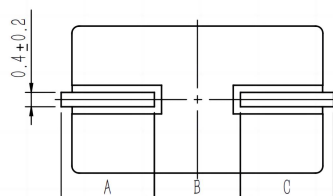
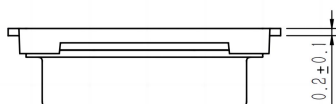
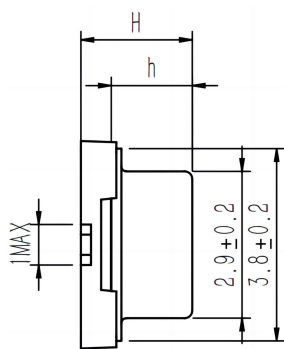
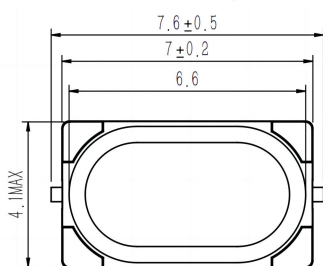
ELECTRICAL CHARACTERISTICS

PARAMETERS	CONDITIONS	M49/S			UNIT
		MIN	TYP	MAX	
Frequency		6		40	MHz
Mode	Fundamental	-	-	-	-
Frequency Tolerance	At 25°C	± 10		± 100	ppm
Frequency Stability		± 10		± 100	ppm
Operating Temperature	-20~+70°C, -40~+85°C, or specify				
Equivalent Series Resistance	See Table 1				
Shut Capacitance	C0			5	pF
Load Capacitance	-	to be specified			pF
Drive Level	DL			100	uW
Storage Temperature	-	-45		+85	°C
Aging	-			± 5	ppm/Year

TABLE 1 - STANDARD ESR

Frequency(MHz)	ESR Ω Max.
6.000~12.000	200
12.000~16.000	60
16.500~30.000	50
30.000~40.000	40

DIMENSIONS(mm)



A	2.6 ± 0.2
B	2.4 ± 0.1
C	2.6 ± 0.2
H	2.3MAX
h	1.8MAX