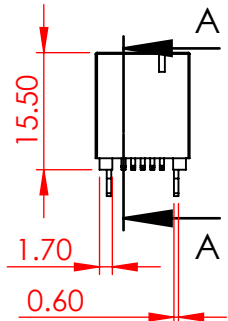
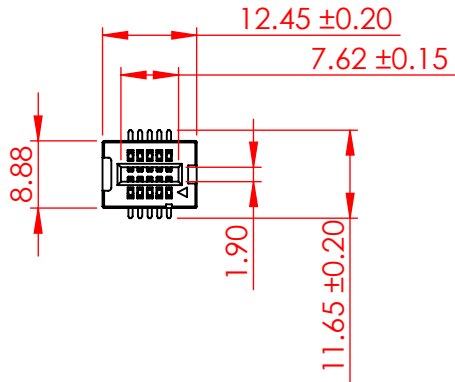


TOLERANCE UNLESS OTHERWISE SPECIFIED	
0-10	±0.20
10-30	±0.30
30-100	±0.40

THIS IS A C.A.D. GENERATED DRAWING  
DO NOT MAKE MANUAL REVISIONS TO MASTER.

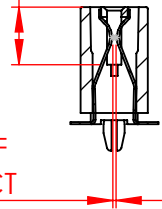


ISSUE NUMBER	
ORIGINAL	①

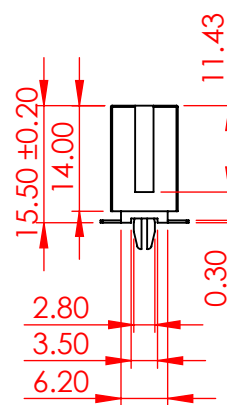


7.62  
CARD SLOT

0.60  
POINT OF  
CONTACT



SECTION A-A  
SCALE 1 : 1



**SPECIFICATIONS:**

**MATERIAL:**  
**HOUSING:**  
**CONTACT:**  
**PLATING:**

HI-TEMP THERMOPLASTIC, PPS  
COPPER ALLOY  
GOLD FLASH PLATING ON CONTACT AREA,  
TIN PLATING ON SOLDERING AREA

**ELECTRICAL**  
**VOLTAGE RATING:**  
**CURRENT RATING:**  
**DIELECTRIC**

250 VAC RMS  
1A

**WITHSTANDING VOLTAGE:**  
**INSULATION RESISTANCE:**  
**CONTACT RESISTANCE:**

500VAC RMS 60Hz FOR 60s  
1000 MEGA OHMS MIN AT 500VDC  
30 mOHMS MAX

**MECHANICAL**

**RETENTION FORCE:**  
**INSERTION FORCE:**  
**WITHDRAWAL FORCE:**

460g MIN PER CONTACT  
230g MAX PER CONTACT PAIR  
15g MIN PER CONTACT PAIR

**ENVIRONMENTAL**

**TEMPERATURE RANGE:**

-55°C TO +105°C

**NOTE:**

8, 10, 12, 16, 20, 40, 50, 60, 80 AND 120 POSITIONS ARE AVAILABLE



THIS SERIES FULLY CONFORMS TO  
THE EUROPEAN UNION DIRECTIVES  
2011/65/EU FOR RoHS COMPLIANCY.



YOUR CONNECTION TO QUALITY & SERVICE

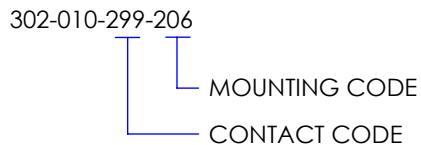
EDAC INC  
TORONTO, ONTARIO  
CANADA

THESE DRAWINGS AND SPECIFICATIONS  
ARE THE PROPERTY OF EDAC INC., AND  
SHALL NOT BE REPRODUCED, OR COPIED  
OR USED AS THE BASIS FOR THE  
MANUFACTURE OR SALE OF APPARATUS  
WITHOUT WRITTEN PERMISSION.

302 SERIES CARD EDGE CONNECTOR		ACAD REFERENCE NO.:	302 Assembly	UNIT:	MM
		DRAWN:	J.L.	DATE:	June 6, 2023
CHECKED:		DATE:			
SCALE:	1:1	SHEET	1 OF 2		
DRAWING NUMBER:	302-010-299-206	ISSUE			
PART NUMBER:	302-010-299-206		1		

NO. OF POS.	DIMENSION A			DIMENSION C	
	CONTACT CODE 21	CONTACT CODE 58	CONTACT CODE 99	MOUNTING CODE 05	MOUNTING CODE 06
04		1.27*		5.08	NA
06		2.54*		6.35	NA
08		3.81		7.62	7.62
10		5.08		8.89	8.89
12		6.35		10.16	10.16
14		7.62*		11.43	NA
16		8.89		12.70	12.70
20		11.43		15.24	15.24
22		12.70*		16.51	NA
24		13.97*		17.78	NA
26		15.24*		19.05	NA
30		17.78*		21.59	NA
32		19.05*		22.86	NA
36		21.59*		25.40	NA
40		24.13		27.94	27.94
48		29.21*		33.02	NA
50		30.48		34.29	34.29
52		31.75*		35.56	NA
60		36.83		40.64	40.64
68	41.91	NA	41.91*	45.72	NA
70	43.18	NA	43.18*	46.99	NA
80		49.53		53.34	53.34
100	62.23	NA	62.23*	66.04	NA
110	68.58	NA	68.58*	72.39	NA
120	74.93	NA	74.93	78.74	78.74
124	77.47	NA	77.47*	81.28	NA

\*NOT AVAILABLE FOR CONTACT CODE 99 WITH MOUNTING CODE 06  
 NA = NOT AVAILABLE



THIS SERIES FULLY CONFORMS TO THE EUROPEAN UNION DIRECTIVES 2011/65/EU FOR RoHS COMPLIANCY.



YOUR CONNECTION TO QUALITY & SERVICE

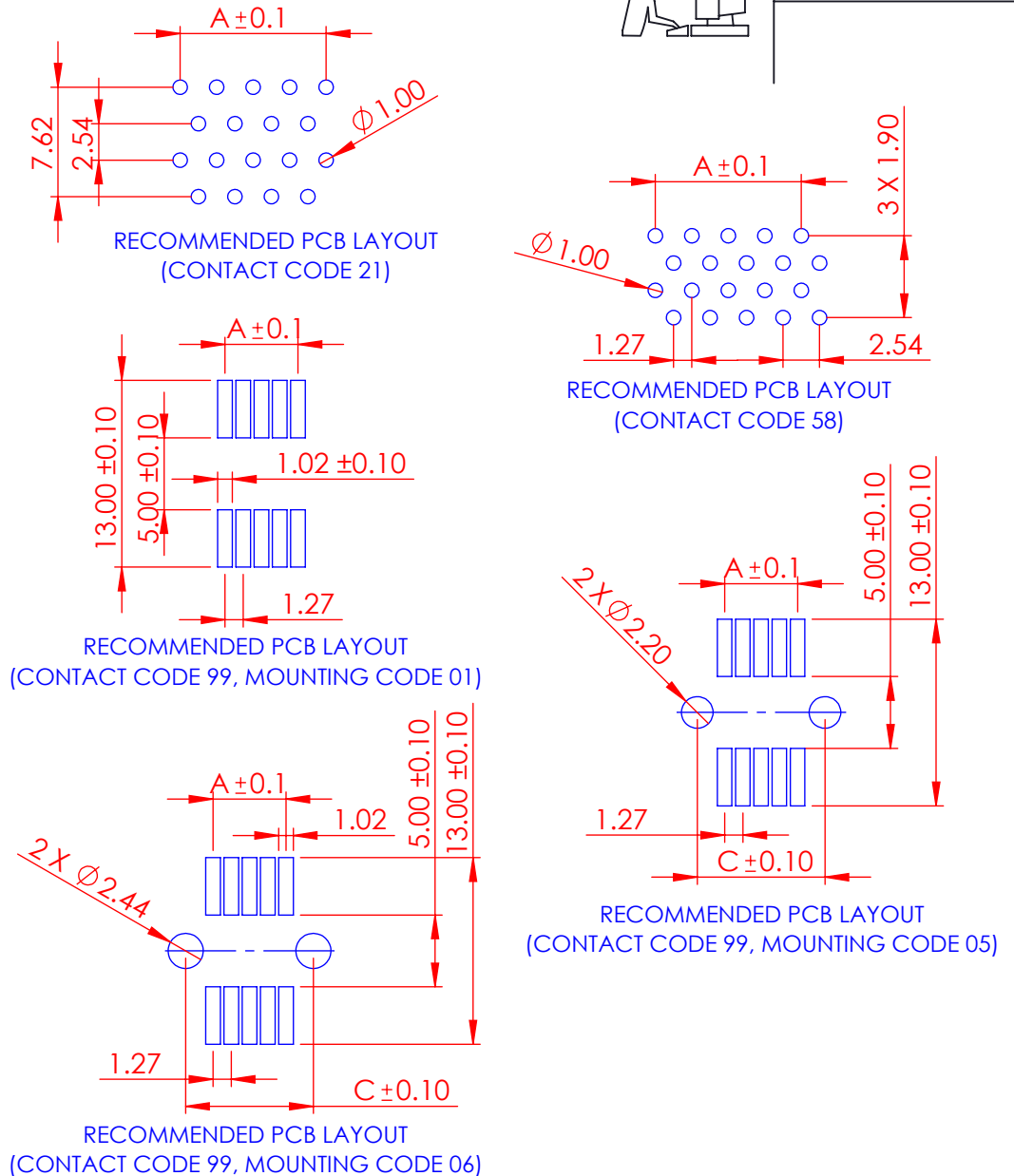
EDAC INC  
 TORONTO, ONTARIO  
 CANADA

THESE DRAWINGS AND SPECIFICATIONS ARE THE PROPERTY OF EDAC INC., AND SHALL NOT BE REPRODUCED, OR COPIED OR USED AS THE BASIS FOR THE MANUFACTURE OR SALE OF APPARATUS WITHOUT WRITTEN PERMISSION.

THIS IS A C.A.D. GENERATED DRAWING  
 DO NOT MAKE MANUAL REVISIONS TO MASTER.



ISSUE NUMBER  
 ORIGINAL 1



### 302 SERIES CARD EDGE CONNECTOR

ACAD REFERENCE NO.:	302 ASSEMBLY	UNIT: MM
DRAWN:	J.L.	DATE: June 6, 2023
CHECKED:		DATE:
SCALE:	1:1	SHEET 2 OF 2
DRAWING NUMBER:	302-010-299-206	ISSUE
PART NUMBER:	302-010-299-206	1