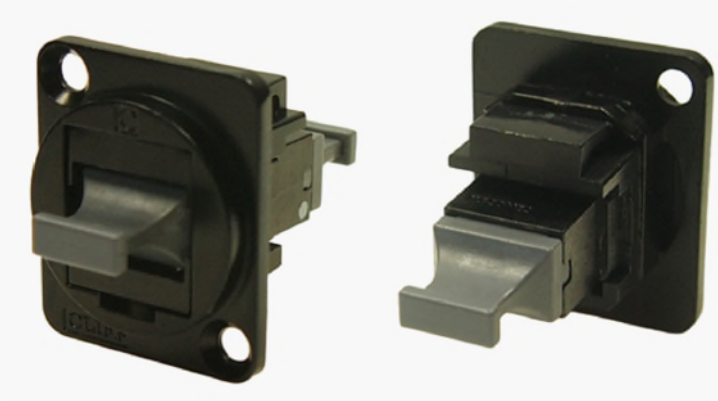
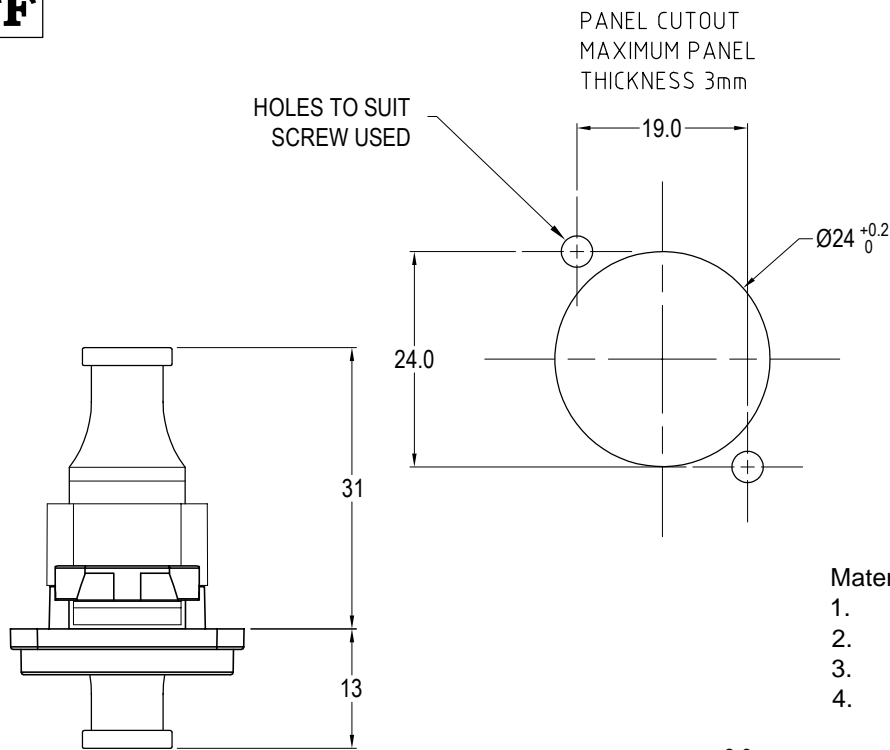
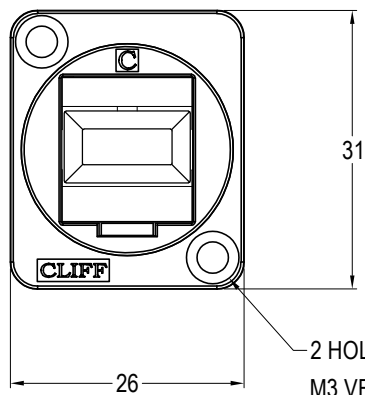


ISS.	AMEND	DATE
1	ISSUED	27/04/21

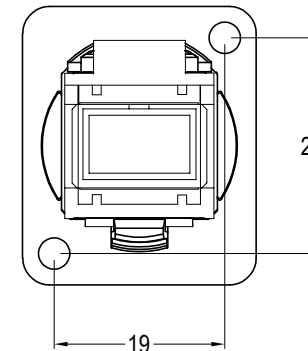
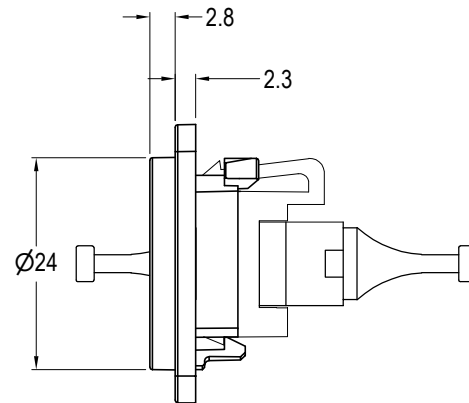


VARIANTS	
PART NO.	HOLE DETAILS
CP30245MB	HOLE Ø3.50 X CSK 82° X Ø5.85
CP30245M3B	M3 HOLES

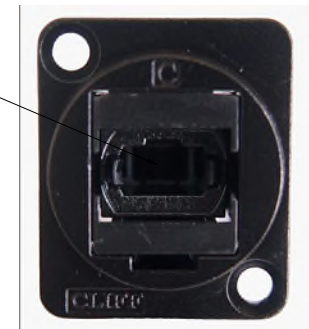
- Material:
1. Coupler Body: PES Black UL94-V0
 2. Dust Cover: PEI
 3. Insert: ABS/PC Black UL94-V0
 4. Frame: Black Nickel plated zinc diecast



2 HOLES: Ø3.5mm CSK 82° x Ø5.85
M3 VERSION HAS M3 THREAD HOLES.



VIEW WITHOUT
DUST COVER



RoHS
✓ COMPLIANT

TOLERANCE
NO DEC. PLACE ±
1 DEC. PLACE ±
2 DEC. PLACE ±
HOLE Ø ±
ANGLES ±
UNLESS
OTHERWISE STATED

DO NOT SCALE

Cliff Electronic Components Ltd.
76 Holmehorpe Avenue, Holmehorpe Industrial Estate,
Redhill, Surrey, RH1 2PF, England, UK
Tel: 01737-771375 Fax: 01737-766012 Website: www.cliffuk.co.uk

DIMENSIONS IN MILLIMETERS UNLESS OTHERWISE STATED. WORK TO DIMENSIONS. REMOVE ALL BURRS. IF IN DOUBT ASK.

3rd ANGLE PROJECTION:

MATERIAL: See Notes

FINISH: See Notes

DRAWN: D.P.J.

APPROVED: D.P.J.

TITLE: FT BLACK METAL MTP USCONEC ADAPTOR (BLACK)

DRWG. No. **CP30245MB**

FORM: A4DRWGH

THE CONTENTS OF THIS DOCUMENT MUST NOT BE COPIED OR DISCLOSED TO A 3rd PARTY WITHOUT WRITTEN PERMISSION OF CLIFF UK. © 2021