



ORIENT DISPLAY

Your Total LCD Solution Provider

Specification for TFT

AFY1280800A1-10.1INTH-C-HDMI



Revision A

A	Orient Display
FY	TFT Type
1280800	Resolution 1280 x 800
A1	Serial A1
10.1	10.1", Module Dimension 164.8 x 116.2 x 11.15 mm
I	IPS Display
N	Top: -20~+70°C; Tstr: -30~+80°C
T	Transmissive
H	High Brightness 900 cd/m2
C	Capacitive Touch Panel
HDMI	With HDMI Port and USB Port Board
/	IC Controller RTD2662



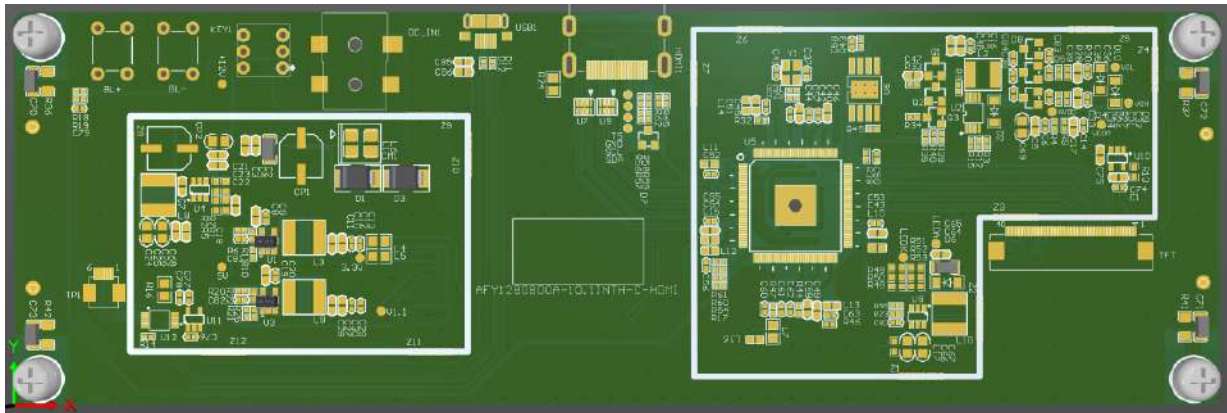
Rev No.	Rev date	Contents	Remarks
O	2023.05.16	First Release	Preliminary
A	2023.06.06		Liquan.Li

CONTENTS

1.MODULE DESCRIPTION	3
2.MOUDLE EXTERNAL DIMENSIONS	5
3.ABSOLUTE MAXIMUM RATINGS	6
4.RELIABILITY TEST CONDITIONS.....	6
5.REMARK:	7

1. MODULE DESCRIPTION

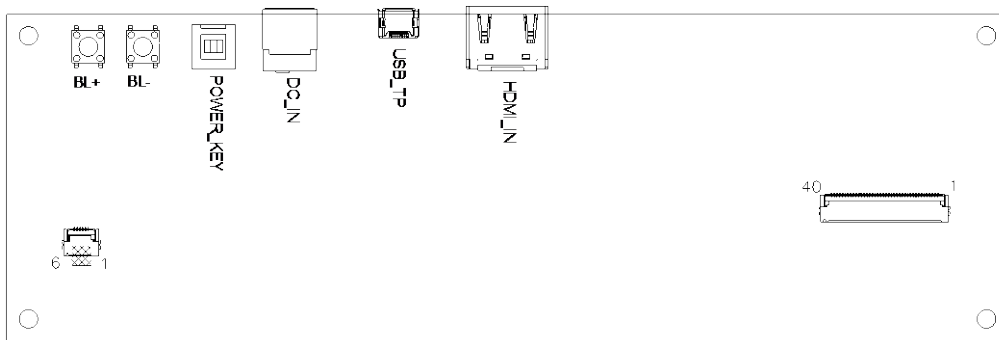
AFY1280800A1-10.1INTH-C-HDMI is a 10.1 "touch display module control panel, widely used in intelligent parking brake, advertising machine, POS machine ,medical display and other scenarios.



(1) GENERAL INFORMATION

Product Introduce		
Input Interface	HDMI	1920*1200@60HZ Resolution
Module Power Supply	DC 12V	
Module Power Consumption	TBD	
OSD Language	Chinses/English	
Weight	TBD	

(2) INTERFACE DESCRIPTION



PWOER: DC 5V



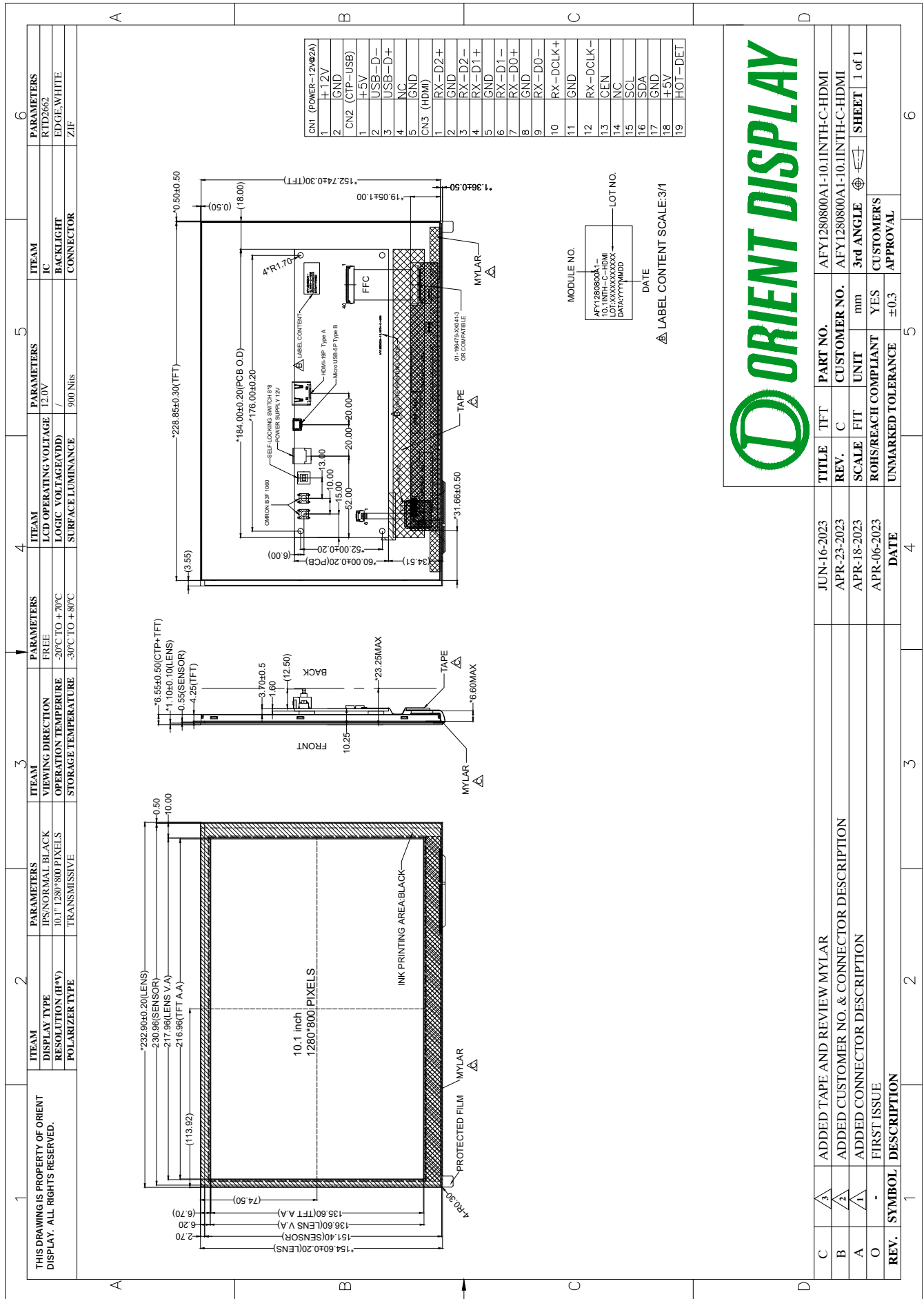
TP: Touch Panel Interface



HDMI: Standard HDMI input



2.MOUDLE EXTERNAL DIMENSIONS



3.ABSOLUTE MAXIMUM RATINGS

Item	Symbol	Min.	Max.	Unit
Power Supply Input Voltage(Module)	VDD	11.7	13.0	V
Operation Temperature	Top	-20	+70	°C
Storage Temperature	Tst	-30	+80	°C
Humidity	RH	-	90%	%RH

4.RELIABILITY TEST CONDITIONS

No.	Test Item	Test condition	Inspection after test
1	High Temperature Storage Test	+80°C/72 hours	Inspection after 2~4 hours storage at room temperature, the sample shall be free from defects : 1.Current changing value before test and after test is 50% larger; 2. Function defect : Non-display,abnormal-display 3.Visual defect : Glass crack.
2	Low Temperature Storage Test	-30°C/72 hours	
3	High Temperature Operating Test	+70°C/48 hours	
4	Low Temperature Operating Test	-20°C/48 hours	
5	Temperature Cycle Storage Test	-30°C ~ 25°C ~ +80°C/10 cycles (30 min.) (10 min.) (30 min.)	
6	High Temperature High Humidity Test	+50°C*90% RH/48 hours	
7	Vibration Test	Frequency : 250 r/min Amplitude : 1 inch Time: 45 min	
8	Drop Test	Drop direction: 1 corner/3 edges/6 sides ,10 times	
		Packing weight(kg)	
		<11	80±1.6
		11≤G<21	60±1.2
		21≤G<31	50±1.0
31≤G<40	40±0.8		
9	ESD Test	Air discharge: ±8 KV, 10 times Contact discharge: ±4 KV, 10 times	

Remark :

- 1.The tested samples should be applied to only one test item.
- 2.Sample size for each test item is 3~5 pcs.
- 3.For High temperature high humidity test, Pure water(Resistance>10MΩ) should be used.
- 4.In case of malfunction defect caused by ESD damage, if it would be recovered to normal state after resetting, it would be judged as a good part.
- 5.Failure judgement criterion: Basic specification, Electrical characteristic, Mechanical characteristic, Optical characteristic.

5.REMARK:

- Avoid any inappropriate external force or strong vibration in the assembly process.
- Do not twist or bend panels and prevent improper external forces from damaging panels during assembly.
- High temperature, high humidity or rapid temperature changes may affect performance. Store and use the product in an appropriate environment.
- Avoid dust, oil mist, acid, alkali and chloride damage to the product.
- Wear wrist straps, antistatic gloves and clothes during assembly to prevent electrostatic discharge (ESD).
- When assembling, use ionic fan to prevent electrostatic discharge (ESD).
- Removing the protective film from the top (PCBA binding side) to the bottom in 3 seconds to prevent electrostatic discharge (ESD).
- Follow the correct time sequence when operating.
- Avoid displaying the same mode/pattern for a long time.
- V-COM voltage should be adjusted after aging (blinking) to display the best performance.
- Turn off the power when connecting or disconnecting the circuit.
- Products may contain small amounts of liquid crystal and comply with local laws and regulations.