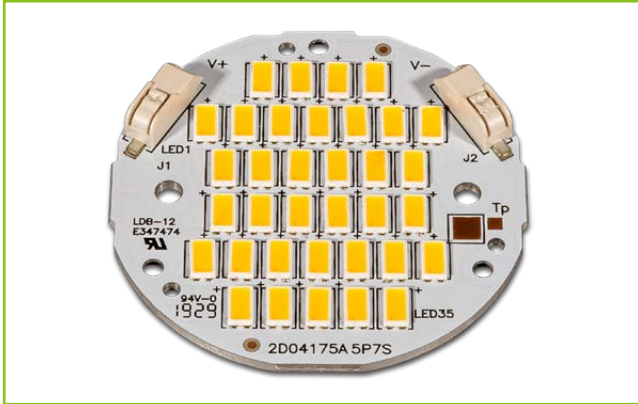




**QLUXR5010W35LED930**  
**10W Round DC LED Board**



<b>Wattage</b>	10W
<b>CRI</b>	90.8
<b>Available CCT</b>	2700K, 3000K
<b>Lumens</b>	≈ 1360 lm
<b>Efficacy</b>	132 lm/W
<b>Number of LEDs</b>	35
<b>Beam Angle</b>	120°
<b>Dimensions</b>	50mm OD
<b>Dimming</b>	Constant Current Reduction



## FEATURES

- Superior Color Rendering CRI 90.8
- High efficacy lumen output 132 lm/W
- LM-80 compliant LEDs
- Tight Binning 3 Step Mac Adam Ellipses
- Uniform & crisp light source intensity
- Hot Spot Free Design
- Exceed ENERGY STAR lumen maintenance requirements
- Extra thin low profile
- Low heat generation, easy thermal management
- Easy to fit in new design or retrofit applications

## APPLICATIONS

Ideal for new and retrofit architectural designs and lighting fixtures.

### Indoor Lighting

- Recessed Can Light
- Ceiling Light
- Wall Sconces
- Table Lamps
- Fixtures
- Signage

### Outdoor Lighting

- Street Light
- Marker Light
- Wall Sconces
- Signage Light

## ELECTRICAL SPECIFICATIONS

Model #	CCT	Typ. Wattage	Typ. Forward Voltage	Min. Forward Voltage	Max. Forward Voltage	Typ. Forward Current	Max. Forward Current
QLUXR5010W35LED927	2700	10W	21V	17V	21.7V	500mA	700mA
QLUXR5010W35LED930	3000						
QLUXR5010W35LED9-XX	Custom CCT						



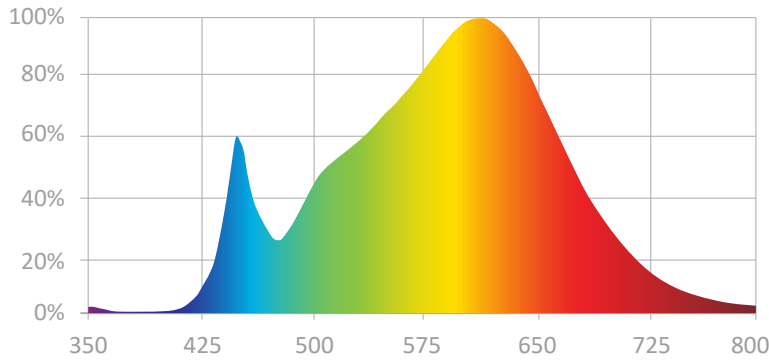
**L.T.F.**

**QLUX DC LED Series**



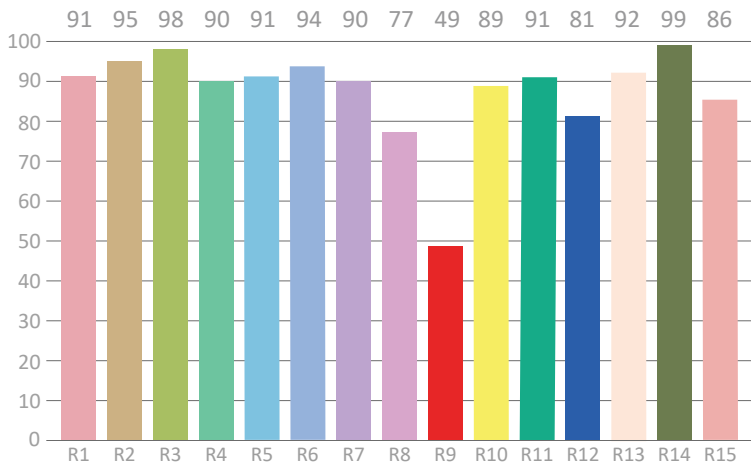
**QLUXR5010W35LED930**  
**10W Round DC LED Board**

**SPECTRORADIOMETRIC CHARACTERISTICS - 3000K**



**Luminous Flux:** 1359.66 lm  
**Radiant Flux:** 4.896 W  
**Efficacy:** 132 lm/W  
**Nominal CCT:** LED\_3000K  
 x0=0.4338 y0=0.4030  
**Chromaticity Coordinates:**  
 x=0.4259 y=0.3975 u'=0.2463 v'=0.5171  
**Chromaticity Difference:** -0.00106Duv  
**CCT:** 3139 K

**CRI TEST RESULTS - 3000K**



**Color Rendering Index (CRI):** Ra=90.8  
**Dominant Wavelength:** 581.0 nm(E)  
**Peak Wavelength:** 615 nm  
**Colour Fidelity Index:** Rf=89  
**Gamut Index:** Rg=99  
**Color Purity:** 0.4734  
**Color Ratio:** Kr=43.2% Kg=48.3% Kb=8.5%  
**Bandwidth:** 166.2 nm

R1=91	R2=95	R3=98	R4=90	R5=91	R6=94	R7=90	R8=77
R9=49	R10=89	R11=91	R12=81	R13=92	R14=99	R15=86	Re=88



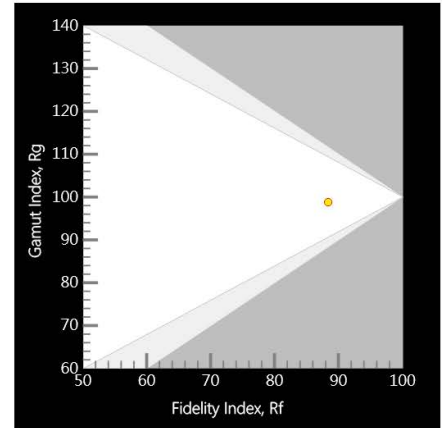
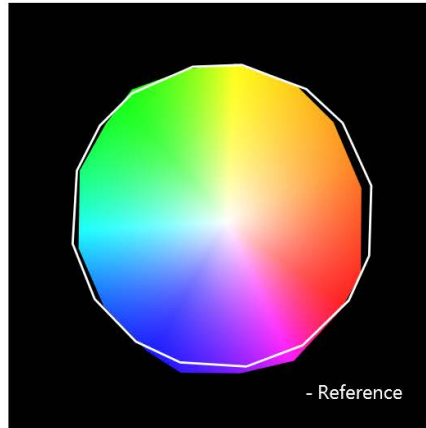
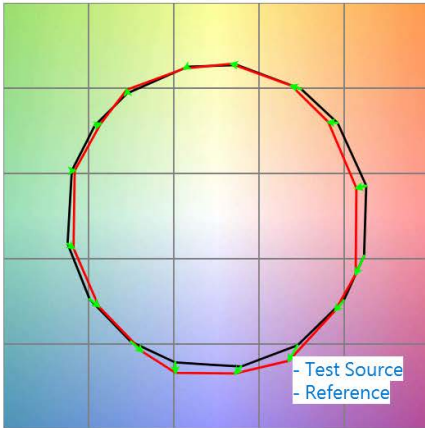
**L.T.F.**

**QLUX DC LED Series**

**QLUXR5010W35LED930  
10W Round DC LED Board**



**TM-30 TEST RESULTS - 3000K**

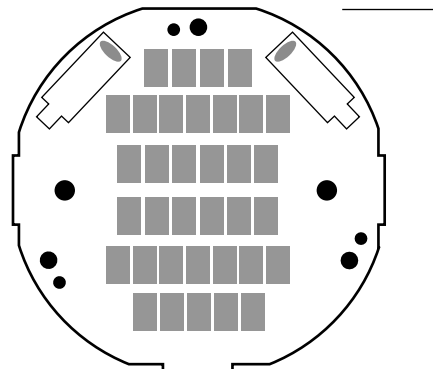


**ABSOLUTE MAXIMUM RATINGS (Ta=25°C)**

	Symbol	Absolute Maximum Rating	Unit
Forward Current	If	700	mA
Peak Power	P	15.2W	W
Operating Temperature	TOPR	-30~+100	°C
Storage Temperature	Tstg	-40~100	°C
Hand soldering condition	Tsld	3.5sec@350°C	sec
Case Temperature	Tc	100	°C
LED Junction Temperature	Tj	125	°C

**MECHANICAL SPECIFICATIONS**

<b>Board Dimensions</b>
50mm OD



50mm OD