



FET1028A-C SoM

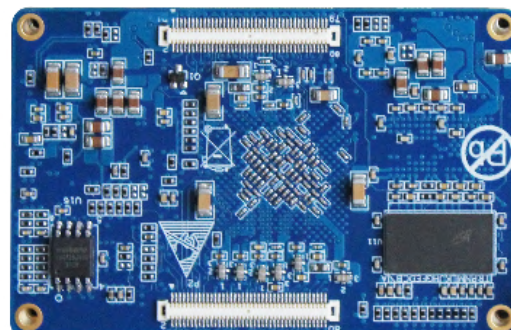
DESCRIPTION



FET1028A-C SoM(system on module) is based on Cortex-A72 featuring dual-core processor LS1028A up to 1.5G Hz. It carries on-board 2GB DDR4 RAM and 8GB eMMC, can support 6 Gigabit Ethernet ports with TSN, 2 CAN-FD, USB3.0, UART, SPI, IIC, LVDS, TF card slot, SATA3.0, Headphone peripheral sources, DP can support 4K display output. It could be widely used into industrial router, TSN, SD-WAN, 5G CPE, edge computing, IP-PBX, IoT, smart transportation, power management and other related applications.

SoM FET1028A-C Features

| | | | |
|---------------|--|----------|--|
| CPU | NXP LS1028A | eSDHC | ≤ 1, SD3.0 |
| Architecture | Cortex-A72 | Ethernet | ≤ 6, CPU has 6 native MAC each up to 2.5Gbps, can support TAN, and one has 4-lane TSN switch |
| Frequency | 1.5GHz | PCIe3.0 | ≤ 2, up to 8GT/s, SerDes configurable |
| RAM | 2GB DDR4 | SATA3.0 | ≤ 1, up to 6Gbps, SerDes configurable |
| ROM | 8GB eMMC | USB3.0 | ≤ 2, up to 5Gbps |
| OS | Ubuntu18.04 | UART | ≤ 4, 1x DUART or 4x UART |
| Voltage input | DC 12V | CAN FD | ≤ 2 |
| Working Temp | -40°C ~ +85°C | IIC | ≤ 6 |
| Package | 2x 80-pin connector, pitch 0.5mm | SPI | ≤ 2 |
| Dimensions | 42mm × 65mm | IIS | ≤ 6 |
| Display Port | ≤ 1, DP1.3 and eDP1.4, up to 4Kp60 | | |
| SerDes | 1x 4-lane SerDes, combinations of SGMII, QSGMII, PCIe and SATA are configurable; frequently combinations: A. SGMII+QSGMII+PCIe2.0 x1+SATA3.0 B. PCIe3.0 x1+QSGMII+PCIe3.0 x2 C. SGMII+QSGMII+PCIe3.0 x2 D. PCIe3.0 x2+ E. SGMII+QSGMII+PCIe3.0 x1+PCIe3.0 x1 F. PCIe3.0 x4 | | |



| OK1028A-C Carrier Board Features | | | |
|----------------------------------|---|------------|---|
| Ethernet | 5, RJ45 connector, 10M/ 100M/ 1000Mbps, all support TSN | UART | 1, 3-wire serial, 3.3V |
| USB Host | 1, USB3.0, Super-speed(5 Gbit/s) | CAN | 2, CAN2.0B and CAN FD, 5Mbit/s |
| LVDS | 1, single 8-bit or dual 8-bit LVDS | SPI | 1, full duplex, host/ slave mode optional |
| Audio | 1, 1x Phone, | IIC | 2, 100/ 400Kbps |
| PCIe | 1, M.2 key E socket, PCIe Gen2, available for 2.4G and 5G WiFi module | TF Card | 1, compatible with SD3.0(UHS-I) |
| SATA | 1, SATA3.0, 1.5Gb/s~ 6.0Gb/s | LED | 2, programmable, controlled by GPIO |
| 4G | 1, Mini PCIe socket, optional with 5G | PWM | 1, for LVDS display backlight |
| 5G | 1, M.2 key B socket, optional with 4G | UART Debug | 1, RS232, DB9 connector |

TARGET APPLICATION

Industrial IoT, TSN, SD-WAN, 5G CPE, edge computing, gateway, IP- PBX, smart factory, information security, intelligent transport, power management, etc.

