

REVISIONS				
REV.	ECN	DESCRIPTION	DATE	APPROVED
-	-	-	-	-
-	-	-	-	-
A		PROPOSAL	APR 01/19	J.SI

AMPHENOL PART NUMBER CONFIGURATION  
 UE86-4G1620-X0X61

**LIGHT PIPE OPTION**

- 0 - NO LIGHT PIPE
- 1 - 4 LP PER 2X1, NORMAL ORIENTATION
- 2 - 2 INNER LP PER 2X1, NORMAL ORIENTATION
- 3 - 2 OUTER LP PER 2X1, NORMAL ORIENTATION
- 4 - 4 LP PER 2X1, REVERSING ORIENTATION
- 5 - 2 INNER LP PER 2X1, REVERSING ORIENTATION
- 6 - 2 OUTER LP PER 2X1, REVERSING ORIENTATION
- 7 - 3 LP PER 2X1, 2 OUTER LP, NORMAL ORIENTATION
- 8 - 3 LP PER 2X1, 2 OUTER LP, REVERSING ORIENTATION

**PACKAGING**

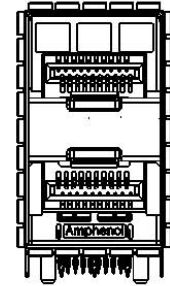
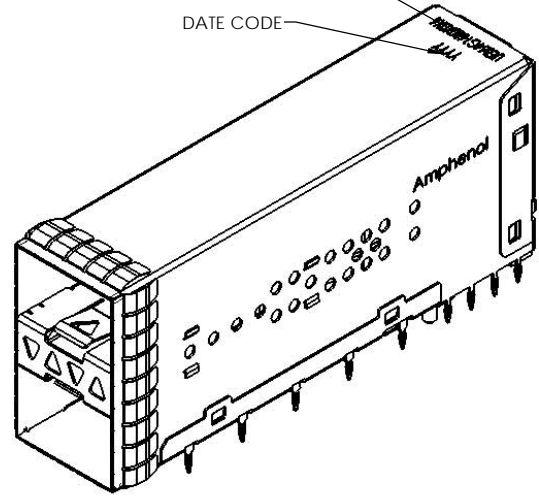
- 1 - TRAY PACKAGING (STACKED)

**PLATING OPTIONS FOR CONNECTOR**

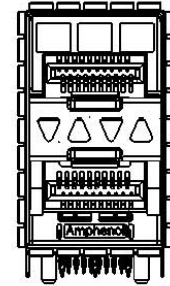
- 2 - 30µ" GOLD PLATING ON MATING AREA  
15-100µ" MATTE TIN ON TERMINATION
- 3 - 30µ" GOLD PLATING ON MATING AREA  
150-300µ" MATTE TIN ON TERMINATION
- 5 - 15µ" GOLD PLATING ON MATING AREA  
15-100µ" MATTE TIN ON TERMINATION
- 6 - 15µ" GOLD PLATING ON MATING AREA  
150-300µ" MATTE TIN ON TERMINATION

PART NUMBER (LAST DIGIT INDICATING PACKAGING TYPE. NOT PRINTED ON THE PART)

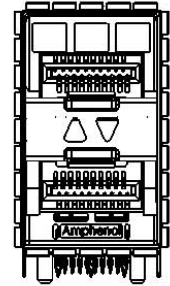
DATE CODE



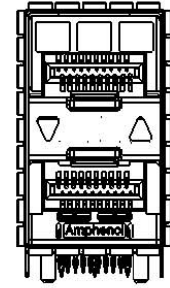
NO LIGHT PIPES  
UE86-4G1620-00X61



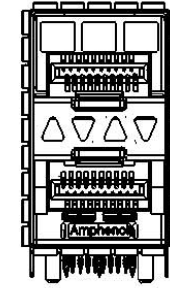
4 LIGHT PIPES  
UE86-4G1620-10X61



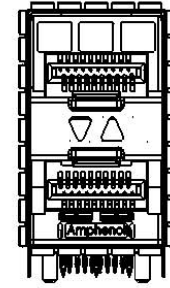
2 INNER LIGHT PIPES  
UE86-4G1620-20X61



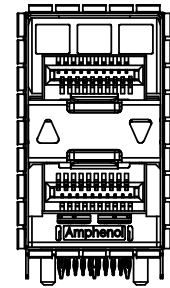
2 OUTER LIGHT PIPES  
UE86-4G1620-30X61



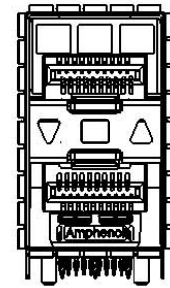
4 LIGHT PIPES UPSIDE DOWN  
UE86-4G1620-40X61



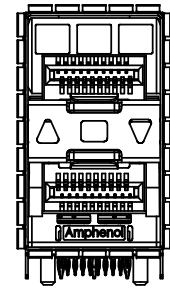
2 INNER LIGHT PIPES UPSIDE DOWN  
UE86-4G1620-50X61



2 OUTER LIGHT PIPES UPSIDE DOWN  
UE86-4G1620-60X61



3 LIGHT PIPES  
UE86-4G1620-70X61



3 LIGHT PIPES UPSIDE DOWN  
UE86-4G1620-80X61

**MATERIAL: (RoHS COMPLIANT)**

1. CAGE - PRESS FIT: COPPER ALLOY (NICKEL SILVER)
2. CONNECTOR - PRESS FIT:  
- PLASTIC HOUSING: LCP, FLAMMABILITY RATING UL94-V0  
- CONTACTS: PHOSPHOR BRONZE
3. LIGHT PIPE: CLEAR POLYCARBONATE, FLAMMABILITY RATING UL94-V0
4. PACKAGING: TRAY PACKAGING
5. TEMPERATURE RANGE: -40°C TO +85°C



UNLESS SPECIFIED OTHERWISE		DRAWN	P. TOMA	APR 01/19
DIMENSIONS ARE IN MILLIMETERS		CHECKED	J. SI	APR 01/19
REFERENCE IN PARENTHESSES		M.E. APP'D		
GENERAL TOLERANCES		QA APP'D		
1 DECIMAL PLACE	±0.25	DWG APP'D	J. SI	APR 01/19
2 DECIMAL PLACE	±0.15	MATERIAL AND FINISH	SEE NOTES	
3 DECIMAL PLACE	N/A	REF.	ECN Exxxxx	
ANGULAR DEGREES	±1°	THIRD ANGLE PROJECTION		
ENG. REL. NO.		DO NOT SCALE DRAWING		

**Amphenol High Speed Interconnects**  
 A Division of Amphenol Corp. [www.amphenolcanada.com](http://www.amphenolcanada.com)

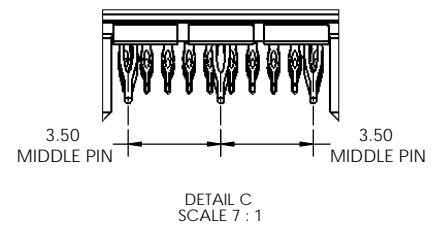
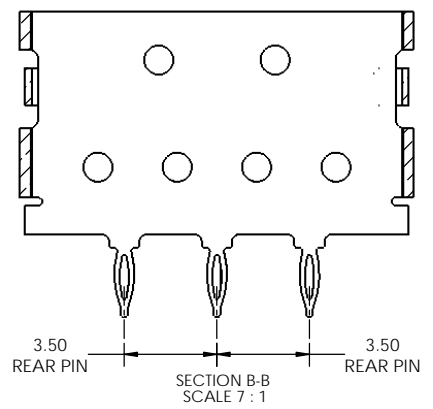
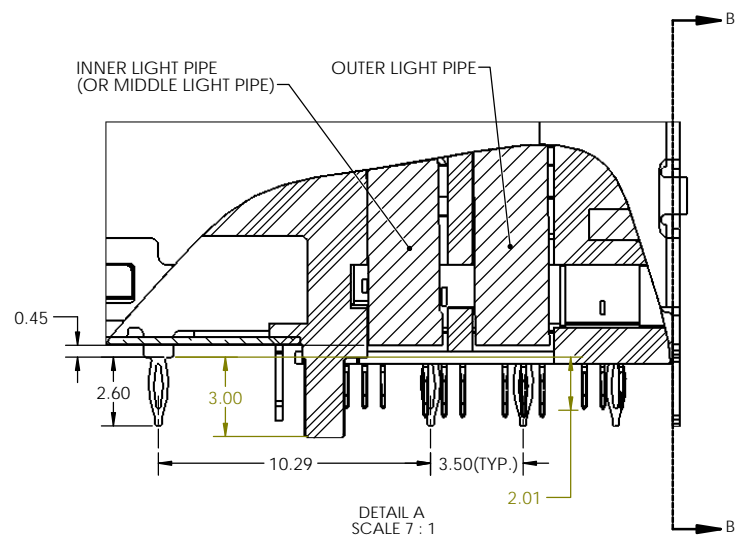
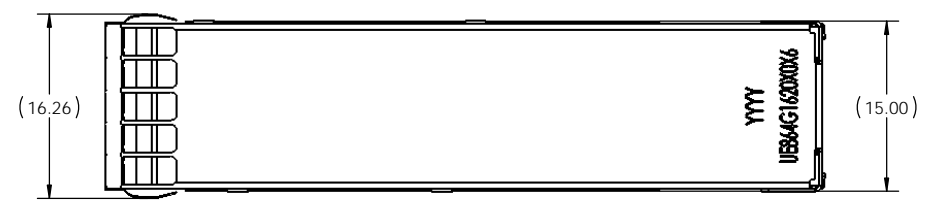
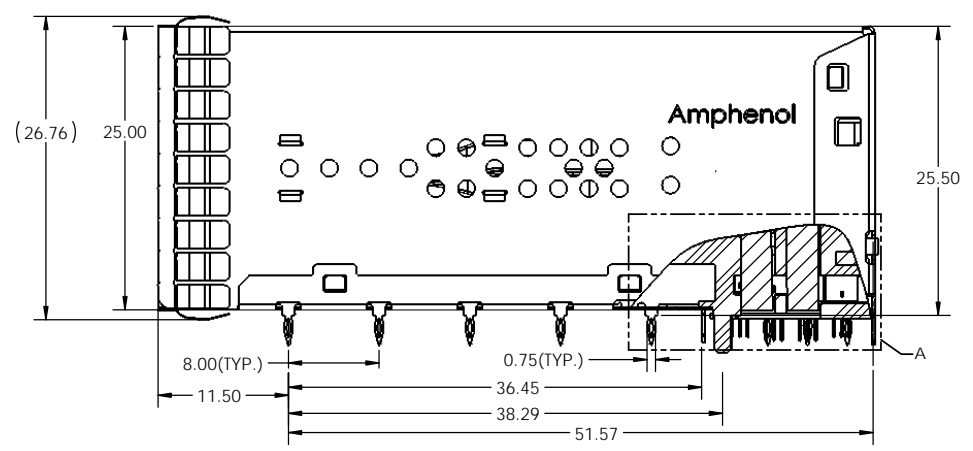
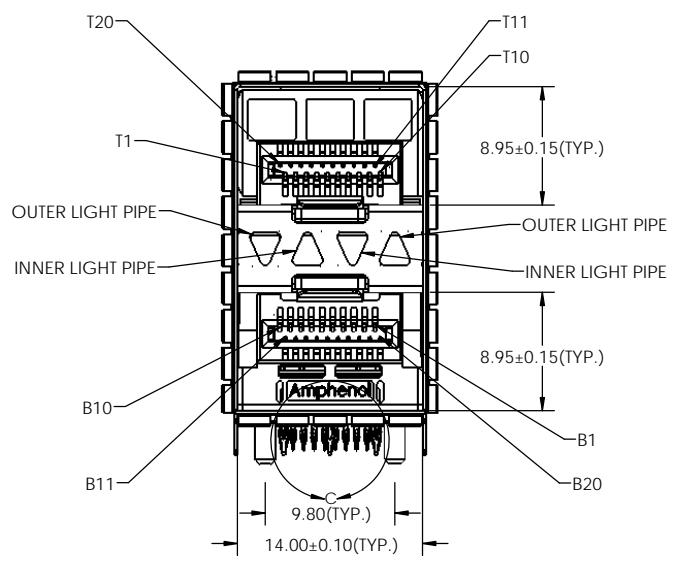
2X1 SFP EXTREMEPORT WITH LIGHT PIPE OPTIONS AND EMI SPRING FINGER

DWG. NO. P-UE86-4G1620-X0X61

REV A

CODE ID NO. 03554 | DWG SIZE: C | SCALE: 2.5:1 | SHEET 1 OF 4

REVISIONS				
REV.	ECN	DESCRIPTION	DATE	APPROVED
-	-	-	-	-
-	-	-	-	-
A		PROPOSAL	APR 01/19	J.SI



THIS DOCUMENT CONTAINS PROPRIETARY INFORMATION AND SUCH INFORMATION MAY NOT BE DISCLOSED TO OTHERS FOR ANY PURPOSE OR USED FOR MANUFACTURING PURPOSES WITHOUT WRITTEN PERMISSION FROM AMPHENOL CANADA CORP.

UNLESS SPECIFIED OTHERWISE	DRAWN	P. TOMA	APR 01/19
DIMENSIONS ARE IN MILLIMETERS	CHECKED	J. SI	APR 01/19
REFERENCE IN PARENTHESES	ME APP'D		
GENERAL TOLERANCES	QA APP'D		
1 DECIMAL PLACE ±0.25	DWG APP'D	J. SI	APR 01/19
2 DECIMAL PLACE ±0.15	MATERIAL AND FINISH	SEE NOTES	
3 DECIMAL PLACE N/A	REF.	ECN Exxxxx	
ANGULAR DEGREES ±1°	THIRD ANGLE PROJECTION	DO NOT SCALE DRAWING	
ENG. REL. NO.			

**Amphenol High Speed Interconnects**  
 A Division of Amphenol Corp. www.amphenolcanada.com

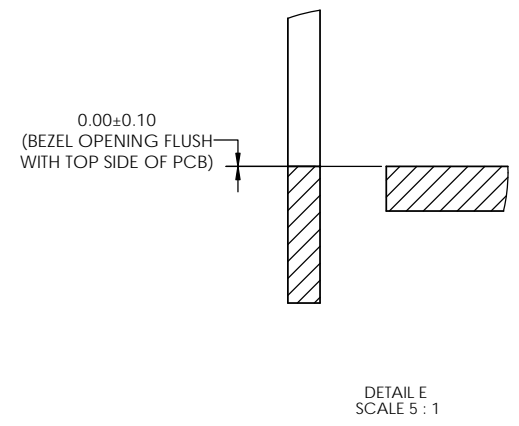
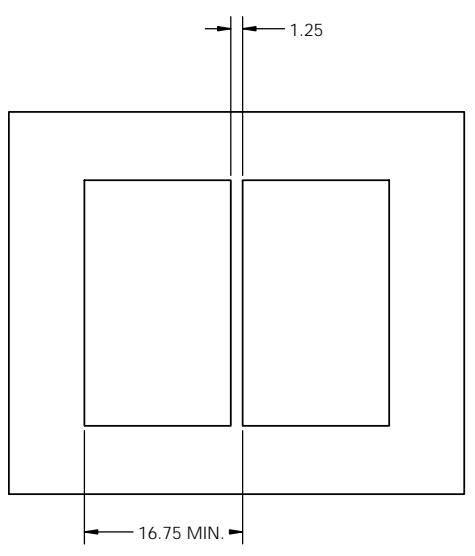
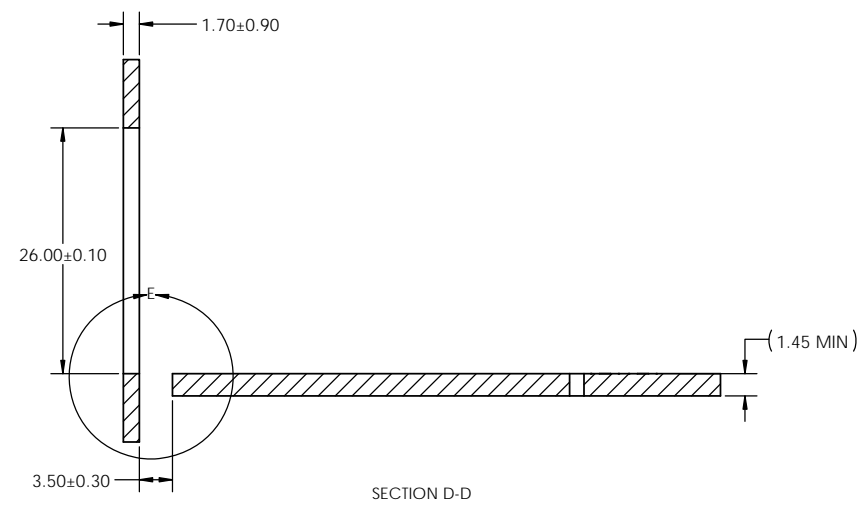
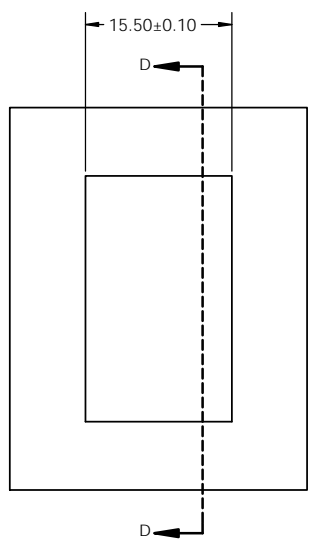
2X1 SFP EXTREMEPORT WITH LIGHT PIPE OPTIONS AND EMI SPRING FINGER

DWG. NO. P-UE86-4G1620-X0X61

REV A

CODE ID NO. 03554 DWG SIZE: C SCALE: 3:1 SHEET 2 OF 4

REVISIONS				
REV.	ECN	DESCRIPTION	DATE	APPROVED
-	-	-	-	-
-	-	-	-	-
A		PROPOSAL	APR 01/19	J.SI



THIS DOCUMENT CONTAINS PROPRIETARY INFORMATION AND SUCH INFORMATION MAY NOT BE DISCLOSED TO OTHERS FOR ANY PURPOSE OR USED FOR MANUFACTURING PURPOSES WITHOUT WRITTEN PERMISSION FROM AMPHENOL CANADA CORP.

UNLESS SPECIFIED OTHERWISE		DRAWN	P. TOMA	APR 01/19
DIMENSIONS ARE IN MILLIMETERS		CHECKED	J. SI	APR 01/19
REFERENCE IN PARENTHESES		ME APP'D		
GENERAL TOLERANCES		QA APP'D		
1 DECIMAL PLACE	±0.25	DWG APP'D	J. SI	APR 01/19
2 DECIMAL PLACE	±0.15	MATERIAL AND FINISH	SEE NOTES	
3 DECIMAL PLACE	N/A	REF.	ECN Exxxxx	
ANGULAR DEGREES	±1°	THIRD ANGLE PROJECTION		
ENG. REL. NO.		DO NOT SCALE DRAWING		

**Amphenol High Speed Interconnects**  
A Division of Amphenol Corp. [www.amphenolcanada.com](http://www.amphenolcanada.com)

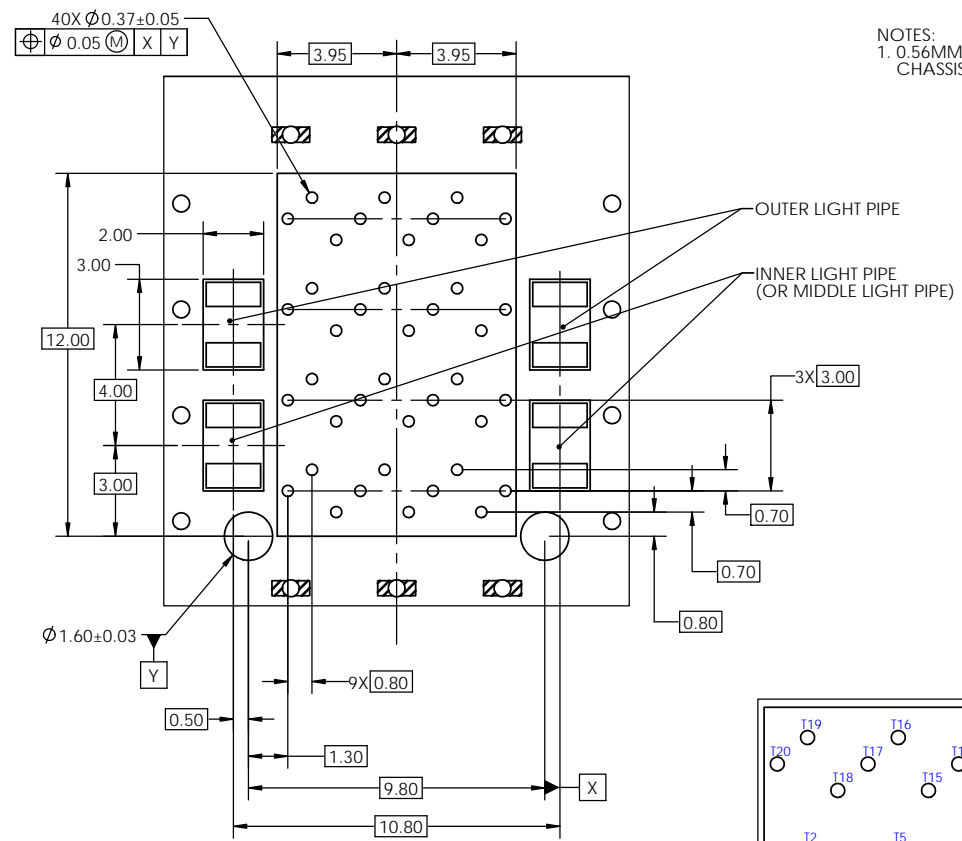
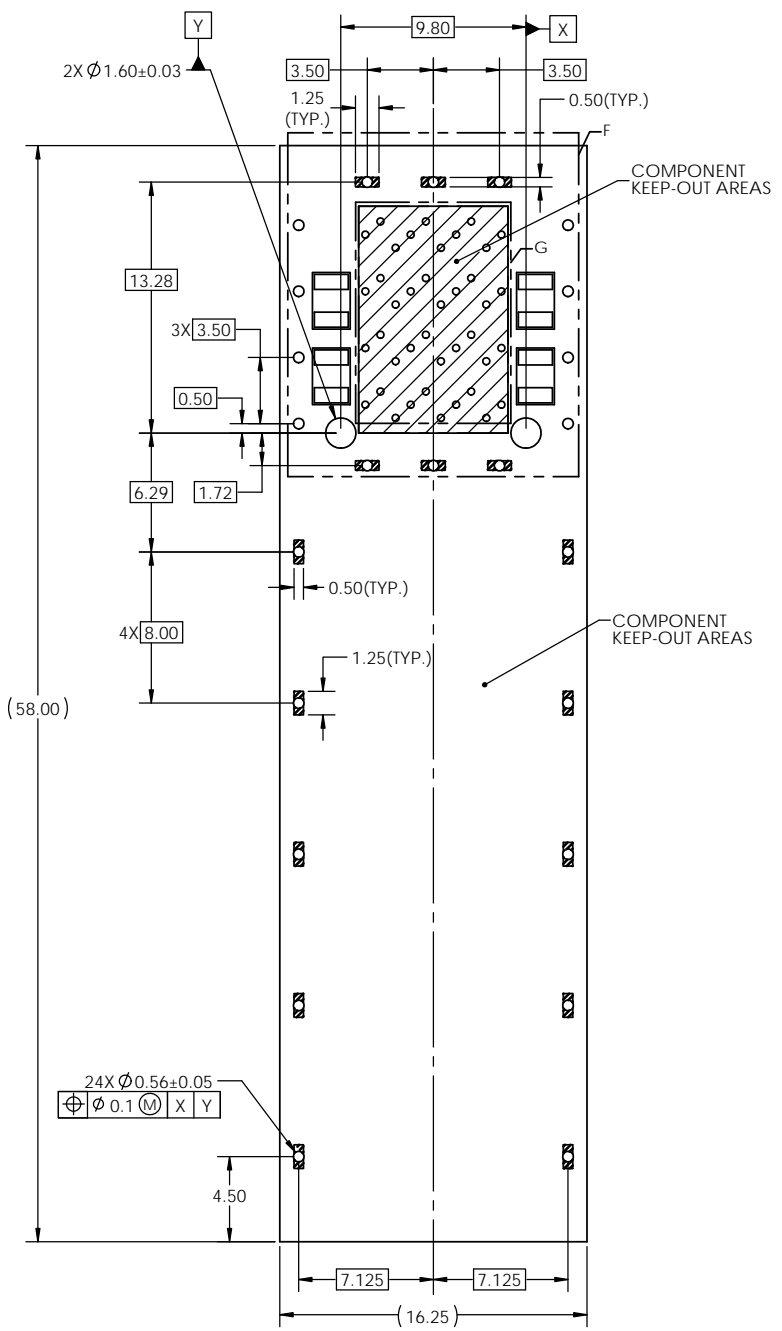
2X1 SFP EXTREMEPORT WITH LIGHT PIPE  
OPTIONS AND EMI SPRING FINGER

DWG. NO. P-UE86-4G1620-X0X61

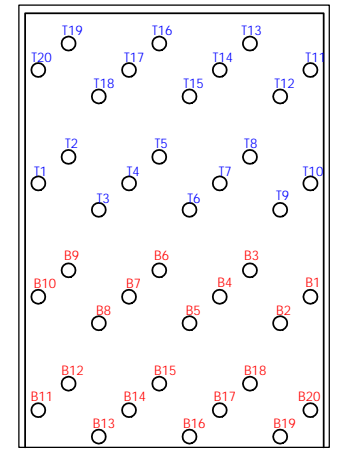
REV A

CODE ID NO. 03554 | DWG SIZE: C | SCALE: 2.5:1 | SHEET 3 OF 4

REVISIONS				
REV.	ECN	DESCRIPTION	DATE	APPROVED
-	-	-	-	-
-	-	-	-	-
A		PROPOSAL	APR 01/19	J.SI



NOTES:  
1. 0.56MM DIAMETER HOLES ARE CHASSIS GROUND (24 HOLES)



### 2X1 PCB LAYOUT

DETAIL F  
SCALE 8 : 1

DETAIL G  
SCALE 10 : 1

THIS DOCUMENT CONTAINS PROPRIETARY INFORMATION AND SUCH INFORMATION MAY NOT BE DISCLOSED TO OTHERS FOR ANY PURPOSE OR USED FOR MANUFACTURING PURPOSES WITHOUT WRITTEN PERMISSION FROM AMPHENOL CANADA CORP.

UNLESS SPECIFIED OTHERWISE	DRAWN	P. TOMA	APR 01/19
DIMENSIONS ARE IN MILLIMETERS	CHECKED	J. SI	APR 01/19
REFERENCE IN PARENTHESES	ME APP'D		
GENERAL TOLERANCES	QA APP'D		
1 DECIMAL PLACE ±0.25	DWG APP'D	J. SI	APR 01/19
2 DECIMAL PLACE ±0.15	MATERIAL AND FINISH	SEE NOTES	
3 DECIMAL PLACE N/A	REF.	ECN Exxxxx	
ANGULAR DEGREES ±1°	THIRD ANGLE PROJECTION	DO NOT SCALE DRAWING	
ENG. REL. NO.			

**Amphenol High Speed Interconnects**  
A Division of Amphenol Corp. [www.amphenolcanada.com](http://www.amphenolcanada.com)

2X1 SFP EXTREMEPORT WITH LIGHT PIPE OPTIONS AND EMI SPRING FINGER

DWG. NO. P-UE86-4G1620-X0X61

REV D

CODE ID NO. 03554 | DWG SIZE: C | SCALE: 2.5:1 | SHEET 4 OF 4