

1 2 3 4 5 6

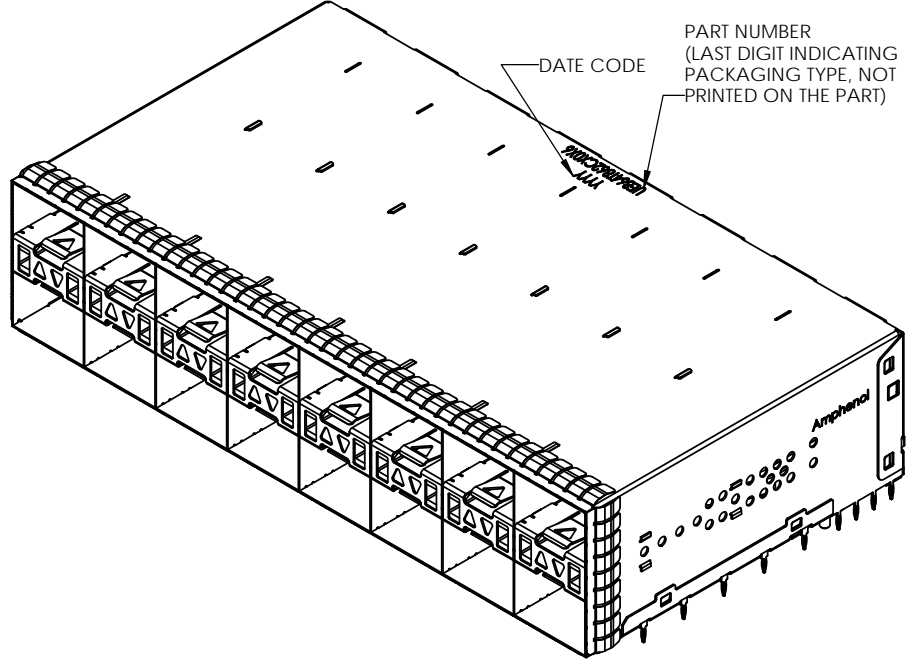
AMPHENOL PART NUMBER CONFIGURATION
UE86-4T8620-X0X61

LIGHT PIPE OPTION
 0 - NO LIGHT PIPE
 2 - 2 INNER LP PER 2X1, NORMAL ORIENTATION
 5 - 2 INNER LP PER 2X1, REVERSING ORIENTATION

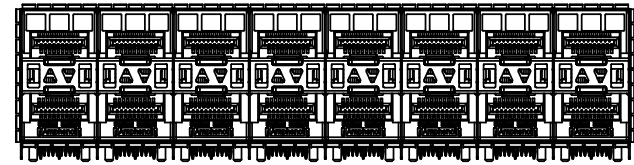
PACKAGING
 1 - TRAY PACKAGING (STACKED)

PLATING OPTIONS FOR CONNECTOR
 2 - 30µ" GOLD PLATING ON MATING AREA
 15-100µ" MATTE TIN ON TERMINATION
 3 - 30µ" GOLD PLATING ON MATING AREA
 150-300µ" MATTE TIN ON TERMINATION
 5 - 15µ" GOLD PLATING ON MATING AREA
 15-100µ" MATTE TIN ON TERMINATION
 6 - 15µ" GOLD PLATING ON MATING AREA
 150-300µ" MATTE TIN ON TERMINATION

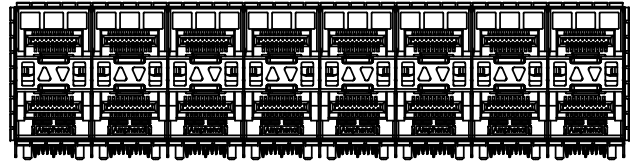
REVISIONS				
REV.	ECN	DESCRIPTION	DATE	APPROVED
A		PROPOSAL	MAR 29/19	J.SI
-		-	-	-



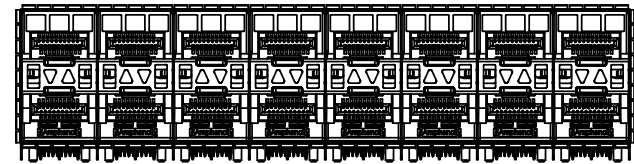
PART NUMBER (LAST DIGIT INDICATING PACKAGING TYPE, NOT PRINTED ON THE PART)



NO LIGHT PIPES
 UE86-4T8620-00X61



2 INNER LIGHT PIPES
 UE86-4T8620-20X61



2 INNER LIGHT PIPES UPSIDE DOWN
 UE86-4T8620-50X61

MATERIAL: (RoHS COMPLIANT)

- CAGE - PRESS FIT: COPPER ALLOY (NICKEL SILVER)
- CONNECTOR - PRESS FIT:
 - PLASTIC HOUSING: LCP, FLAMMABILITY RATING UL94-V0
 - CONTACTS: PHOSPHOR BRONZE
- LIGHT PIPE: CLEAR POLYCARBONATE, FLAMMABILITY RATING UL94-V0
- PACKAGING: TRAY PACKAGING
- TEMPERATURE RANGE: -40°C TO +85°C



THIS DOCUMENT CONTAINS PROPRIETARY INFORMATION AND SUCH INFORMATION MAY NOT BE DISCLOSED TO OTHERS FOR ANY PURPOSE OR USED FOR MANUFACTURING PURPOSES WITHOUT WRITTEN PERMISSION FROM AMPHENOL CANADA CORP.

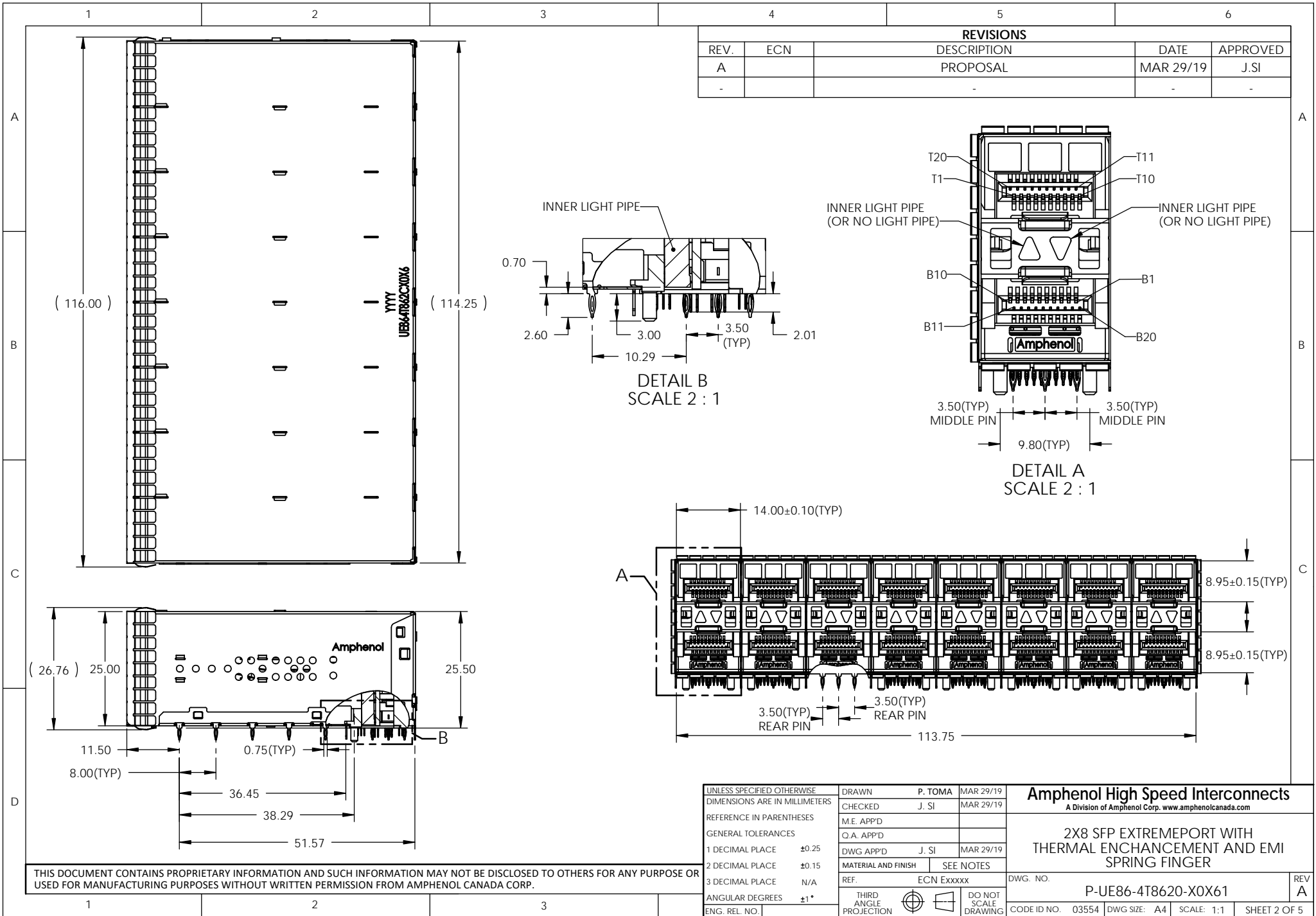
UNLESS SPECIFIED OTHERWISE	DRAWN	P. TOMA	MAR 29/19
DIMENSIONS ARE IN MILLIMETERS	CHECKED	J. SI	MAR 29/19
REFERENCE IN PARENTHESES	M.E. APP'D		
GENERAL TOLERANCES	Q.A. APP'D		
1 DECIMAL PLACE ±0.25	DWG APP'D	J. SI	MAR 29/19
2 DECIMAL PLACE ±0.15	MATERIAL AND FINISH	SEE NOTES	
3 DECIMAL PLACE N/A	REF.	ECN Exxxxx	
ANGULAR DEGREES ±1°	THIRD ANGLE PROJECTION		
ENG. REL. NO.	DO NOT SCALE DRAWING		

Amphenol High Speed Interconnects
 A Division of Amphenol Corp. www.amphenolcanada.com

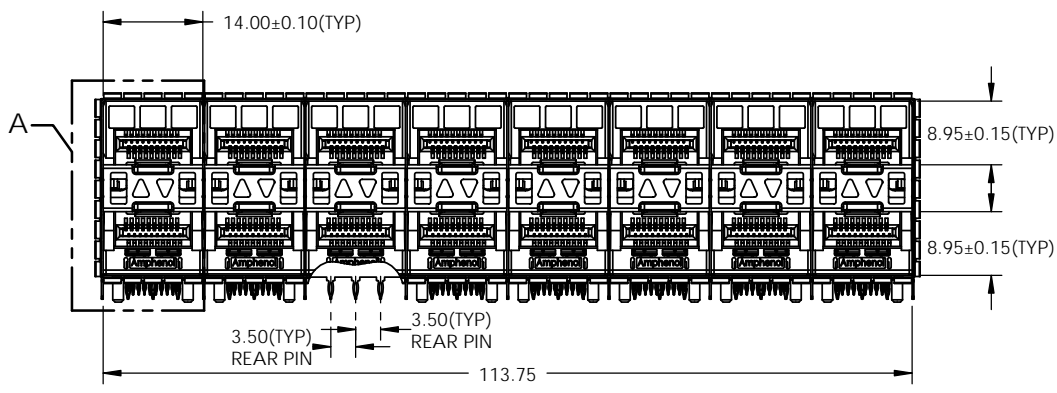
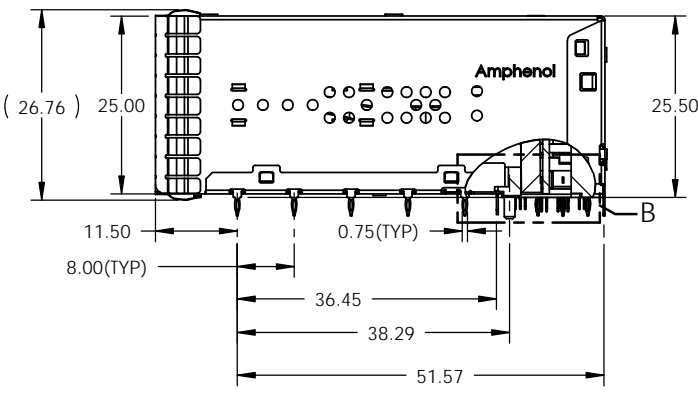
2X8 SFP EXTREMEPORT WITH THERMAL ENHANCEMENT AND EMI SPRING FINGER

DWG. NO.	P-UE86-4T8620-X0X61	REV	A
CODE ID NO.	03554	DWG SIZE:	A4
SCALE:	2:3	SHEET 1 OF 5	

1 2 3 4 5 6



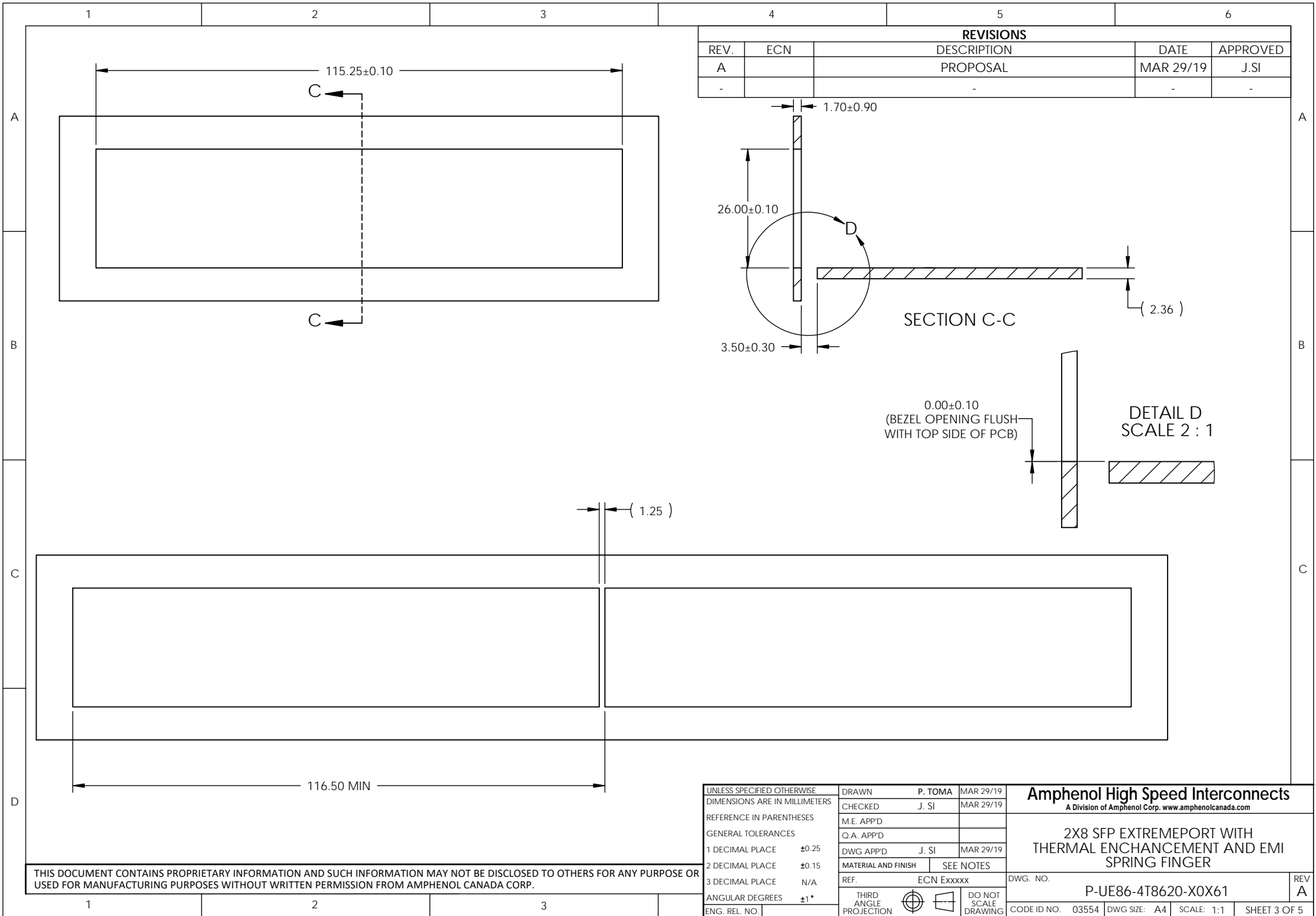
REVISIONS				
REV.	ECN	DESCRIPTION	DATE	APPROVED
A		PROPOSAL	MAR 29/19	J.SI
-		-	-	-



THIS DOCUMENT CONTAINS PROPRIETARY INFORMATION AND SUCH INFORMATION MAY NOT BE DISCLOSED TO OTHERS FOR ANY PURPOSE OR USED FOR MANUFACTURING PURPOSES WITHOUT WRITTEN PERMISSION FROM AMPHENOL CANADA CORP.

UNLESS SPECIFIED OTHERWISE	DRAWN	P. TOMA	MAR 29/19
DIMENSIONS ARE IN MILLIMETERS	CHECKED	J. SI	MAR 29/19
REFERENCE IN PARENTHESES	M.E. APP'D		
GENERAL TOLERANCES	Q.A. APP'D		
1 DECIMAL PLACE ±0.25	DWG APP'D	J. SI	MAR 29/19
2 DECIMAL PLACE ±0.15	MATERIAL AND FINISH	SEE NOTES	
3 DECIMAL PLACE N/A	REF.	ECN Exxxxx	
ANGULAR DEGREES ±1°	THIRD ANGLE PROJECTION		
ENG. REL. NO.			

Amphenol High Speed Interconnects			
A Division of Amphenol Corp. www.amphenolcanada.com			
2X8 SFP EXTREMEPORT WITH THERMAL ENHANCEMENT AND EMI SPRING FINGER			
DWG. NO.	P-UE86-4T8620-XOX61		REV A
CODE ID NO.	03554	DWG SIZE: A4	SCALE: 1:1 SHEET 2 OF 5



REVISIONS				
REV.	ECN	DESCRIPTION	DATE	APPROVED
A		PROPOSAL	MAR 29/19	J.SI
-		-	-	-

UNLESS SPECIFIED OTHERWISE		DRAWN	P. TOMA	MAR 29/19
DIMENSIONS ARE IN MILLIMETERS		CHECKED	J. SI	MAR 29/19
REFERENCE IN PARENTHESES		M.E. APP'D		
GENERAL TOLERANCES		Q.A. APP'D		
1 DECIMAL PLACE	±0.25	DWG APP'D	J. SI	MAR 29/19
2 DECIMAL PLACE	±0.15	MATERIAL AND FINISH	SEE NOTES	
3 DECIMAL PLACE	N/A	REF.	ECN Exxxxx	
ANGULAR DEGREES	±1°	THIRD ANGLE PROJECTION		
ENG. REL. NO.		DO NOT SCALE DRAWING		

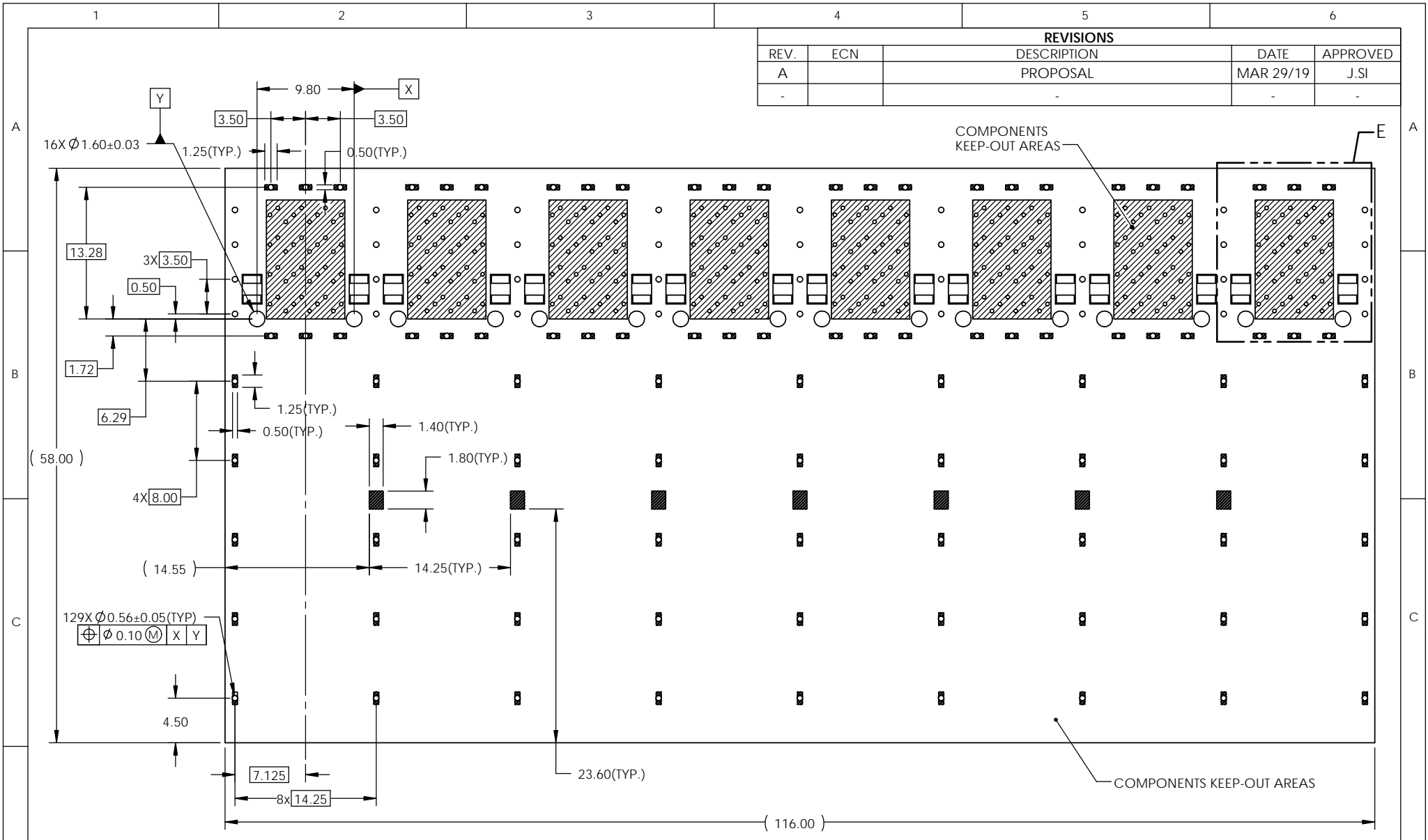
Amphenol High Speed Interconnects
 A Division of Amphenol Corp. www.amphenolcanada.com

2X8 SFP EXTREMEPORT WITH THERMAL ENHANCEMENT AND EMI SPRING FINGER

DWG. NO. P-UE86-4T8620-X0X61 REV A

CODE ID NO. 03554 DWG SIZE: A4 SCALE: 1:1 SHEET 3 OF 5

THIS DOCUMENT CONTAINS PROPRIETARY INFORMATION AND SUCH INFORMATION MAY NOT BE DISCLOSED TO OTHERS FOR ANY PURPOSE OR USED FOR MANUFACTURING PURPOSES WITHOUT WRITTEN PERMISSION FROM AMPHENOL CANADA CORP.



REVISIONS				
REV.	ECN	DESCRIPTION	DATE	APPROVED
A		PROPOSAL	MAR 29/19	J.SI
-		-	-	-

NOTES:
 1. 0.56 mm DIAMETER HOLES ARE CHASSIS GROUND (129HOLES).

2X8 PCB LAYOUT

UNLESS SPECIFIED OTHERWISE	DRAWN	P. TOMA	MAR 29/19
DIMENSIONS ARE IN MILLIMETERS	CHECKED	J. SI	MAR 29/19
REFERENCE IN PARENTHESES	M.E. APP'D		
GENERAL TOLERANCES	Q.A. APP'D		
1 DECIMAL PLACE ±0.25	DWG APP'D	J. SI	MAR 29/19
2 DECIMAL PLACE ±0.15	MATERIAL AND FINISH	SEE NOTES	
3 DECIMAL PLACE N/A	REF.	ECN Exxxxx	
ANGULAR DEGREES ±1°	THIRD ANGLE PROJECTION		
ENG. REL. NO.	DO NOT SCALE DRAWING		

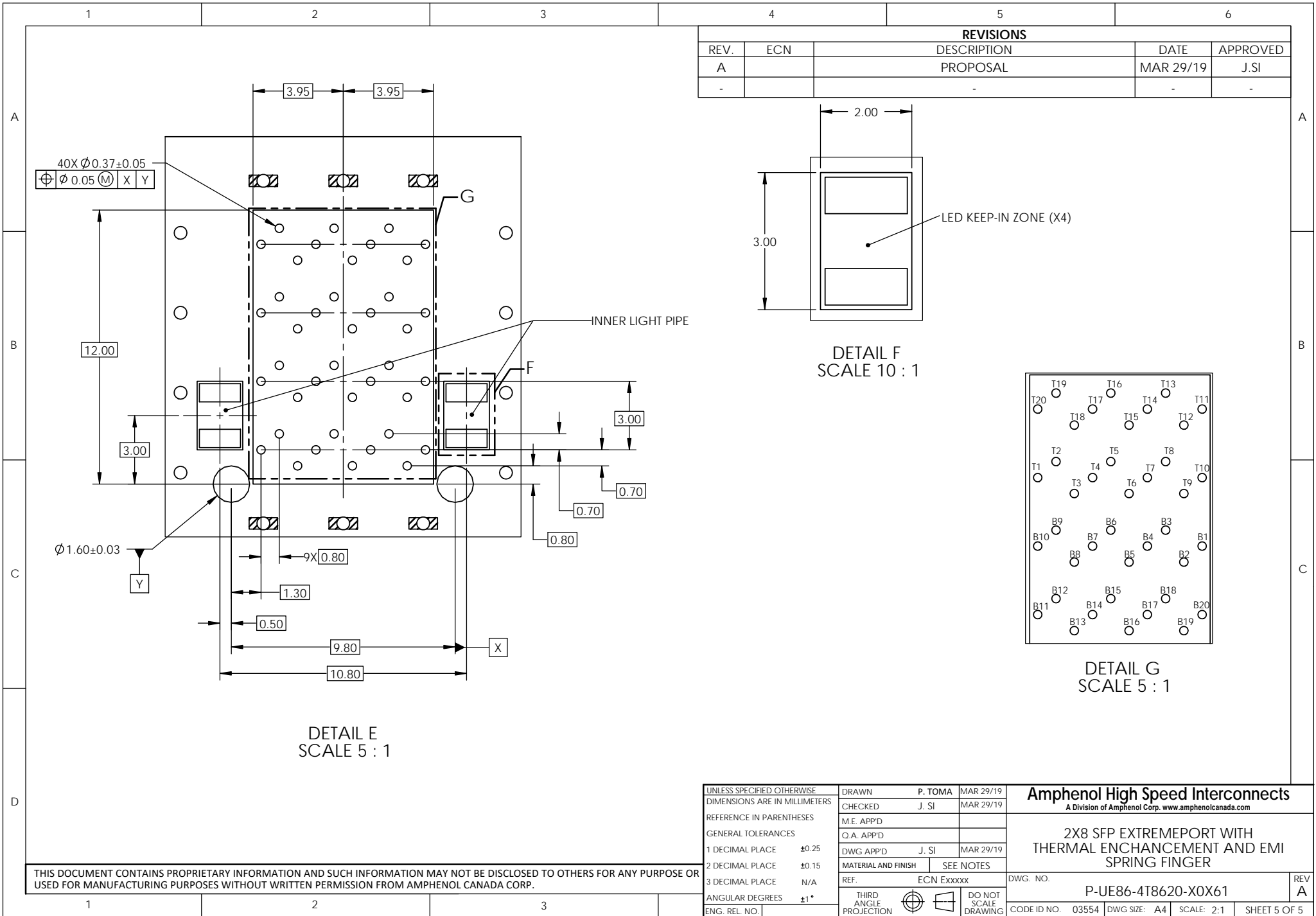
Amphenol High Speed Interconnects
 A Division of Amphenol Corp. www.amphenolcanada.com

2X8 SFP EXTREMEPORT WITH THERMAL ENHANCEMENT AND EMI SPRING FINGER

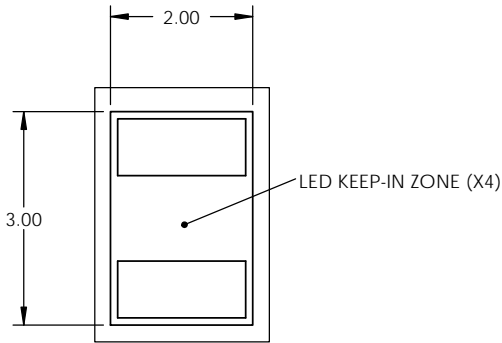
DWG. NO. P-UE86-4T8620-XOX61 REV A

CODE ID NO. 03554 DWG SIZE: A4 SCALE: 2:1 SHEET 4 OF 5

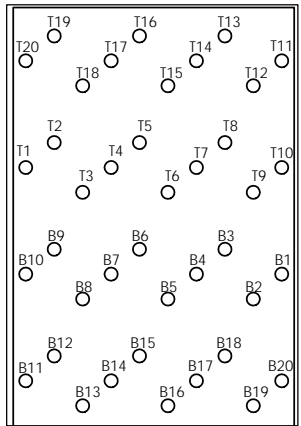
THIS DOCUMENT CONTAINS PROPRIETARY INFORMATION AND SUCH INFORMATION MAY NOT BE DISCLOSED TO OTHERS FOR ANY PURPOSE OR USED FOR MANUFACTURING PURPOSES WITHOUT WRITTEN PERMISSION FROM AMPHENOL CANADA CORP.



REVISIONS				
REV.	ECN	DESCRIPTION	DATE	APPROVED
A		PROPOSAL	MAR 29/19	J.SI
-		-	-	-



DETAIL F
SCALE 10 : 1



DETAIL G
SCALE 5 : 1

THIS DOCUMENT CONTAINS PROPRIETARY INFORMATION AND SUCH INFORMATION MAY NOT BE DISCLOSED TO OTHERS FOR ANY PURPOSE OR USED FOR MANUFACTURING PURPOSES WITHOUT WRITTEN PERMISSION FROM AMPHENOL CANADA CORP.

UNLESS SPECIFIED OTHERWISE	DRAWN	P. TOMA	MAR 29/19
DIMENSIONS ARE IN MILLIMETERS	CHECKED	J. SI	MAR 29/19
REFERENCE IN PARENTHESES	M.E. APP'D		
GENERAL TOLERANCES	Q.A. APP'D		
1 DECIMAL PLACE ±0.25	DWG APP'D	J. SI	MAR 29/19
2 DECIMAL PLACE ±0.15	MATERIAL AND FINISH	SEE NOTES	
3 DECIMAL PLACE N/A	REF.	ECN Exxxxx	
ANGULAR DEGREES ±1°	THIRD ANGLE PROJECTION	DO NOT SCALE DRAWING	
ENG. REL. NO.			

Amphenol High Speed Interconnects A Division of Amphenol Corp. www.amphenolcanada.com			
2X8 SFP EXTREMEPORT WITH THERMAL ENCHANCEMENT AND EMI SPRING FINGER			
DWG. NO.	P-UE86-4T8620-XOX61		REV A
CODE ID NO.	03554	DWG SIZE: A4	SCALE: 2:1 SHEET 5 OF 5