

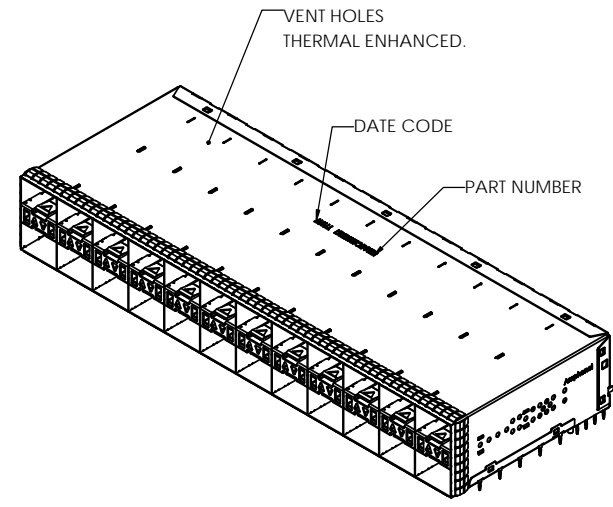
REVISIONS				
REV.	ECN	DESCRIPTION	DATE	APPROVED
C		DWG VIEW CHANGED	28-MAR-19	J.SI
B		DWG VIEW REVISED	26-MAR-19	J.SI
A		PROPOSAL	22-MAR-19	J. SI

AMPHENOL PART NUMBER CONFIGURATION
 UE86-4TC620-X0X61

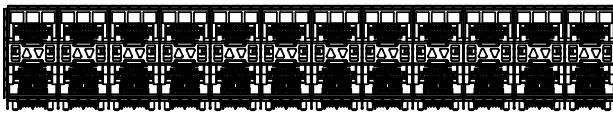
LIGHT PIPE OPTION
 0 - NO LIGHT PIPE
 2 - 2 INNER LP PER 2X1, NORMAL ORIENTATION
 5 - 2 INNER LP PER 2X1, REVERSING ORIENTATION

PACKAGING
 1 - TRAY PACKAGING (STACKED)

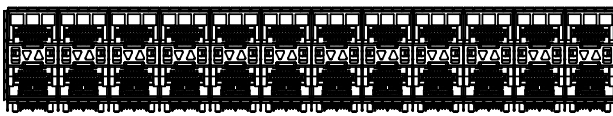
PLATING OPTIONS FOR CONNECTOR
 2 - 30µ" GOLD PLATING ON MATING AREA
 15-100µ" MATTE TIN ON TERMINATION
 3 - 30µ" GOLD PLATING ON MATING AREA
 150-300µ" MATTE TIN ON TERMINATION
 5 - 15µ" GOLD PLATING ON MATING AREA
 15-100µ" MATTE TIN ON TERMINATION
 6 - 15µ" GOLD PLATING ON MATING AREA
 150-300µ" MATTE TIN ON TERMINATION



NO LIGHT PIPES
 UE86-4TC620-00X61



2 INNER LIGHT PIPES
 UE86-4TC620-20X61



2 INNER LIGHT PIPES UPSIDE DOWN
 UE86-4TC620-50X61

MATERIAL: (RoHS COMPLIANT)

- CAGE - PRESS FIT: COPPER ALLOY (NICKEL SILVER)
- CONNECTOR - PRESS FIT:
 - PLASTIC HOUSING: LCP, FLAMMABILITY RATING UL94-V0
 - CONTACTS: PHOSPHOR BRONZE
- LIGHT PIPE: CLEAR POLYCARBONATE, FLAMMABILITY RATING UL94-V0
- PACKAGING: TRAY PACKAGING
- TEMPERATURE RANGE: -40°C TO +85°C

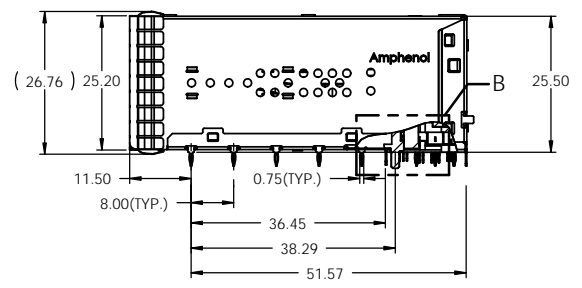
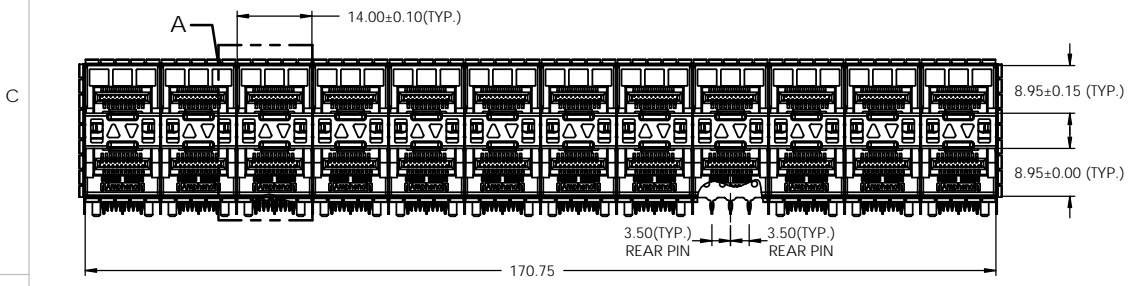
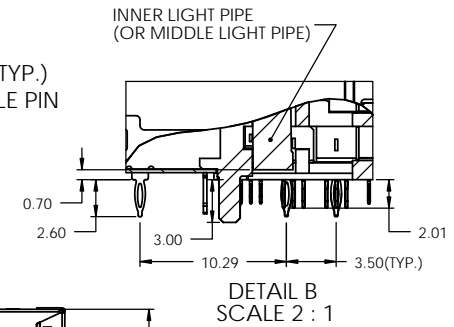
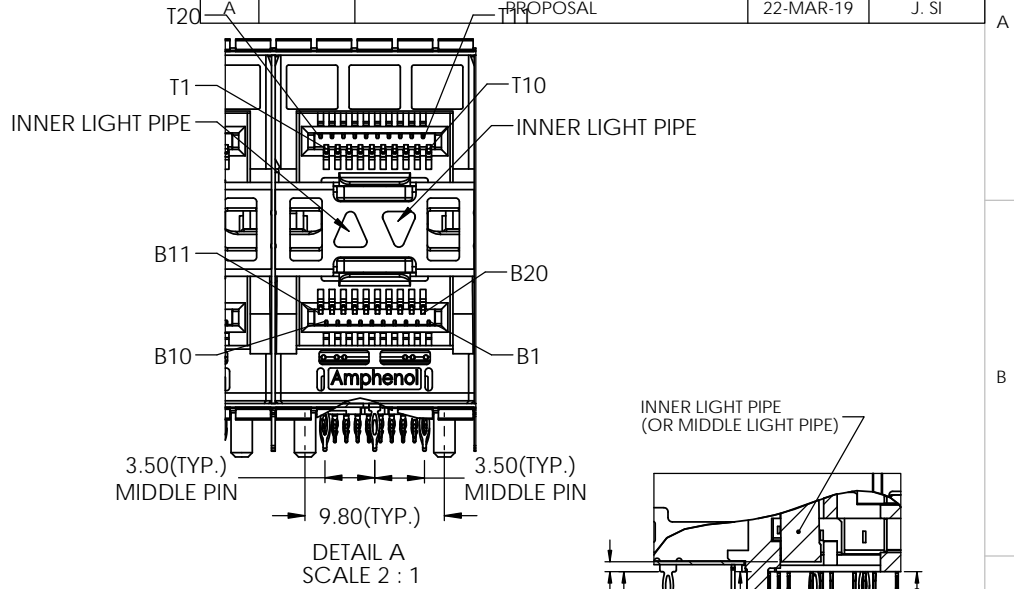
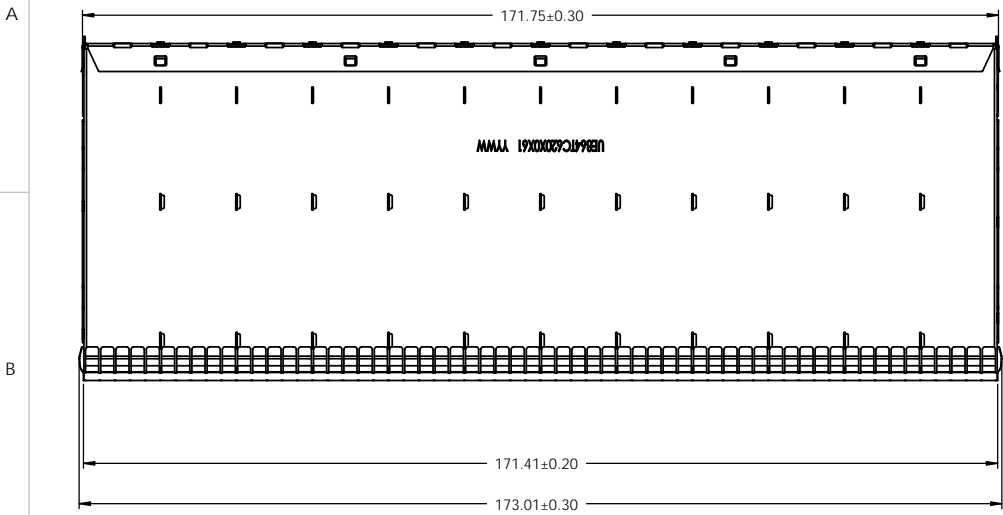


THIS DOCUMENT CONTAINS PROPRIETARY INFORMATION AND SUCH INFORMATION MAY NOT BE DISCLOSED TO OTHERS FOR ANY PURPOSE OR USED FOR MANUFACTURING PURPOSES WITHOUT WRITTEN PERMISSION FROM AMPHENOL CANADA CORP.

UNLESS SPECIFIED OTHERWISE DIMENSIONS ARE IN MILLIMETERS REFERENCE IN PARENTHESES GENERAL TOLERANCES 1 DECIMAL PLACE ±0.38 2 DECIMAL PLACE ±0.25 3 DECIMAL PLACE N/A ANGULAR DEGREES ±1° ENG. REL. NO.	DRAWN	P. TOMA	22-MAR-19	Amphenol High Speed Interconnects A Division of Amphenol Corp. www.amphenolcanada.com
	CHECKED	J. SI	22-MAR-19	
	M.E. APP'D			
	Q.A. APP'D			
	DWG APP'D	J. SI	22-MAR-19	2X12 SFP EXTREMEPORT WITH LIGHT PIPE OPTIONS AND EMI SPRING FINGER
MATERIAL AND FINISH	SEE NOTES			
	REF.	ECN Exxxxx		DWG. NO.
	THIRD ANGLE PROJECTION	DO NOT SCALE DRAWING		P-UE86-4TC620-X0X61
		CODE ID NO.	03554	DWG SIZE: A4
		SCALE:	3:5	SHEET 1 OF 5

1 2 3 4 5 6

REVISIONS				
REV.	ECN	DESCRIPTION	DATE	APPROVED
C		DWG VIEW CHANGED	28-MAR-19	J.SI
B		DWG VIEW REVISED	26-MAR-19	J.SI
A		PROPOSAL	22-MAR-19	J. SI

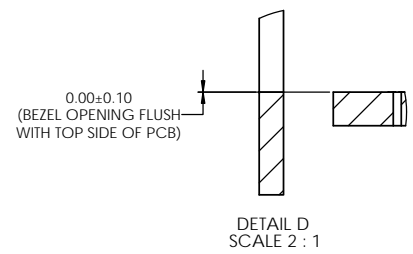
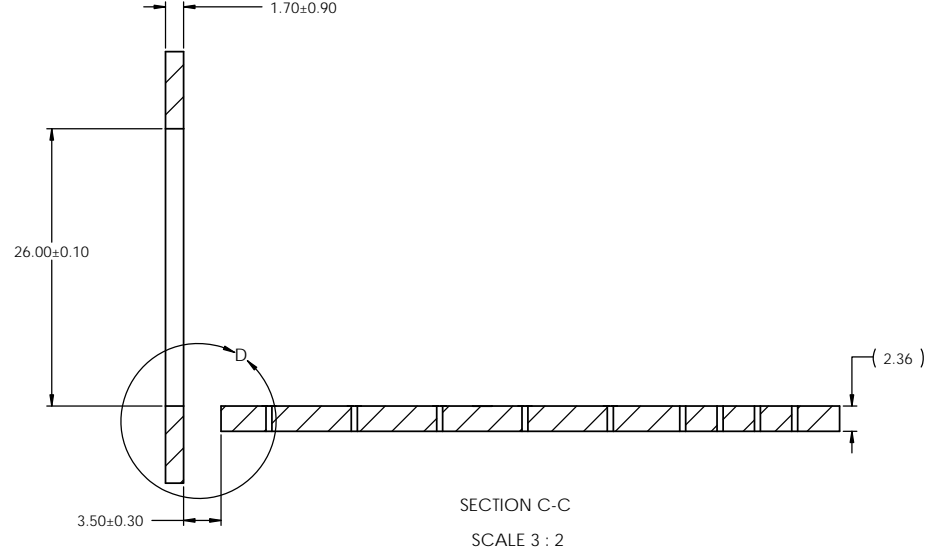
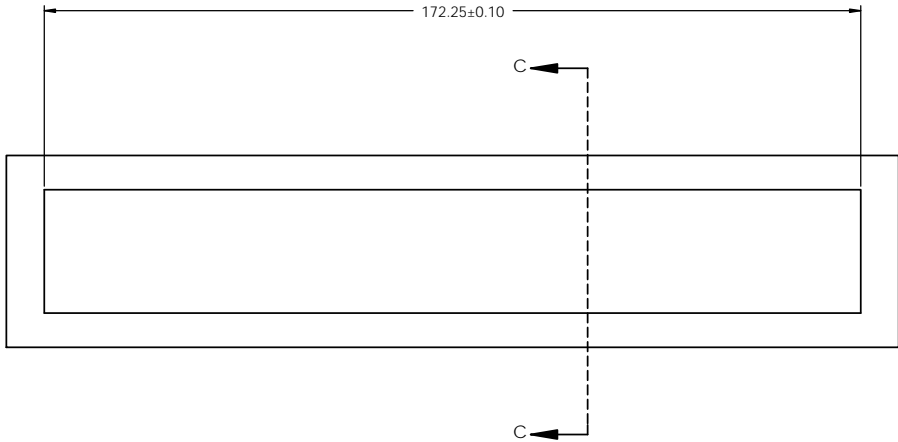


THIS DOCUMENT CONTAINS PROPRIETARY INFORMATION AND SUCH INFORMATION MAY NOT BE DISCLOSED TO OTHERS FOR ANY PURPOSE OR USED FOR MANUFACTURING PURPOSES WITHOUT WRITTEN PERMISSION FROM AMPHENOL CANADA CORP.

UNLESS SPECIFIED OTHERWISE DIMENSIONS ARE IN MILLIMETERS REFERENCE IN PARENTHESES GENERAL TOLERANCES 1 DECIMAL PLACE ±0.38 2 DECIMAL PLACE ±0.25 3 DECIMAL PLACE N/A ANGULAR DEGREES ±1° ENG. REL. NO.	DRAWN	P. TOMA	22-MAR-19	Amphenol High Speed Interconnects A Division of Amphenol Corp. www.amphenolcanada.com 2X12 SFP EXTREMEPORT WITH LIGHT PIPE OPTIONS AND EMI SPRING FINGER	DWG. NO. P-UE86-4TC620-X0X61	REV C	
	CHECKED	J. SI	22-MAR-19				
	M.E. APP'D						
	Q.A. APP'D						
	DWG APP'D	J. SI	22-MAR-19				
MATERIAL AND FINISH	SEE NOTES						
REF.	ECN EXXXXX						
	THIRD ANGLE PROJECTION		DO NOT SCALE DRAWING	CODE ID NO. 03554	DWG SIZE: A4	SCALE: 1:1	SHEET 2 OF 5

1 2 3 4 5 6

REVISIONS				
REV.	ECN	DESCRIPTION	DATE	APPROVED
C		DWG VIEW CHANGED	28-MAR-19	J.SI
B		DWG VIEW REVISED	26-MAR-19	J.SI
A		PROPOSAL	22-MAR-19	J. SI



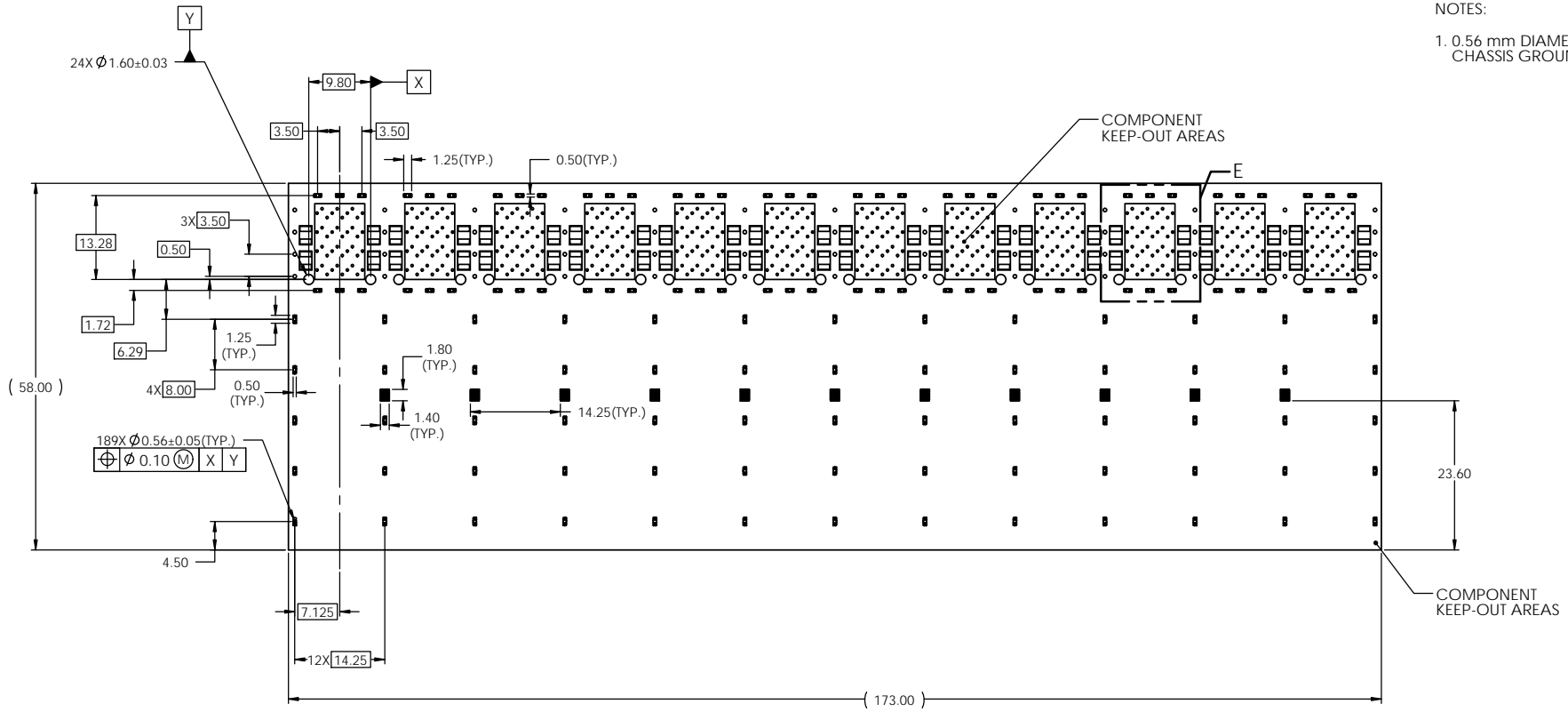
THIS DOCUMENT CONTAINS PROPRIETARY INFORMATION AND SUCH INFORMATION MAY NOT BE DISCLOSED TO OTHERS FOR ANY PURPOSE OR USED FOR MANUFACTURING PURPOSES WITHOUT WRITTEN PERMISSION FROM AMPHENOL CANADA CORP.

UNLESS SPECIFIED OTHERWISE DIMENSIONS ARE IN MILLIMETERS REFERENCE IN PARENTHESES GENERAL TOLERANCES 1 DECIMAL PLACE ±0.38 2 DECIMAL PLACE ±0.25 3 DECIMAL PLACE N/A ANGULAR DEGREES ±1° ENG. REL. NO.	DRAWN	P. TOMA	22-MAR-19	Amphenol High Speed Interconnects A Division of Amphenol Corp. www.amphenolcanada.com 2X12 SFP EXTREMEPORT WITH LIGHT PIPE OPTIONS AND EMI SPRING FINGER	DWG. NO. P-UE86-4TC620-X0X61	REV C	
	CHECKED	J. SI	22-MAR-19				
	M.E. APP'D						
	Q.A. APP'D						
	DWG APP'D	J. SI	22-MAR-19				
	MATERIAL AND FINISH	SEE NOTES					
	REF.	ECN Exxxxx					
	THIRD ANGLE PROJECTION		DO NOT SCALE DRAWING	CODE ID NO. 03554	DWG SIZE: A4	SCALE: 1:1	SHEET 3 OF 5

REVISIONS				
REV.	ECN	DESCRIPTION	DATE	APPROVED
C		DWG VIEW CHANGED	28-MAR-19	J.SI
B		DWG VIEW REVISED	26-MAR-19	J.SI
A		PROPOSAL	22-MAR-19	J. SI

NOTES:

1. 0.56 mm DIAMETER HOLES ARE CHASSIS GROUND (189HOLES).



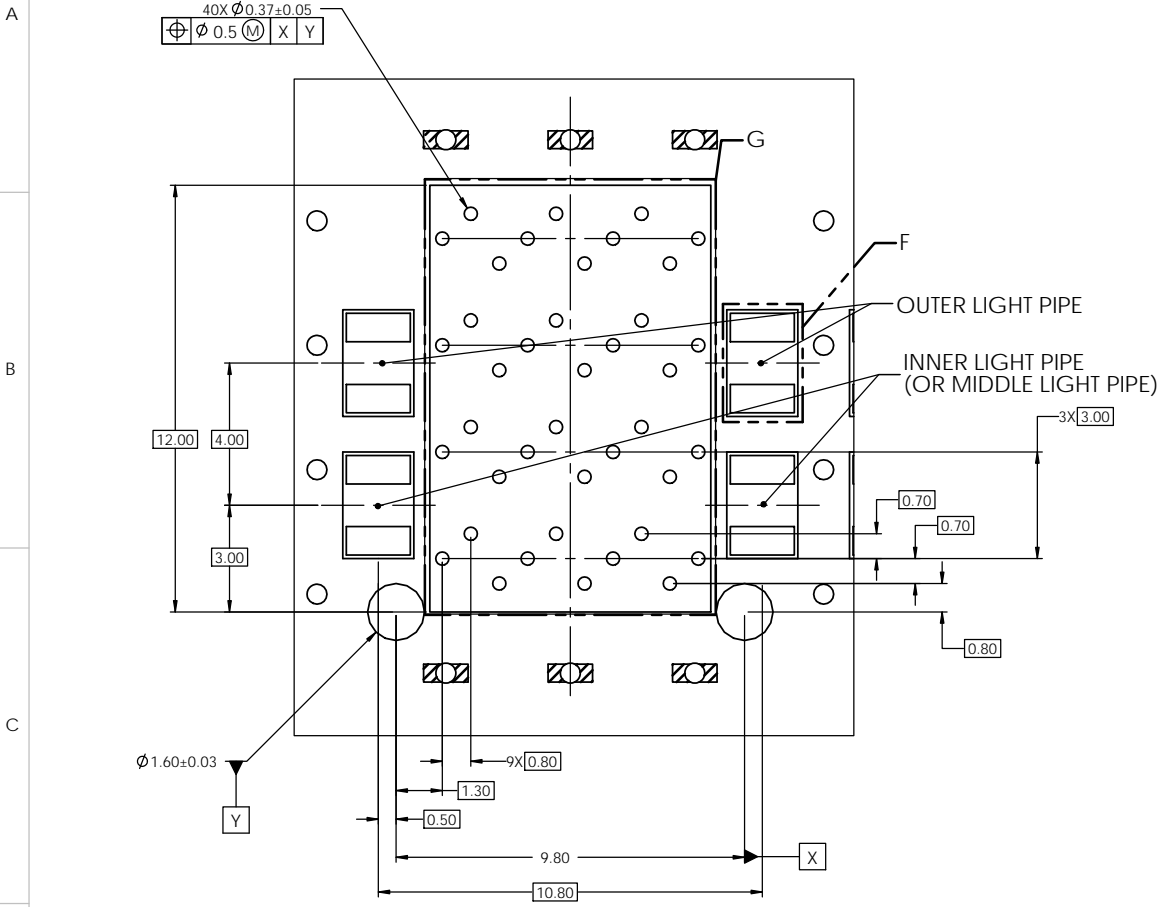
2X12 PCB LAYOUT

THIS DOCUMENT CONTAINS PROPRIETARY INFORMATION AND SUCH INFORMATION MAY NOT BE DISCLOSED TO OTHERS FOR ANY PURPOSE OR USED FOR MANUFACTURING PURPOSES WITHOUT WRITTEN PERMISSION FROM AMPHENOL CANADA CORP.

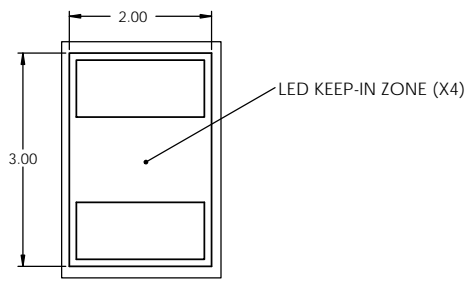
UNLESS SPECIFIED OTHERWISE DIMENSIONS ARE IN MILLIMETERS REFERENCE IN PARENTHESES GENERAL TOLERANCES 1 DECIMAL PLACE ± 0.38 2 DECIMAL PLACE ± 0.25 3 DECIMAL PLACE N/A ANGULAR DEGREES $\pm 1^\circ$ ENG. REL. NO.	DRAWN	P. TOMA	22-MAR-19	Amphenol High Speed Interconnects A Division of Amphenol Corp. www.amphenolcanada.com 2X12 SFP EXTREMEPORT WITH LIGHT PIPE OPTIONS AND EMI SPRING FINGER	DWG. NO. P-UE86-4TC620-X0X61	REV C	
	CHECKED	J. SI	22-MAR-19				
	M.E. APP'D						
	Q.A. APP'D						
	DWG APP'D	J. SI	22-MAR-19				
MATERIAL AND FINISH	SEE NOTES						
REF.	ECN Exxxxx						
	THIRD ANGLE PROJECTION		DO NOT SCALE DRAWING	CODE ID NO. 03554	DWG SIZE: A4	SCALE: 2:1	SHEET 4 OF 5

1 2 3 4 5 6

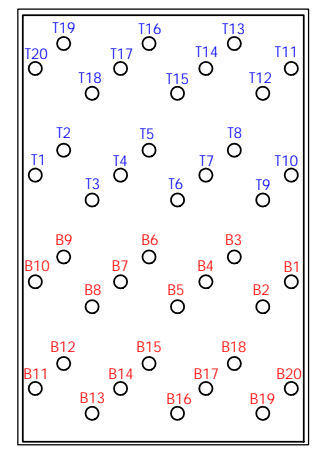
REVISIONS				
REV.	ECN	DESCRIPTION	DATE	APPROVED
C		DWG VIEW CHANGED	28-MAR-19	J.SI
B		DWG VIEW REVISED	26-MAR-19	J.SI
A		PROPOSAL	22-MAR-19	J. SI



DETAIL E
SCALE 5 : 1



DETAIL F
SCALE 10 : 1



DETAIL G
SCALE 5 : 1

THIS DOCUMENT CONTAINS PROPRIETARY INFORMATION AND SUCH INFORMATION MAY NOT BE DISCLOSED TO OTHERS FOR ANY PURPOSE OR USED FOR MANUFACTURING PURPOSES WITHOUT WRITTEN PERMISSION FROM AMPHENOL CANADA CORP.

UNLESS SPECIFIED OTHERWISE DIMENSIONS ARE IN MILLIMETERS REFERENCE IN PARENTHESES GENERAL TOLERANCES 1 DECIMAL PLACE ±0.38 2 DECIMAL PLACE ±0.25 3 DECIMAL PLACE N/A ANGULAR DEGREES ±1° ENG. REL. NO.	DRAWN	P. TOMA	22-MAR-19	Amphenol High Speed Interconnects A Division of Amphenol Corp. www.amphenolcanada.com 2X12 SFP EXTREMEPORT WITH LIGHT PIPE OPTIONS AND EMI SPRING FINGER	DWG. NO. P-UE86-4TC620-X0X61	REV C
	CHECKED	J. SI	22-MAR-19			
	M.E. APP'D					
	Q.A. APP'D					
	DWG APP'D	J. SI	22-MAR-19			
	MATERIAL AND FINISH	SEE NOTES				
	REF.	ECN Exxxxx				
	THIRD ANGLE PROJECTION			DO NOT SCALE DRAWING		
	CODE ID NO.	03554	DWG SIZE: A4	SCALE: 2:1	SHEET 5 OF 5	

1 2 3