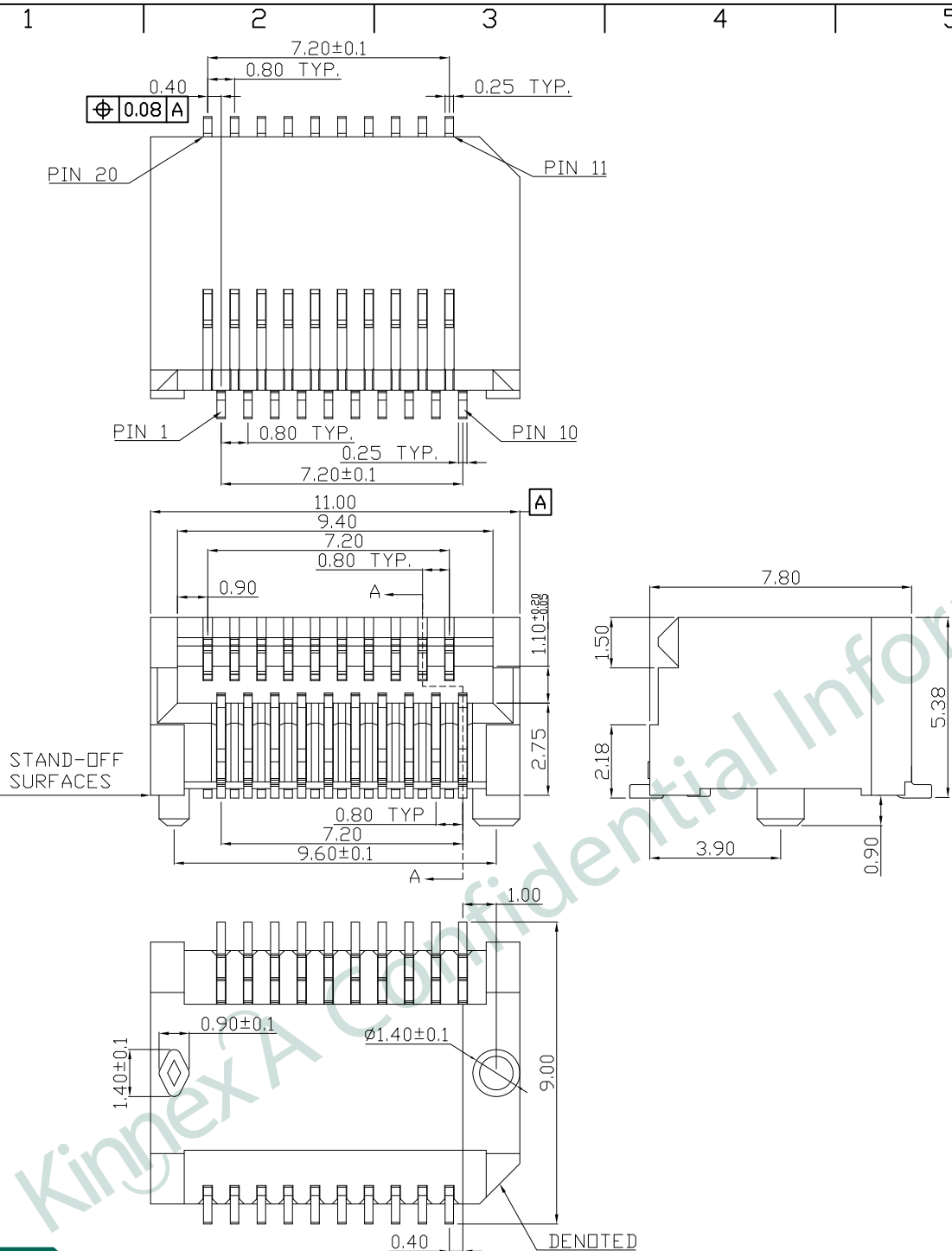


REV.	DATE	DESCRIPTION
01	Jul. 05, '18	1st RELEASE

- NOTES:
- MATERIAL:
 HOUSING: LCP 40% G/F, FILLED, UL94V-0, BLACK
 CONTACT: T=0.25mm PHOS-BRONZE, 15u" GOLD PLATING
 ON CONTACT AREA, MATTE TIN AND NICKEL PLATING
 - CURABILITY TEST: 250 CYCLES MIN.
 - SPECIFICATION:
 DIELECTRIC STRENGTH: AC 300V/MINUTE
 INSULATOR RESISTANCE: 500 Mohm MIN.
 CONTACT RESISTANCE: 35 mohm MAX.
 OPERATING TEMPERATURE: -40°~+85°
 - UNSPECIFIED TOLERANCE: .XXX ±0.15
 .XX ±0.25
 .X ±0.30

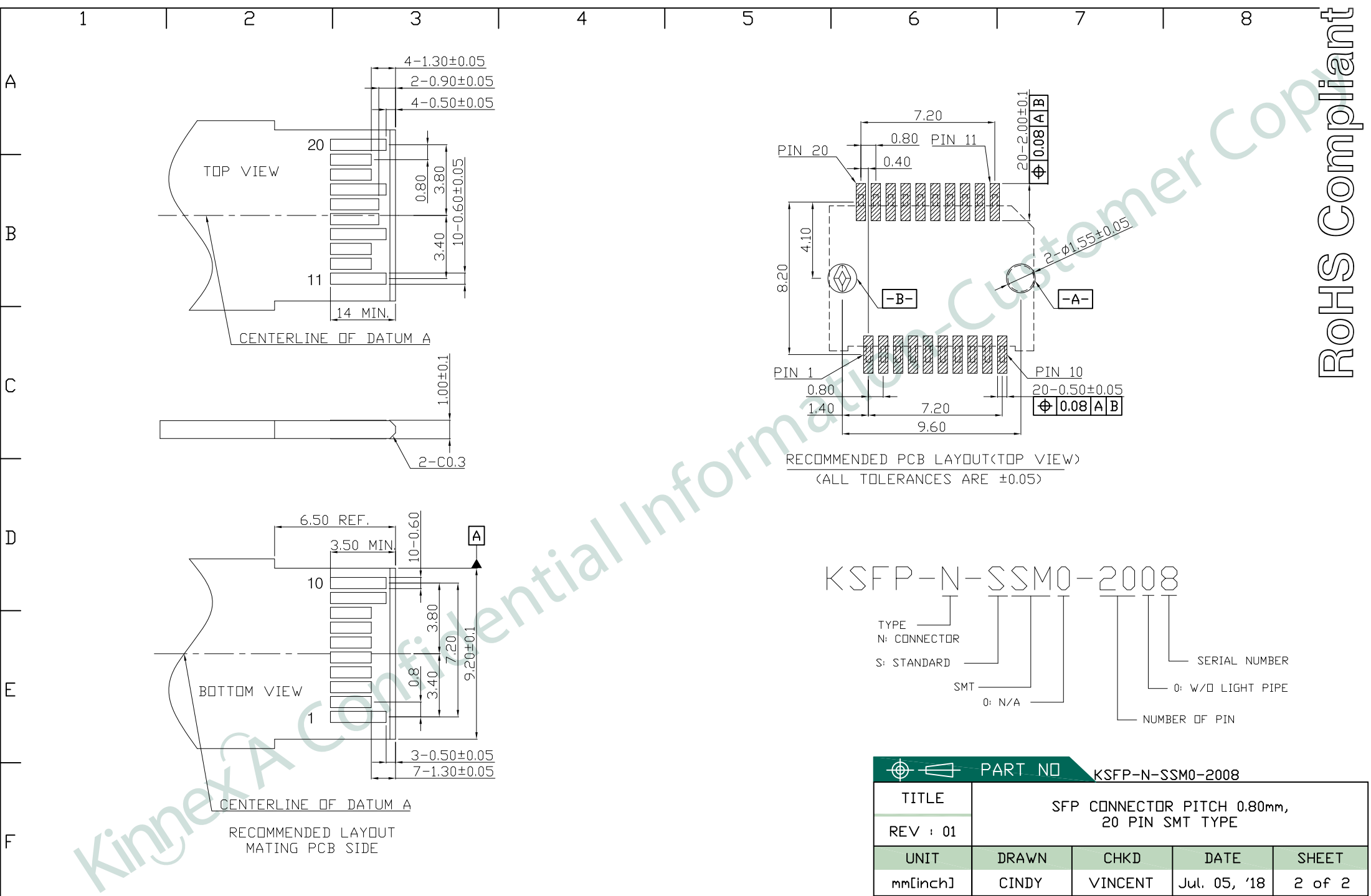


PART NO		KSFP-N-SSM0-2008		
TITLE	SFP CONNECTOR PITCH 0.80mm, 20 PIN SMT TYPE			
REV : 01				
UNIT	DRAWN	CHKD	DATE	SHEET
mm[inch]	CINDY	VINCENT	Jul. 05, '18	1 of 2

DWG NO KSFP-N-SSM0-2008

KinnexA, INC. 8F, No. 172, CHENG TEH ROAD SEC. 4, TAIPEI 11167, TAIWAN





PART NO		KSFP-N-SSM0-2008		
TITLE	SFP CONNECTOR PITCH 0.80mm, 20 PIN SMT TYPE			
REV : 01				
UNIT	DRAWN	CHKD	DATE	SHEET
mm[inch]	CINDY	VINCENT	Jul. 05, '18	2 of 2