

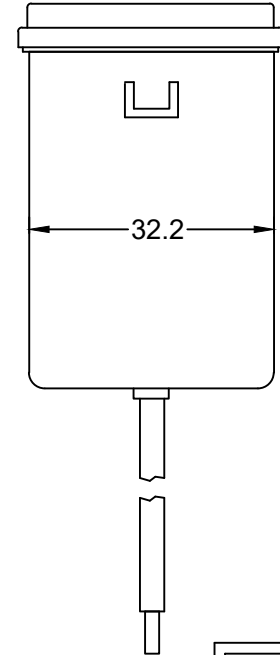
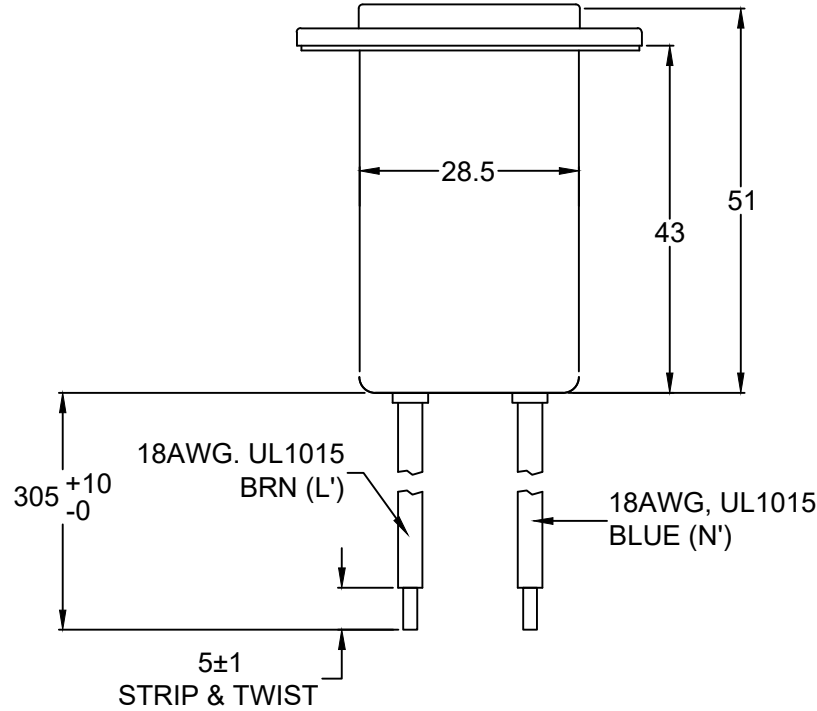
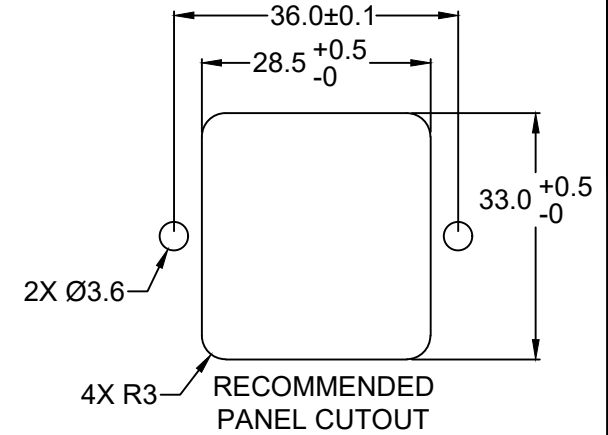
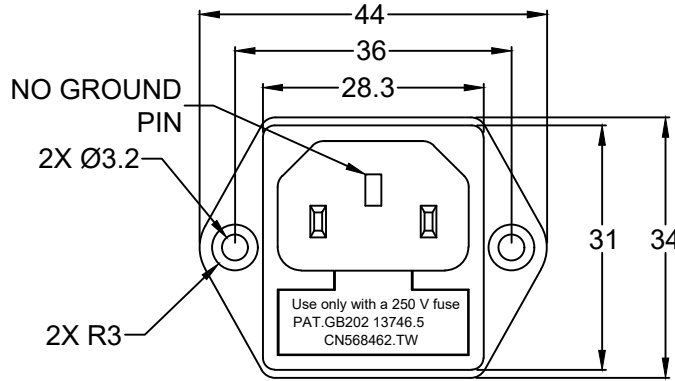
MATERIAL SPECIFICATIONS:
 Side fuse contacts: Brass, Nickel plated
 Bottom fuse cups: Beryllium Copper, Nickel plated

MECHANICAL SPECIFICATIONS:
 Durability: The fuse holder meets the requirements of IEC 60127-6 Clause 12.3.2 and Clause 14
 Fuse holder insertion force: 3.0Kg max.
 Fuse holder withdrawal force: 1.3Kg min.

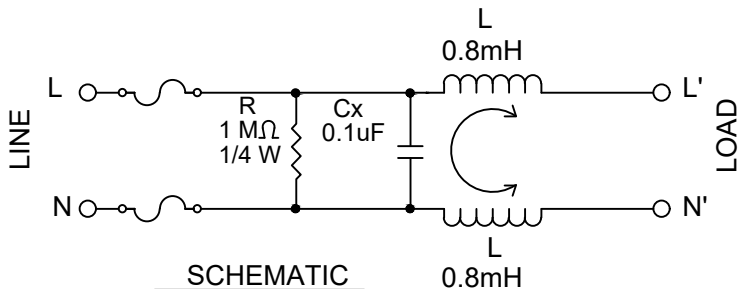
ELECTRICAL SPECIFICATIONS:
 Current rating: 6A RMS max.
 Voltage rating: 115/250 VAC 50/60 Hz
 Operating frequency: 50/60 Hz
 Leakage current: 2 uA max. at 115 VAC 60 Hz
 5 uA max. at 250 VAC 50 Hz
 each line to ground
 Hipot rating: (for one minute)
 Line to line: 1450VDC
 Line to ground: 2250VDC

Temperature range: -25°C to +85°C

APPROVALS:    



RoHS
COMPLIANT



TOLERANCE UNLESS OTHERWISE SPECIFIED	
X	± 1
X.X	± 0.4
X.XX	± 0.20
DRAWN BY	PB
CHECK BY	
APPR BY	
DATE:	6/7/11
DATE:	
DATE:	

Power Dynamics, Inc.		
Phone: 973 560-0019 Whippany, New Jersey Fax: 973 560-0076		
PART: MEDICAL GRADE FILTERED POWER ENTRY MODULE; IEC C18 CLASS II; 6 AMP; 2 FUSE; FLANGE MOUNT; 305mm LONG 18AWG WIRES		
PART #: HGN-365A06W-25-3MM1		SHEET 1 of 1
SIZE: A	ALL DIMENSIONS FOR REFERENCE ONLY DIMENSIONS ARE IN MILLIMETERS	
SCALE: NTS	REV:	

REVISIONS	CHANGE	CHK	CHK	APPR
REV	DATE			