

Product Data Sheet

653 Series

Features

- Gauge, vacuum and compound ranges through 0 psig to 10,000 psig
- For static and dynamic load measurements
- No internal sealing elements
- Stainless steel wetted parts
- Piezoresistive silicon chip
- Compact size
- CE compliant

Applications

- Hydraulics & pneumatics
- Automotive
- Pumps & compressors
- Refrigeration controls
- Transportation



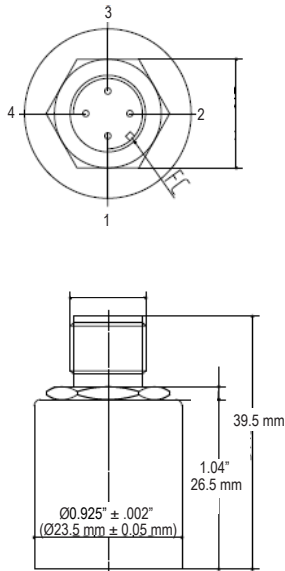
Specifications

Output signals	4 mA to 20 mA 2-wire, 0 Vdc to 5 Vdc 3-wire, 1 Vdc to 5 Vdc 3-wire, 0 Vdc to 10 Vdc 3 wire, 0.5 Vdc to 4.5 Vdc 3-wire (ratiometric)
Pressure ranges	Gauge, vacuum and compound ranges through 0 psig to 10,000 psig; other ranges available, consult factory
Accuracy	±0.5% full scale (BFSL) (IEC 61298-2)
Response time	≤1 ms
Service life	≥1,000,000 load cycles
Temperature ranges	Media -22 °F to 221 °F (-30 °C to 105 °C) Ambient -4 °F to 185 °F (-20 °C to 85 °C) Storage -40 °F to 257 °F (-40 °C to 125 °C)
Power requirement*	12 Vdc to 36 Vdc (4 mA to 20 mA, 2-wire) 12 Vdc to 36 Vdc (0 Vdc to 5 Vdc, 1 Vdc to 5 Vdc, 3-wire) 12 Vdc to 36 Vdc (0 Vdc to 10 Vdc, 3-wire) 5 Vdc ± 10% (0.5 Vdc to 4.5 Vdc ratiometric, 3-wire)
Proof pressure	≥2,000 psi: 1.2 times full scale; <2,000 psi: 2 times full scale
Measuring element	316 Stainless Steel
Connection	304 Stainless Steel
Housing material	304 Stainless Steel
Environmental rating	IP65 for Mini-Hirschmann (DIN EN 175301-803 form C) without mating connector and Hirschmann (DIN EN 175301-803 form A) without mating connector; IP67 for M12 x 1 (4-pin) connection
Electromagnetic rating	Immunity: IEC 61000-6-2 Radiation: IEC 61000-6-3
Electrical protection	Reverse polarity and short circuit protection
Shock resistance	Shock: 200g/1ms; IEC 60068-2-27 Free fall: 1m; IEC 60068-2-32
Vibration resistance	Sine curve, 20g, 25Hz~2kHz; IEC 60068-2-6 Random: 7.5grms, 5Hz~1kHz, IEC 60068-2-64
Weight	Approximately 3.4 oz.

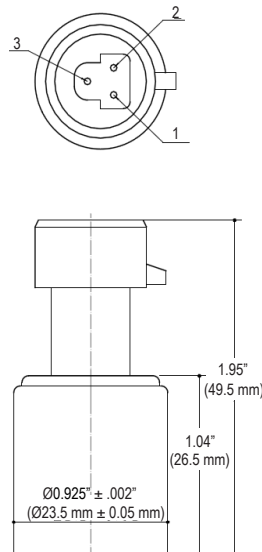
* Unregulated

Product Data Sheet

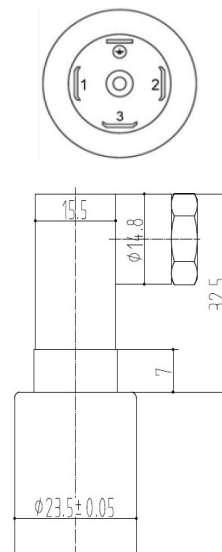
653 Series



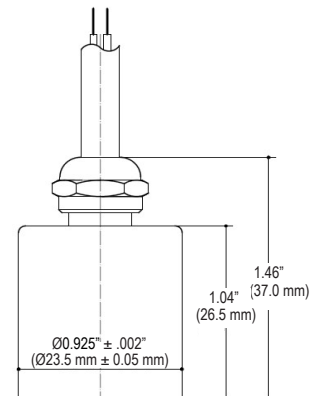
M12 X 1 (4-pin)



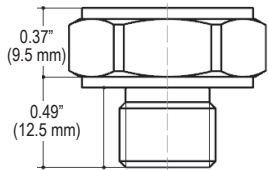
Metri-Pack 150 Series



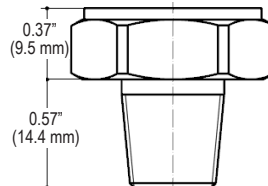
Mini-Hirschman (4-pin)



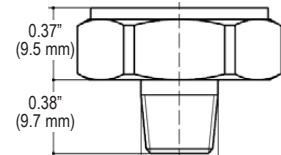
18" Integral cable



G1/4A Male



1/4" NPT Male



1/8" NPT Male

2-WIRE WIRING

Wiring	Cable	M12	Metri-Pack	Mini-Hirschmann
+ Supply	Red	1	1	1
+ Output	Green	2	2	2

3-WIRE WIRING

Wiring	Cable	M12	Metri-Pack	Mini-Hirschmann
+ Supply	Red	1	1	1
Common	Green	3	2	2
+ Output	Yellow	4	3	3