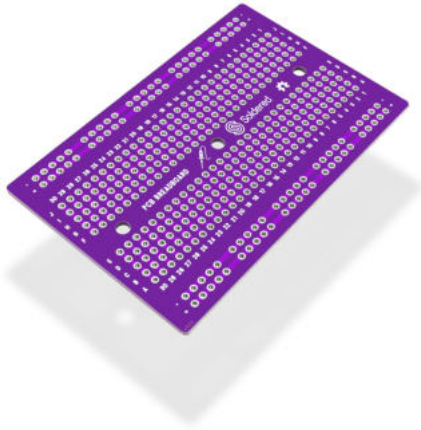


PCB BREADBOARD/PROTOBOARD



Weight 17 g

DESCRIPTION

This PCB is also a protoboard. It offers both the simplicity and the functionality of a breadboard. It is the same size as the modular half-size breadboard and has the same connections to pins. The board allows you to make the temporary circuit from the breadboard permanent.

Product usage tips:

The board has three mounting holes for secure placement on different surfaces.

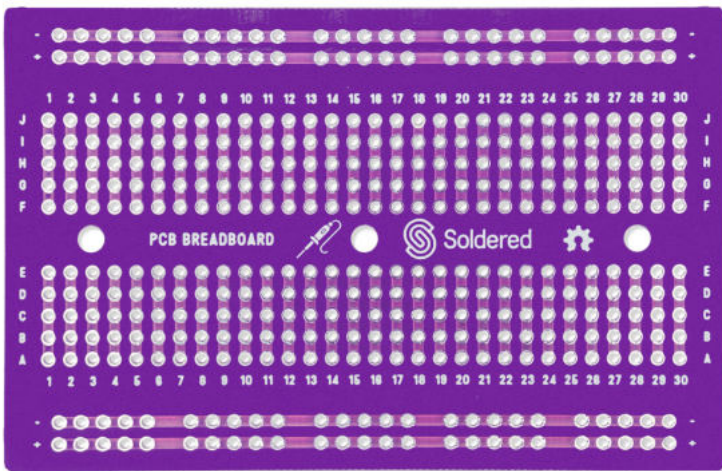
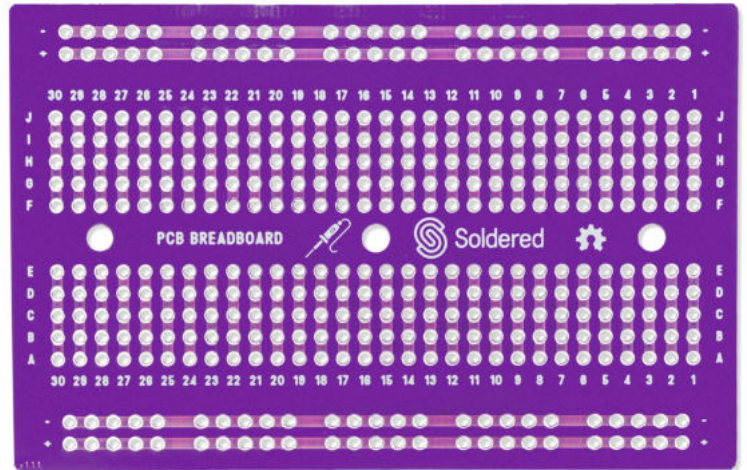
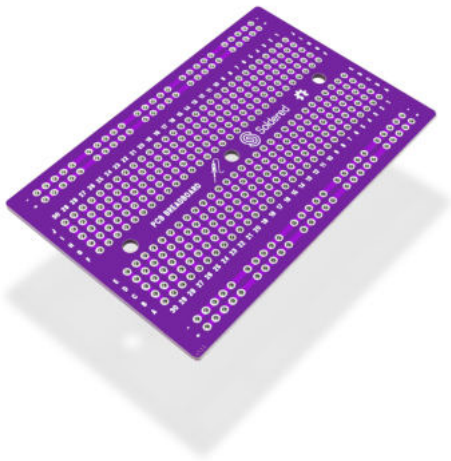
FEATURES

- Number of holes: 400
- Mounting holes: 3
- Dimensions: 84 x 54 mm / 3.3 x 2.1 inch

USEFUL LINKS

- [Open-Source Hardware files](#)
- [Pinout](#)

OTHER IMAGES



Weight

17 g