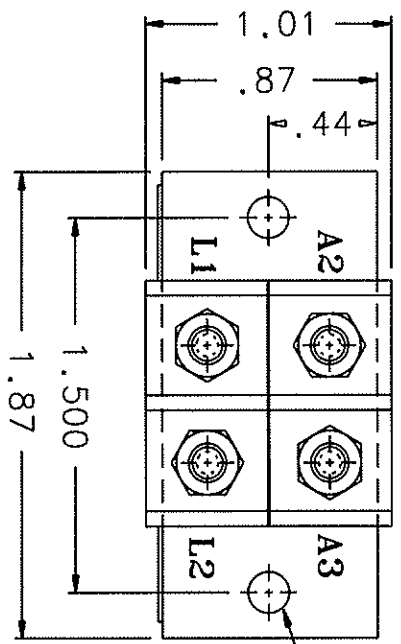
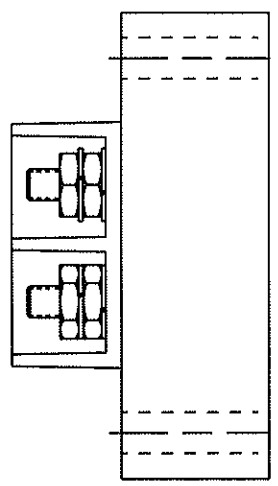
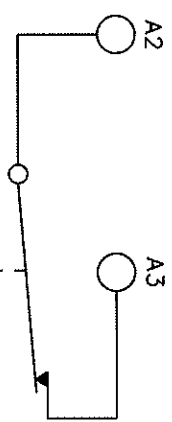


REVISIONS		RELEASED	REV.
REV.	DESCRIPTION	DATE	APPROVED
H	REDRAWN, *MAX* ADDED TO .59, FIND NO 5 ADDED	99/09/27	RS
J	*MAX* ADDED TO .76 & 1.03	00/02/01	RS

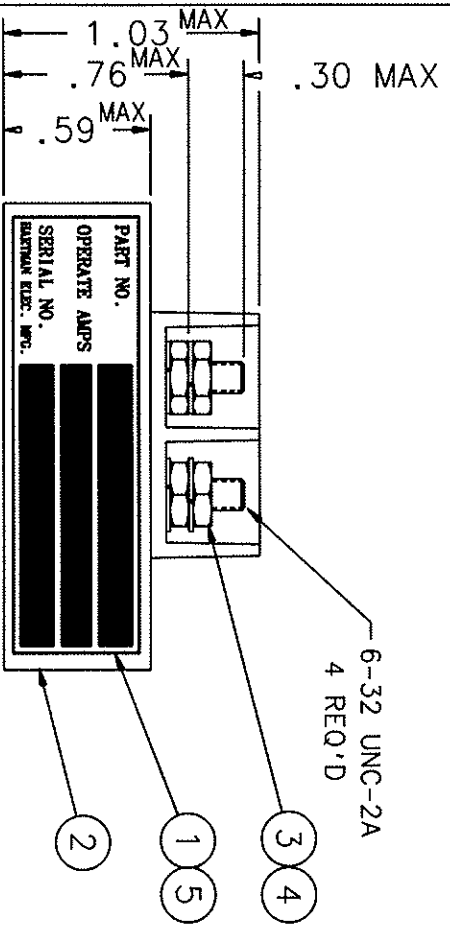


2 : 166 DIA. HOLE
2 MTG HOLES



OPERATING CHARACTERISTICS
 PICKUP 3 1/2 AMPS D.C. MAX.
 DROPOUT 1/2 AMP MIN
 CONTINUOUS 20 AMPS MAX

MAX. WEIGHT 1.25 OZ.
 TEMP -55°C TO +71°C
 VIBRATION 10 G's TO 500HZ
 ALTITUDE 50,000 FT. MAX.
 CONTACT RATING .25 AMP RES 28 VDC
 LAMP LOAD .08 AMP 28 VDC



4 6-32 UNC-2A REQ'D

PART NO. _____
 OPERATE AMPS _____
 SERIAL NO. _____
 HARTMAN Elec. MFG. _____

- 3 4
- 1 5
- 2

FIND NO	QTY REQ'D	PART OR IDENTIFYING NO	NOMENCLATURE OR DESCRIPTION	CAGE NO	DRAWING OR SPECIFICATION	MATERIAL OR NOTE
5	1	39529-024	OVERLAY			
4	4	51806-014	WASHER - LOCK No. 6 SPLIT			
3	4	50406-034	NUT 6-32 X 1/4 X 5/64 HEX.			
2	1	35190-010	RELAY ASSEMBLY - PRIMARY			
1	1	34246-001	PLATE - NAME			

UNLESS OTHERWISE SPECIFIED DIMENSIONS ARE IN INCHES TOLERANCES ARE: ±.06 ±.010 ±.1*

DR BY: RLS 00/02/25
 CHK BY: RLS 00/02/25
 ENGR: RLS 00/02/25
 MFG: 00/02/25

RELAY - CURRENT INDICATOR
 20 AMP CONTINUOUS

HARTMAN ELECTRICAL MANUFACTURING
 MASSFIELD, OHIO

SIZE: C CODE IDENT: 74063 DWG NO.: Q-50A
 SCALE: NONE SHEET: 093