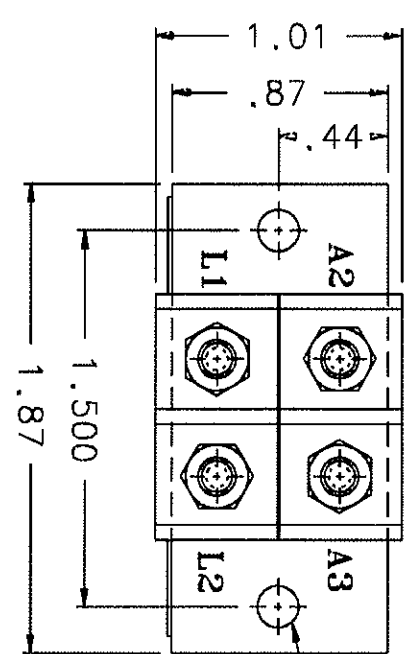
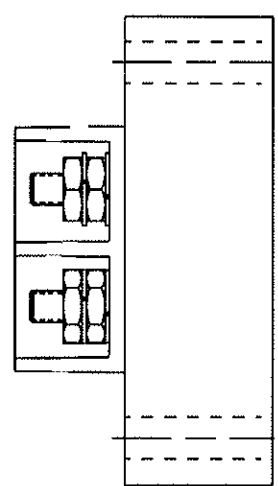
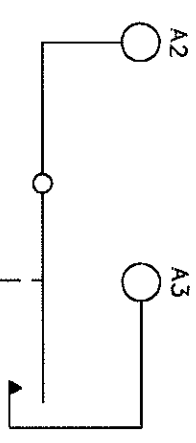


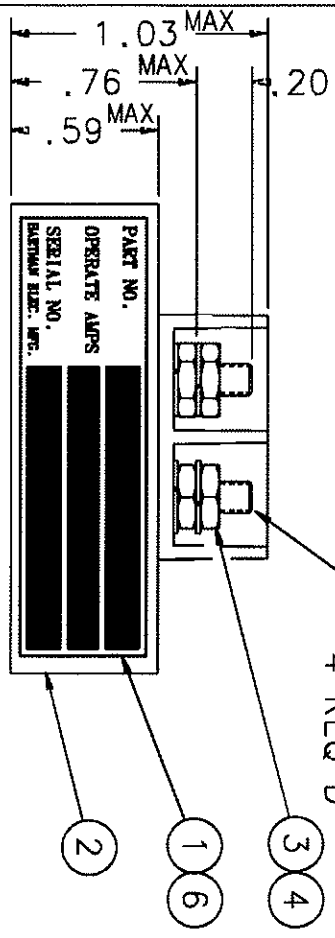
REVISIONS		RELEASED	
REV.	DESCRIPTION	DATE	APPROVED
C	REMOVED NOT RELEASED FOR PRODUCTION	99/03/17	RS
D	40463 *MAX* ADDED TO .59	99/09/27	RS
E	41497 *MAX* ADDED TO .76 & 1.03	00/02/01	RS
F	0633 CHANGED ALTITUDE TO 60,000 ADDED TYCO P/N	02/07/25	RS
G	0134-03 CHANGED ITEM 2 FROM -010 TO -030	03/12/16	CS



2 : 166 DIA. HOLE
MTG HOLES



OPERATING CHARACTERISTICS
 PICKUP 1.5 AMP MAX.
 DROPOUT LESS THAN 1 AMP
 CONTINUOUS 10 AMPS MAX.
 15 AMP FOR 3 SEC
 1.25 OZ.
 TEMP -55°C TO +71°C
 VIBRATION 10 G's TO 500HZ
 ALTITUDE 60,000 FT. MAX.
 CONTACT RATING 2 AMP RES. 28 VDC
 .08 AMP LAMP LOAD



4 6-32 UNC-2A
REQ'D

PART NO. _____
 OPERATE AMPS _____
 SERIAL NO. _____
 BATTERY REC. WTS. _____

QTY	PART OR IDENTIFYING NO	DESCRIPTION	NO. IN DRAWING OR SPECIFICATION	MATERIAL OR NOTE
6	1	39529-024	OVERLAY	
4	4	51806-014	WASHER - LOCK No.6 SPLIT	
3	4	50406-034	NUT 6-32 X 1/4 X 5/64 HEX.	
2	1	38496-030	RELAY ASSEMBLY - PRIMARY	
1	1	34246-001	PLATE - NAME	

UNLESS OTHERWISE SPECIFIED DIMENSIONS ARE IN INCHES
 2 PL. DEC./13 PL. DEC./ANGLE/ES
 TOLERANCES ON MATERIAL
 +.06 -.010 +.1*

DR BY RCB 03/12/16
 CHK BY CS 03/12/16
 ENGR JSC 09-01-08
 MFG M 04-21-14
 SIZE C
 CODE IDENT 74063
 SCALE 1/1 SHEET

Horizontal Division 175 N. Diamond Street, Waukegan, Ill. 60087
TYCO Electronics
 RELAY - CURRENT INDICATOR
 DWG NO. Q-50AB-2
 REF TYCO P/N 0-1616131-3