



2.4 GHz to 5.85 GHz Dual Band Antenna, Monopole,
90-degree angle, SMA Male Connector, 2.1 and 5.47 dBi Gain

Antennas Technical Data Sheet

PEANRBD1042

Features

- 2400-2500 / 5150-5850 MHz, 2.1/5.47 dBi Gain
- 90-degree SMA male connector
- Plug and play
- VSWR < 2.5:1
- Linear polarization
- Monopole antenna

Applications

- 2.4/5 GHz Wi-Fi and ISM applications
- WLAN applications
- IOT, Wireless audio/video systems
- Home automation
- Telemetry, remote monitoring
- Wireless data acquisition
- 802.11 a/b/g/n/ax/ac, wireless hotspots
- PtP and PtMP applications
- 5G bands: n53, n46
- 4G LTE bands: B252, B255, B46

Description

The Pasternack PEANRBD1042 WiFi antenna is an omni antenna operating from 2.4 GHz to 5.85 GHz with 2.1 and 5.47 dBi gain. Our high-quality rubber duck antenna transmits high power signals, increasing the signal strength, thus providing improved coverage, better broadcast control, and faster speed. The SMA male connector on this monopole antenna enables it to be used vertically, at a right angle, or at any angle in between.

This PEANRBD1042 WiFi antenna is 0.93 inches wide, 4.33 inches long, and 0.93 inches tall. Pasternack's omnidirectional antenna has a maximum input VSWR of 2.5:1, which results in the best power transfer and reduced losses. This omnidirectional antenna has a linear polarization, an SMA male connector, and an TPEE radome material. Our black WiFi antenna functions between -40 to 65 degrees C and has 50 Ohm impedance.

The Pasternack WiFi antenna is ideal for 2.4/5 GHz Wi-Fi and ISM applications, WLAN, Bluetooth, IOT, wireless audio/video systems, home automation, telemetry, remote monitoring, wireless data acquisition, 802.11 a/b/g/n/ax, wireless hotspots, PtP and PtMP applications. This monopole antenna has a waterproof design, a high power handling capacity, and IP66 ingress protection rating. The double band antenna has a gain of 2.1 dBi for the 2.4 GHz to 2.5 GHz frequency range and a gain of 5.47 dBi for the 5.15 GHz to 5.85 GHz frequency range.

This 2.1 dBi gain omni directional antenna is one of the thousands of products available from Pasternack's in-stock inventory with same business day shipment for local, domestic, and international orders. Make your online purchase for our high-quality antennas and take advantage of the same business day shipping services. For further information on similar products, our expert technical support and knowledgeable sales team can help you get the perfect 2.4 GHz to 5.85 GHz antenna for your requirement.

Configuration

Design	Rubber Duck
Band Type	Multi
Radiation Pattern	Omni Directional
Polarization	Linear
Connector Type	SMA Male

Electrical Specifications

Description	Minimum	Typical	Maximum	Units
Frequency Range	2,400		5,850	MHz
Input VSWR			2.5:1	

Click the following link (or enter part number in "SEARCH" on website) to obtain additional part information including price, inventory and certifications: [2.4 GHz to 5.85 GHz Dual Band Antenna, Monopole, 90-degree angle, SMA Male Connector, 2.1 and 5.47 dBi Gain PEANRBD1042](#)



2.4 GHz to 5.85 GHz Dual Band Antenna, Monopole,
90-degree angle, SMA Male Connector, 2.1 and 5.47 dBi Gain

Antennas Technical Data Sheet

PEANRBD1042

Impedance	50	Ohms
Input Power	10	Watts

Specifications by Band

Description	Band 1	Band 2	Band 3	Band 4	Band 5	Units
Range	2.4 to 2.5	5.15 to 5.85				GHz
Gain	2.1	5.47				dBi

Mechanical Specifications

Radome Material	TPEE
Size	
Overall Length	4.33 in [109.98 mm]
Width	0.93 in [23.62 mm]
Height	0.93 in [23.62 mm]
Weight	0.0242 lbs [10.98 g]

Environmental Specifications

Temperature	
Operating Range	-40 to +65 deg C
Storage Range	-40 to +80 deg C
Environment	
Ingress Protection	Waterproof IP66

Compliance Certifications (see [product page](#) for current document)

Plotted and Other Data

Notes:

Click the following link (or enter part number in "SEARCH" on website) to obtain additional part information including price, inventory and certifications: [2.4 GHz to 5.85 GHz Dual Band Antenna, Monopole, 90-degree angle, SMA Male Connector, 2.1 and 5.47 dBi Gain PEANRBD1042](#)



2.4 GHz to 5.85 GHz Dual Band Antenna, Monopole,
90-degree angle, SMA Male Connector, 2.1 and 5.47 dBi Gain

Antennas Technical Data Sheet

PEANRBD1042

2.4 GHz to 5.85 GHz Dual Band Antenna, Monopole, 90-degree angle, SMA Male Connector, 2.1 and 5.47 dBi Gain from Pasternack Enterprises has same day shipment for domestic and International orders. Our RF, microwave and millimeter wave products maintain a 99.4% availability and are part of the broadest selection in the industry.

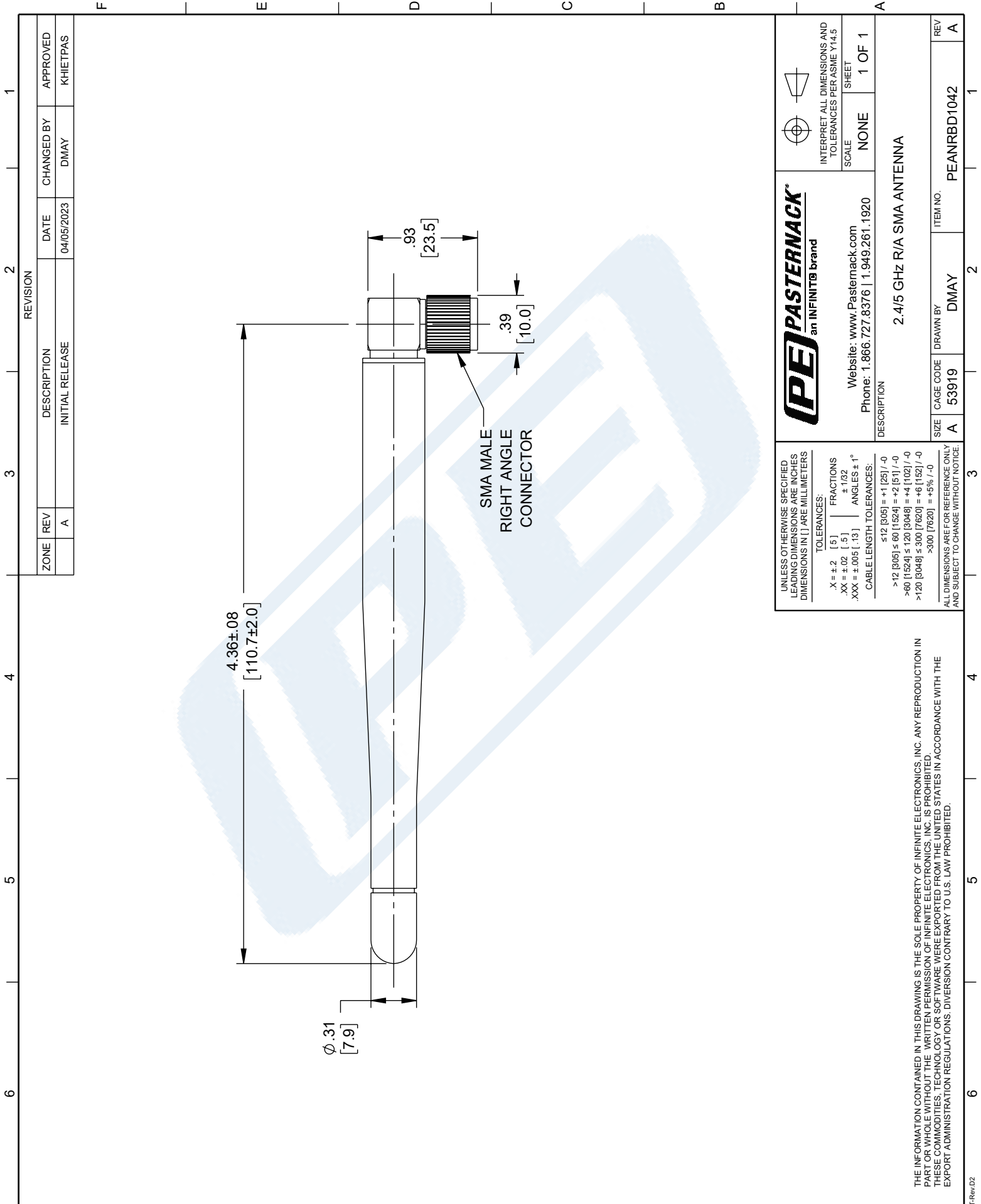
Click the following link (or enter part number in "SEARCH" on website) to obtain additional part information including price, inventory and certifications: [2.4 GHz to 5.85 GHz Dual Band Antenna, Monopole, 90-degree angle, SMA Male Connector, 2.1 and 5.47 dBi Gain PEANRBD1042](#)

URL:

The information contained in this document is accurate to the best of our knowledge and representative of the part described herein. It may be necessary to make modifications to the part and/or the documentation of the part, in order to implement improvements. Pasternack reserves the right to make such changes as required. Unless otherwise stated, all specifications are nominal. Pasternack does not make any representation or warranty regarding the suitability of the part described herein for any particular purpose, and Pasternack does not assume any liability arising out of the use of any part or documentation.

PEANRBD1042 CAD Drawing

2.4 GHz to 5.85 GHz Dual Band Antenna, Monopole, 90-degree angle,
SMA Male Connector, 2.1 and 5.47 dBi Gain



ZONE	REV	DESCRIPTION	DATE	CHANGED BY	APPROVED
	A	INITIAL RELEASE	04/05/2023	DMAY	KHIETPAS

<p>PASTERNACK an INFINIT® brand</p> <p>Website: www.Pasternack.com Phone: 1.866.727.8376 1.949.261.1920</p>	<p>INTERPRET ALL DIMENSIONS AND TOLERANCES PER ASME Y14.5</p> <p>SCALE: NONE</p> <p>SHEET: 1 OF 1</p>
	<p>DESCRIPTION: 2.4/5 GHz R/A SMA ANTENNA</p>
<p>SIZE: A</p> <p>CAGE CODE: 53919</p> <p>DRAWN BY: DMAY</p> <p>ITEM NO.: PEANRBD1042</p>	<p>REV: A</p>

UNLESS OTHERWISE SPECIFIED LEADING DIMENSIONS ARE INCHES DIMENSIONS IN [] ARE MILLIMETERS

TOLERANCES:

.X = ±.2	[.5]	FRACTIONS	±.1032
.XX = ±.02	[.5]	ANGLES ± 1°	
.XXX = ±.005	[.13]	CABLE LENGTH TOLERANCES:	

≤12 [305] = +1 [25] / -0
 >12 [305] ≤ 60 [1524] = +2 [51] / -0
 >60 [1524] ≤ 120 [3048] = +4 [102] / -0
 >120 [3048] ≤ 300 [7620] = +6 [152] / -0
 >300 [7620] = +5% / -0

ALL DIMENSIONS ARE FOR REFERENCE ONLY AND SUBJECT TO CHANGE WITHOUT NOTICE.

THE INFORMATION CONTAINED IN THIS DRAWING IS THE SOLE PROPERTY OF INFINITE ELECTRONICS, INC. ANY REPRODUCTION IN PART OR WHOLE WITHOUT THE WRITTEN PERMISSION OF INFINITE ELECTRONICS, INC. IS PROHIBITED. THESE COMMODITIES, TECHNOLOGY OR SOFTWARE WERE EXPORTED FROM THE UNITED STATES IN ACCORDANCE WITH THE EXPORT ADMINISTRATION REGULATIONS. DIVERSION CONTRARY TO U.S. LAW PROHIBITED.