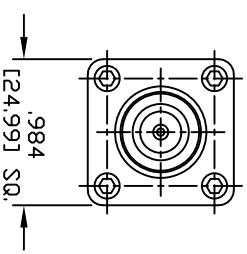
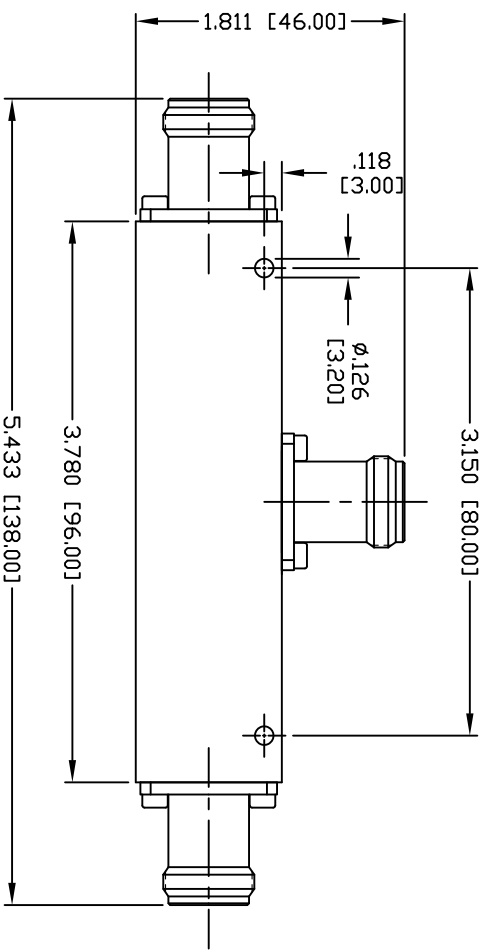


DESIGNED FOR  
PUBLIC SAFETY DAS

PART NO.	<b>RRPT-NF-PS10</b>		
REV	DESCRIPTION	DWN	DATE
-	ENGINEERING RELEASE	CZS	02/11/21
			APPROVED
			JDMc



SPECIFICATIONS:

IMPEDANCE: 50 Ohms  
 FREQUENCY BAND: 138-960 MHz  
 POWER: 200 WATT  
 INSERTION LOSS:  
 -11.0±0.8 @ 137-200MHZ  
 -10.7±0.7 @ 200-250MHZ  
 -10.3±0.7 @ 250-380MHZ  
 -10.1±0.7 @ 380-520MHZ  
 -9.9±0.5 @ 698-960MHZ  
 NOMINAL RATIO: 10:1/10dB  
 OUTPUT SPLIT: -0.9/-10.4  
 VSWR: 1.20 @ 147-380  
 VSWR: 1.20 @ 380-960  
 OPERATION TEMPERATURE: -35°C ~ +75°C  
 HUMIDITY: 5-95%  
 APPLICATION: INDOOR/OUTDOOR  
 REGULATORY COMPLIANCE: IP65  
 COLOR: RED

CUSTOMER OUTLINE DRAWING	
ALL DIMENSIONS ARE REFERENCE ONLY	
UNLESS OTHERWISE SPECIFIED: DIMENSIONS ARE IN INCHES AND [MILLIMETERS]	
DRAWN	02/11/21
C. ZUÑIGA	
CHECKED	
ORD DRAWN	02/11/21
C. ZUÑIGA	

**ROHS COMPLIANT**

PROPRIETARY AND CONFIDENTIAL  
 THIS DRAWING CONTAINS  
 INFORMATION PROPRIETARY TO  
 RF INDUSTRIES, ANY  
 UNAUTHORIZED USE OF THIS  
 DRAWING IS EXPRESSLY  
 PROHIBITED WITHOUT WRITTEN  
 PERMISSION FROM RF  
 INDUSTRIES. ANY VIOLATION IS  
 PUNISHABLE UNDER U.S.  
 COPYRIGHT LAWS.

**RF Connectors**  
 DIVISION OF RF INDUSTRIES, LTD.  
 7610 MIRAMAR RD.  
 SAN DIEGO, CA 92126  
 (858) 549-6340  
 (858) 549-6345 FAX

**10 dB POWER TAPPER**  
 N FEMALE - 138-960 MHz

SIZE	CABLE GROUP	DWG NO.	REVISION
A		<b>RRPT-NF-PS10</b>	—

SCALE: NTS      ENGINEERING ID: 000000      SHEET 1 OF 1