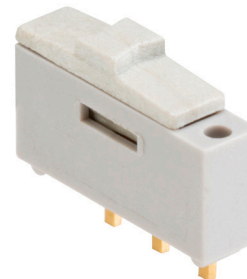


**MODEL:** MSS-102545-14A-V-SMT | **DESCRIPTION:** MINI SLIDE SWITCH

**FEATURES**

- gray raised actuator
- gray body
- vertical surface mount


**SPECIFICATIONS**

| parameter             | conditions/description                                    | min    | typ             | max        | units            |
|-----------------------|---|--------|-----------------|------------|------------------|
| rated voltage         |   |        |                 | 12<br>24   | Vdc<br>Vdc       |
| rated current         | at 12 Vdc<br>at 24 Vdc                                    | 1<br>1 |                 | 500<br>300 | mA<br>mA         |
| withstanding voltage  | for 1 minute  |        | 500             |            | Vac              |
| contact resistance    |   |        |                 | 30         | mΩ               |
| insulation resistance | at 500 Vdc  | 10,000 |                 |            | MΩ               |
| operating force       |   | 100    | 250             | 400        | gf               |
| actuator travel       |   |        | 1.6             |            | mm               |
| operating temperature |   | -40    |                 | 85         | °C               |
| storage temperature   |   | -40    |                 | 85         | °C               |
| life                  | with load<br>without load                                 |        | 2,000<br>10,000 |            | cycles<br>cycles |
| flammability rating   | UL94V-0   |        |                 |            |                  |
| RoHS                  | yes   |        |                 |            |                  |
| packaging             | bulk, 200 pcs per bag<br>tape and reel, 1500 pcs per reel |        |                 |            |                  |

**PART NUMBER KEY**

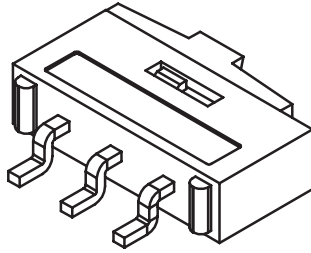
**MSS - 102545 - 14A - V - SMT - XX**

Base Number

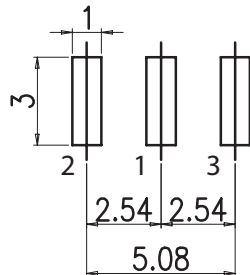
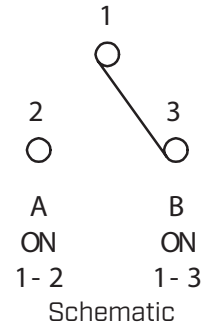
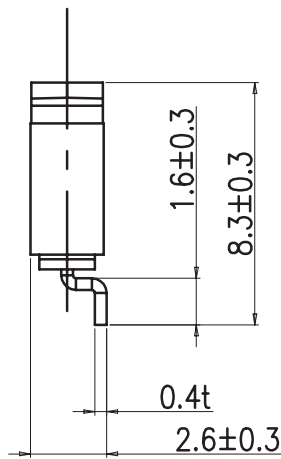
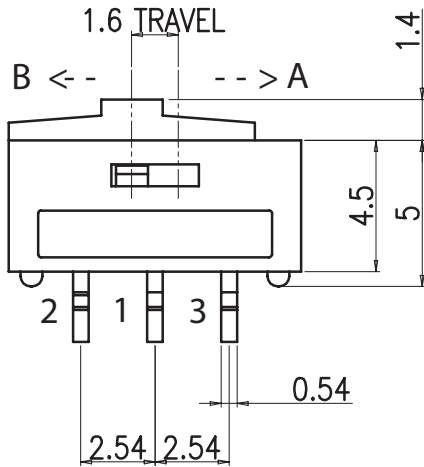
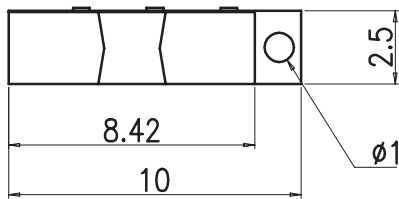
Packaging:  
"blank" = bag  
TR = tape and reel

## MECHANICAL DRAWING

units: mm  
 tolerance:  $\pm 0.3$  mm  
 unless otherwise noted



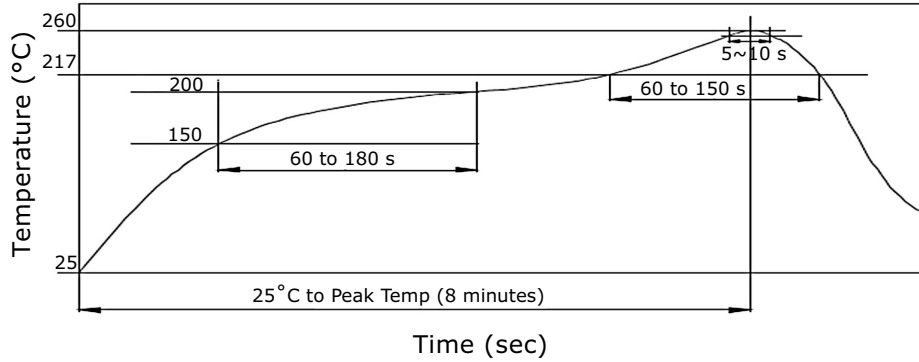
| ITEM | DESCRIPTION | MATERIAL       | PLATING/COLOR |
|------|-------------|----------------|---------------|
| 1    | actuator    | PA66 (UL94V-0) | gray          |
| 2    | housing     | PA66 (UL94V-0) | gray          |
| 3    | terminals   | nickel         | gold          |



Recommended PCB Layout  
 Top View

## SOLDERABILITY

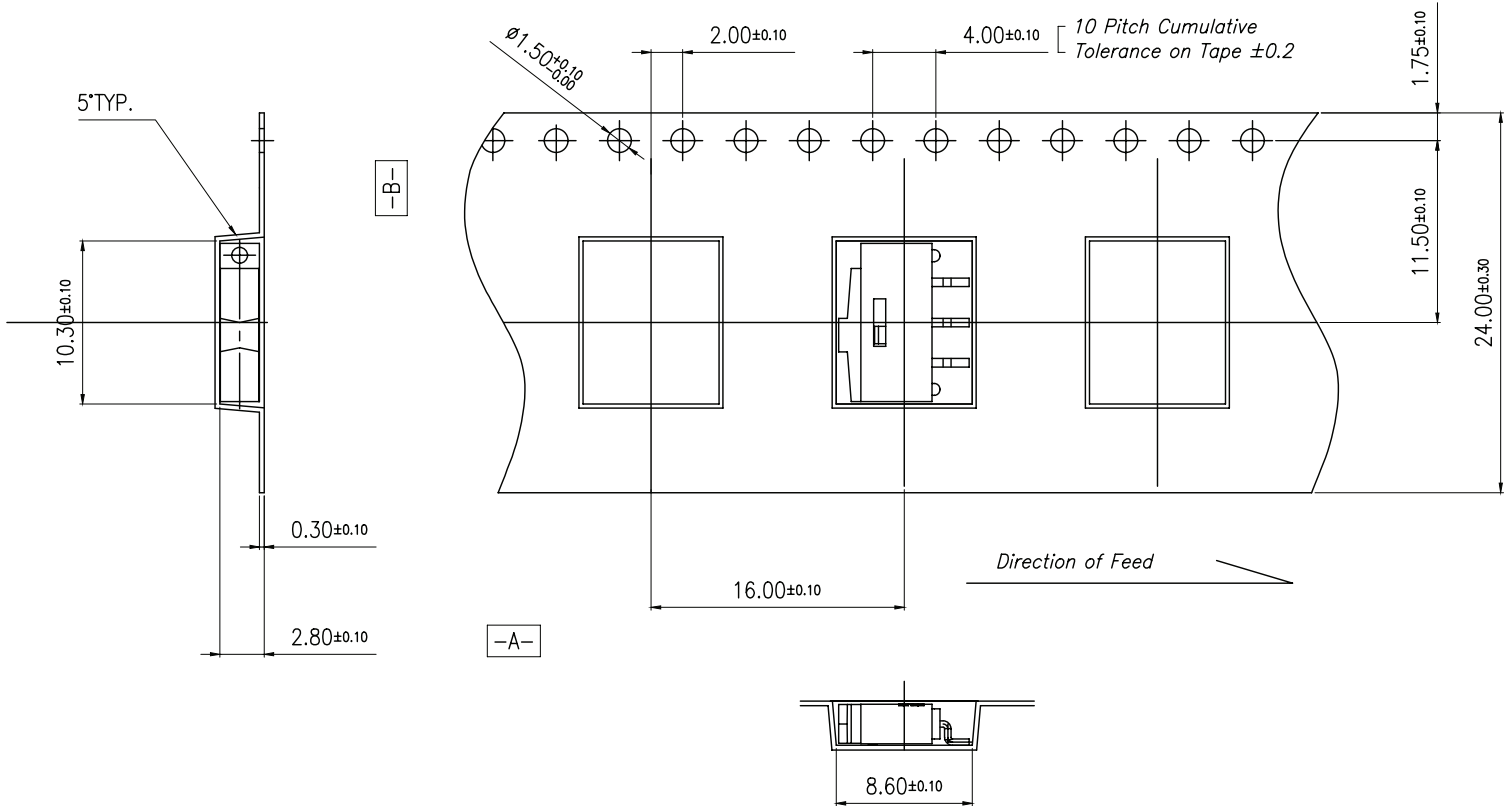
| parameter        | conditions/description | min | typ | max | units |
|------------------|------------------------|-----|-----|-----|-------|
| reflow soldering | see graph below        |     |     | 260 | °C    |



## PACKAGING (TAPE & REEL)

units: mm

Reel Size: Ø330 mm  
Reel QTY: 1,500 pcs per reel



## REVISION HISTORY

| rev. | description                          | date       |
|------|--------------------------------------|------------|
| 1.0  | initial release                      | 02/19/2021 |
| 1.01 | logo, datasheet style update         | 08/05/2022 |
| 1.02 | updated datasheet                    | 07/28/2023 |
| 1.03 | added tape and reel packaging option | 10/31/2023 |

The revision history provided is for informational purposes only and is believed to be accurate.



CUI Devices offers a one (1) year limited warranty. Complete warranty information is listed on our website.

CUI Devices reserves the right to make changes to the product at any time without notice. Information provided by CUI Devices is believed to be accurate and reliable. However, no responsibility is assumed by CUI Devices for its use, nor for any infringements of patents or other rights of third parties which may result from its use.

CUI Devices products are not authorized or warranted for use as critical components in equipment that requires an extremely high level of reliability. A critical component is any component of a life support device or system whose failure to perform can be reasonably expected to cause the failure of the life support device or system, or to affect its safety or effectiveness.

[cuidevices.com](http://cuidevices.com)